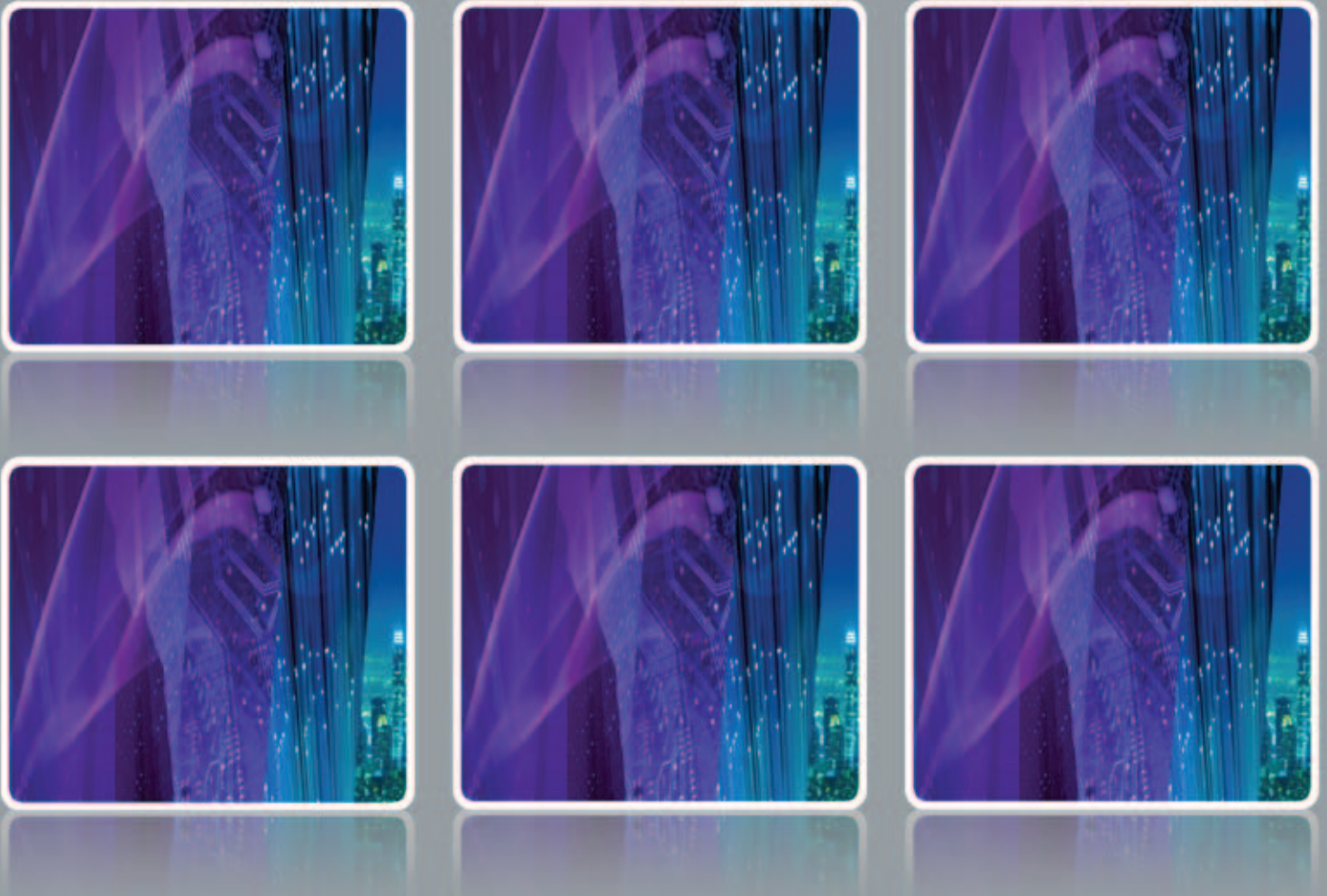




Power Systems Technical Symposium

System z Technical Symposium



Conference Guide

Orlando, Florida
April 27 – 29, 2011



BROCADE



THE NETWORK OF TOMORROW, TODAY

Go Beyond the Ordinary with Brocade

Throughout IBM Power Systems and System z Technical Symposia, visit Brocade booth #40 and:

- Discover a Better Way to Connect Your Mainframe
- Unleash the performance of the zEnterprise® 196 and High Performance FICON (zHPF)
- Learn about end-to-end management of data center fabrics
- Gain perspective on the entire suite of IBM and Brocade Systems Networking and Systems Storage solutions

Learn more at www.brocade.com



IBM Storage Media

SETTING THE STANDARD IN STORAGE TECHNOLOGY

SUPERIOR MEDIA QUALITY.

**MORE THAN 50 YEARS
OF TAPE STORAGE INNOVATION.**

**A HISTORY OF HIGH QUALITY
HIGH-RELIABILITY
GREEN TAPE TECHNOLOGY.**



www.ibm.com/systems/storage/media

IBM Storage Media

SETTING THE STANDARD IN STORAGE TECHNOLOGY



**ENTERPRISE CLASS
RELIABILITY WITH UP TO 3 TB OF CAPACITY.**

**ENCRYPTION ENABLED TO KEEP
DATA SAFE AND SECURE.**

**SUPERIOR MEDIA QUALITY THROUGH
CONTINUOUS INNOVATION OVER 50+ YEARS.**

**INCREASE ARCHIVE CAPACITY
WITHOUT INCREASING POWER COSTS.**



www.ibm.com/systems/storage/media

Table of Contents

General Information	6
Opening General Session — Keynote Speaker	8
Power Systems Agenda Grid	10
Power Systems Track Agenda & Abstracts	21
System z Agenda Grid	40
System z Track Agenda & Abstracts	47
Vendor Session Agenda & Abstracts	60
Sponsors and Solution Center Exhibit Guide	64
Agenda-at-a-Glance	70
Conference Facility Map	71



© International Business Machines Corporation 2011

International Business Machines Corporation
Route 100
Somers, NY 10589

IBM, the IBM logo and ibm.com, Smarter Planet and the planet icon are trademarks of International Business Machines Corporation, registered in many jurisdictions worldwide. Other product and service names might be trademarks of IBM or other companies.

A current list of IBM trademarks is available on the Web at www.ibm.com/legal/copytrade.shtml

Produced in the United States of America
04-11
All Rights Reserved



Power Systems and System z Technical Symposia

Welcome to Orlando and the second annual IBM STG Power Systems Technical Symposium and the inaugural IBM System z Technical Symposium. We're delighted you are here and we are committed to making this year's event a valuable educational experience for you.

If this is your first time attending an IBM Technical Symposium, let us be the first to welcome you to this unique educational experience. If you are an alumnus of our previous Technical Universities, you will see many similarities to our Power and System z Technical Universities. I hope you will find this symposium to be an outstanding addition to the portfolio of events we offer.

The 2011 Power Symposium will focus on training related to the recent POWER announcement and the potential impact on your data center. There will be several sessions covering new and upcoming hardware and software announcements, VIO Server enhancements and the new HMC.

At the System z Technical Symposium, you can update your skills with training on the latest releases of z/OS, z/VM and Linux for System z. There will also be a comprehensive track on zEnterprise, System z Technical Strategies and Architectures, DB2 for z/OS, BI, and the IBM Smart Analytics Optimizer. With approximately 150 technical sessions and hands on labs between the two symposia, you will find subjects of interest to fill every learning opportunity.

Be sure to attend the General Session with key updates from IBM executives. We are extremely pleased to have Tom Rosamilia, General Manager Power and System z, IBM Systems and Technology Group and Jeff Jonas, Chief Scientist, IBM Entity Analytics.

Certification Testing will be offered at this event. IBM Certification exams are offered at a substantial discount off the regular price and there is no pre-registration required. The Testing Center is located in Pocket Lake and will be conveniently open during the conference.

To stay connected while you are in Orlando, we offer wireless connectivity in many areas of the Conference center. If you brought your laptop, stop by the Cyber Café, located in Lake Lucerne, and let us help you get connected. There are a few public laptops available for your use this week in the Cyber Café.

On behalf of the IBM Systems Lab Services and Training team, I thank you for your time and attendance. We value your business and are dedicated to providing you with the very best in education, training and skills development.

If any of the IBM staff can be of assistance to you in any way, please do not hesitate to ask. If you would like to send any feedback regarding the conference or are interested in participating as a speaker at future events, please feel free to contact us directly.

Conference Feedback:
Email: mmaddy@us.ibm.com

Speaker Interest:
Email: abderra@uk.ibm.com
Email: grander@us.ibm.com

Enjoy the Conference and your stay in Orlando!

Marlin

Marlin Maddy
Worldwide Technical Events Executive
IBM Systems Agenda Delivery

Alex

Alexander Abderrazag MIET, FIIT, MBCS CITP
Program Mgr for WW Technical Power Conferences
IBM Systems Agenda Delivery

Glenn

Glenn Anderson
z/OS Instructor &
WW System z Conf Content Manager
IBM Systems Agenda Delivery

General Information

Hotel Information

Hilton Orlando
6001 Destination Parkway
Orlando, FL 32819
Telephone: 407.313.8400
Fax: 407.313.8484

Hotel check-in time is 4:00 PM and checkout time is 11:00 AM. Late checkout requests are based on availability and at the discretion of the hotel. Requests should be directed to the hotel front desk.

Conference Registration

Registration and Information is located on the lobby level of the hotel. There will be a message board available during normal registration hours. It is highly recommended that callers leave non urgent messages for conference participants on their hotel room voicemail. Hours of operation for Registration/Information are as follows:

Tuesday 3:00 p.m. – 7:00 p.m.
Wednesday 7:30 a.m. – 5:30 p.m.
Thursday 7:30 a.m. – 5:30 p.m.
Friday 7:30 a.m. – 2:30 p.m.

Conference Name Badge

Your conference name badge must be worn and visible for admittance to all scheduled sessions, meal functions and evening receptions.

Conference Schedule

The conference begins with breakfast at 7:00 AM Wednesday morning in Orlando Ballroom I & II. Please join us at 8:30 AM for our Opening General Session and keynote address in Orlando Ballroom III – VI. Individual sessions will run daily and, in some cases, are repeated. Please review the conference guide in your registration materials.

Please check the conference message board at the registration desk for any session changes that may occur. The conference concludes at 2:15 PM on Friday.

Solution Center and Exhibitor Presentations

Attendees are invited to meet with the exhibitors during scheduled Solution Center hours and exhibitor presentation sessions. Detailed information on the participating exhibitors and sponsors, Solution Center hours of operation, receptions and exhibitor sessions, and presentation abstracts can be found in the Conference Guide.

Conference Materials

In support of our commitment to “Going Green,” we will no longer be providing hardcopy handouts of conference presentations. We will be providing attendees with a memory key on-site that can be used to download presentations.

Certification Testing

Certification tests will be offered daily and scheduled time slots will be on a first-come, first served basis. The Certification Testing Center is located in Pocket Lake on the lobby level of the hotel. There is a fee for Certification exams, with payment being accepted via credit card only. See the flyer provided in your registration materials for additional information.

Cyber Café

Come to Lake Lucerne, located on the lobby level, for your high speed access needs! This room will be open daily during the hours published in the agenda. Bring your laptop along, or use one of the Internet accessible systems available in the Cyber Cafe.

Conference Session & Overall Evaluation Forms

Session evaluation forms will be available for your completion at each session attended. Please complete the form and leave it in the basket located in the rear of each breakout room. You will receive an Overall Conference Evaluation form on Thursday. Please complete this form before the conference concludes and drop it off at the registration desk. Your feedback is important to us - and we thank you in advance for your input!

Meal Functions

Breakfast and lunch will be served Wednesday through Friday, with daily refreshment breaks. Please see the agenda for times and locations of all meal functions and refreshment breaks. Meals and refreshment breaks are for registered conference participants only. There is no official spouse or guest meal program for this conference; however, the hotel concierge can assist you in providing details on local restaurants and attractions.

Attire

Business casual attire is appropriate for all conference participants, exhibitors and speakers. Please bring a sweater or light jacket for your personal comfort as meeting room temperatures can vary.

General Information

Expenses

You are responsible for your own travel, lodging and conference charges. Lodging and incidentals charged to your room are to be paid to the hotel upon check-out. The conference enrollment fee covers registration, conference materials, and admission to all scheduled sessions and meals served during the conference.

If you need a receipt for your registration fee, please call 1-800-IBM-TEACH during business hours.

Cell Phones, Pagers and Electronic Devices

Please turn off all cell phones, pagers or other electronic devices when you attend sessions as they are very distracting to both the speaker and the other attendees. We appreciate your cooperation.

Emergency Care

For any emergency at your hotel, dial 0 for an operator who will put you in touch with hotel security.

Lost & Found

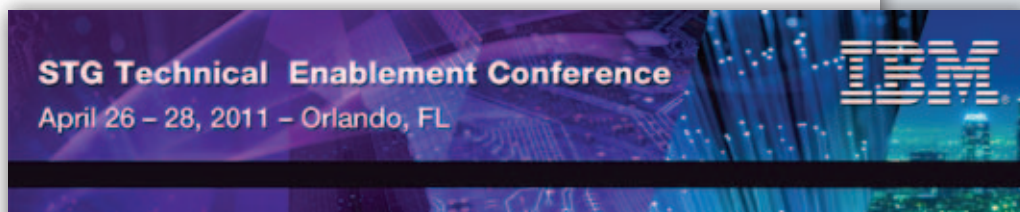
Any items found by conference staff or hotel personnel will be turned over to hotel security. Attendees should contact hotel security for any items lost during the conference.

Hotel Checkout and Luggage Storage

You may checkout electronically from your room or in the hotel lobby. Checkout time is 11:00 AM. For safety and security reasons, please check all luggage with the hotel bell desk and do not bring it to the sessions.

The banners below match the signs used at this week's IBM events

- A white line is on the signs for Power Systems and System z Technical Symposia attendees
- A black line is on the signs for STG Technical Enablement Conference attendees
- There is no line on signs that apply to all IBM Event attendees.



Opening General Session – Keynote Speakers



Jeff Jonas

*Chief Scientist, IBM Entity Analytics
IBM Distinguished Engineer*

Jeff Jonas is Chief Scientist, IBM Entity Analytics Group and an IBM Distinguished Engineer. The IBM Entity Analytics Group was formed based on technologies developed by Systems Research & Development (SRD), founded by Jonas in 1984, and acquired by IBM in January, 2005.

Jonas designs next generation technology that helps organizations better leverage their enterprise-wide information assets. With particular interest in real-time “sensemaking” these innovative systems fundamentally improve enterprise intelligence which makes organizations smarter, more efficient and highly competitive.

Jonas’ work has received wide media attention from the Wall Street Journal, The Washington Post, to Fortune Magazine, MSNBC and National Public Radio. He is a member of the Markle Foundation Task Force on National Security, a Senior Associate at the Center for Strategic and International Studies, a member of the EPIC advisory board and a board member of the US Geospatial Intelligence Foundation.

Jonas blogs on information management, national security, and privacy and periodically testifies on privacy in such venues as the Department of Homeland Security’s Data Privacy and Integrity Advisory Committee, and other federally convened commissions.

Jeff Jonas blogs at: <http://jeffjonas.typepad.com>

Opening General Session – Keynote Speakers



Tom Rosamilia

*General Manager, Power and z Systems
IBM Systems & Technology Group*

Tom Rosamilia is the General Manager of Power and z Systems for IBM's Systems & Technology Group. He is responsible for all facets of IBM's Power Systems and System z businesses including strategy, marketing, sales, operations, technology development and overall financial performance. He led a similar mission for System z prior to his current role.

Prior to joining STG, Mr. Rosamilia was also the General Manager of IBM's WebSphere Software division, where he led an organization across software development, marketing, services, and sales professionals spanning more than 34 locations worldwide. He was responsible for IBM's WebSphere portfolio and other strategic middleware technologies, including Web application servers, transaction and messaging systems, business integration technology, e-commerce servers, and industry-oriented middleware solutions.

He previously held several other executive positions within the IBM Software Group, including: Vice President, WebSphere, responsible for product management and development of WebSphere and Industry Solutions portfolios, VP of Development for Data Management (including the DB2 Universal Database, Data Management Tools, IMS, Business Intelligence Solutions, and Informix portfolios) and IBM Silicon Valley Laboratory General Manager.

Power Systems Technical Symposium Agenda

Wednesday, April 27, 2011

7:00 AM – 8:30 AM

Breakfast — Orlando Ballroom I & II ★ Sponsored by Emulex

7:30 AM – 5:30 PM

Registration/Information

8:30 AM – 10:00 AM

General Session — Keynote — Orlando Ballroom III – VI
Jeff Jonas — Chief Scientist, IBM Entity Analytics — IBM Distinguished Engineer
Tom Rosamilia — General Manager, Power and z Systems — IBM Systems & Technology Group

10:00 AM – 10:30 AM

Coffee Break ★ Sponsored by Juniper Networks and Novell, Inc.

10:00 AM – 5:30 PM

Cyber Café — Lake Lucerne

10:00 AM – 7:00 PM

Certification Testing

10:30 AM – 11:45 AM

Lake George B	Lake Down A	Lake Down B	Lake Concord A
pWW60 Power Power Systems Update <i>Pat O'Rourke</i>	pWW31 AIX R: Thu 10:30 AIX Trends and Directions <i>Jay Kruemcke</i>	pWW78 IBM i R: Thu 9:00 IBM i Trends and Directions <i>Steve Will</i>	pHY79 AIX PowerHA SystemMirror for AIX: Offering & strategy <i>Steven Finnes</i>
Lake George A	Lake Monroe B	Lake Monroe A	Lake Nona A (Lab)
pSS14 AIX R: Thu 10:30 IBM & SAP & Oracle Optimal Filesystem Layout <i>Damir Rubic</i>	pSS19 AIX R: Thu 10:30 Powering up analytics with the IBM Smart Analytics System <i>Doug Mack</i>	pVN65 AIX R: Thu 4:15 NPIV - Power Implementation in a Live Partition Mobility (LPM) environment <i>Richard Bleistein</i>	pVN84 AIX R: Thu 4:15 Live Partition Mobility <i>Ted Sullivan</i>

11:45 AM – 1:00 PM

Lunch — Orlando Ballroom I & II ★ Sponsored by Brocade

11:45 AM – 1:00 PM

Solution Center Open — Florida Ballroom

1:15 PM – 2:15 PM

Lake George B	Lake Down A	Lake Down B	Lake Concord A
pWW49 Power R: Thu 9:00 Power 710/720/730/740 DeepDive <i>Mark Olson</i>	pWW87 IBM i R: Thu 9:00 IBM i 6.1 and 7.1 Technical Overview <i>Tracy Smith</i>	pDT02 Power R: Thu 10:30 Application Development on Power <i>Alison Butterill</i>	pHY13 IBM i R: Thu 10:30 PowerHA in Action <i>Chuck Stupca/Steve Finnes</i>
Lake George A	Lake Monroe B	Lake Monroe A	Lake Nona A (Lab)
pAN90 AIX R: Thu 1:00 Demystifying the AIX Kernel <i>Vandana Mallempati</i>	pHY18 AIX R: Thu 1:00 Power up your OLTP applications with DB2 pureScale <i>Doug Mack</i>	pVN27 AIX R: Fri 10:30 Partition Suspend/Resume and other new features with VIO 2.2 Fixpack 24 <i>James Nash</i>	pSE01 AIX R: Thu 1:00 XIV hands-on lab: Fibre Channel Configuration (in-conjunction with AIX hosts). <i>Alex Abderrazag</i>

2:15 PM – 2:30 PM

Break

Power Systems Tracks and Page Reference for Abstracts

pAN: Administration85	pSY: Security97	pVN: Virtualization98
pHY: Availability24	pSS: Solutions93	pWW: What's New100
pDT: Development86	pSE: Storage91	__ : Vendor Sessions60
pPE: Performance90	pST: Systems Management . . .95	

Systems

AIX
IBM i
Linux
Net
Power
Storage

Power Systems Technical Symposium Agenda

Lake Concord B	Lake Hart A	Lake Hart B	S331B	S331C
<p>pWW35 Linux R: Thu 2:30</p> <p>Linux for Power Trends and Directions <i>Jeff Scheel</i></p>	<p>pWW34 Net</p> <p>IBM System Networking Strategy - A Smarter Network for a Smarter Planet <i>Jeff Currier</i></p>	<p>pSE83 Storage R: Thu 4:15</p> <p>Storage Trends and Directors for Power Systems <i>Susan Schreitmuller/Brian Sherman</i></p>	<p>eVR01 R: Thu 9:00</p> <p>Create new SAN and SAN extension infrastructure changes with z196 zEnterprise server and DS8800 <i>Brian Larsen, (Brocade)</i></p>	<p>eVR03</p> <p>VMware vCloud Director Technical Overview <i>Eric Hardcastle (VMware)</i></p>
Lake Nona B (Lab)	Lake Mizell B		S331D	
<p>pVN84 AIX R: Thu 4:15</p> <p>Live Partition Mobility <i>Ted Sullivan</i></p>	<p>pVN84 AIX R: Thu 4:15</p> <p>Live Partition Mobility <i>Ted Sullivan</i></p>		<p>eVR14</p> <p>Best practices for optimum IT Capacity Utilization - A lean 6 sigma Approach <i>Jordi Serras Marques or Aymeric Ratel (ORSYP)</i></p>	
Lake Concord B	Lake Hart A	Lake Hart B	S331B	S331C
<p>pST40 IBM i</p> <p>New Tools for managing IBM i <i>Keith Zblewski</i></p>	<p>pDT46 IBM i R: Fri 9:00</p> <p>Why every IBM i Developer should use Rational Developer for Power <i>Linda Cole</i></p>	<p>pST08 Power R: Fri 9:00</p> <p>IBM Systems Director for Power Systems <i>Bob Padzieski</i></p>	<p>eVR17</p> <p>Red Hat Enterprise Virtualization Overview <i>Andrew Cathrow</i></p>	<p>eVR05 R: Thu 10:30</p> <p>Building Intelligent and Scalable Data Center Networks with Cisco Systems <i>Brent Anderson (Cisco)</i></p>
Lake Nona B (Lab)	Lake Mizell B		S331D	
<p>pDT72 IBM i R: Fri 1:00</p> <p>Hands-on DB2 Web Query for i - OPEN Lab <i>Robert Andrews</i></p>	<p>pPE75 AIX R: Thu 4:15</p> <p>Analyzing and Resolving CPU Based Performance Issues <i>Scott "Tex" Nance</i></p>		<p>eVR15</p> <p>Improving your TCO with Enterprise SSDs <i>Esther Spanjer (Smart Technologies)</i></p>	

Power Systems Technical Symposium Agenda

Wednesday, April 27, 2011 (Continued)

2:30 PM – 3:45 PM

Lake George B	Lake Down A	Lake Down B	Lake Concord A
pWW63 Power R: Fri 9:00 POWER7 750 / 770 / 780 Deep Dive <i>Pat O'Rourke</i>	pAN32 AIX R: Thu 1:00 AIX Release Strategy changes and best management practices <i>Jay Kruemcke</i>	pVN23 IBM i/Demo R: Thu 10:30 VIOs in Action with IBM i <i>Gary Konicek</i>	pHY16 IBM i R: Thu 9:00 What's New with Backup/Recovery on IBM i <i>Debbie Saugen</i>
Lake George A	Lake Monroe B	Lake Monroe A	Lake Nona A (Lab)
pSS15 AIX R: Thu 2:30 Oracle and AIX tuning <i>Damir Rubic</i>	pVN29 Power R: Fri 10:30 Cloud 101 <i>Jaqui Lynch</i>	pHY54 AIX R: Thu 2:30 Designing a PowerHA SystemMirror for AIX High Availability Solution <i>Michael Herrera</i>	pHY07 AIX R: Thu 10:30 PowerHA SystemMirror 7.1 cluster configuration - lab <i>Bill Miller</i>

3:45 PM – 4:15 PM

Coffee Break ★ Sponsored by IBM iDoctor for IBM i and IBM Systems Lab Services and Training

4:15 PM – 5:30 PM

Lake George B	Lake Down A	Lake Down B	Lake Concord A
pWW64 Power R: Thu 4:15 Hardware / System Management for Power Systems <i>Pat O'Rourke & Chris Eisenmann</i>	pAN88 IBM i R: Thu 2:30 IBM i 6.1 or 7.1 Upgrade Planning: "Smooth Sailing" <i>Tracy Smith</i>	pWW04 IBM i R: Fri 9:00 Installation Options for IBM i on Power Systems <i>Allyn Walsh</i>	pST17 IBM i BRMS on IBM i Overview - What Does It Do and How Do I Implement It? <i>Debbie Saugen</i>
Lake George A	Lake Monroe B	Lake Monroe A	Lake Nona A (Lab)
pHY06 AIX R: Fri 9:00 What's new in PowerHA 7.1 <i>Bill Miller</i>	pWW42 AIX R: Thu 1:00 CloudBurst on Power Deep Dive <i>Kyle Wurgler</i>	pVN28 AIX R: Fri 1:00 VIO: Beyond the Basics <i>James Nash</i>	pST09 Power R: Thu 2:30 IBM Systems Director for Power Systems - Basic Lab <i>Bob Padzieski</i>

5:30 PM – 7:30 PM

Solution Center Reception — Florida Ballroom ★ Sponsored by Brocade

Power Systems Tracks and Page Reference for Abstracts			Systems
pAN: Administration85	pSY: Security97	pVN: Virtualization98	AIX
pHY: Availability24	pSS: Solutions93	pWW: What's New100	IBM i
pDT: Development86	pSE: Storage91	___: Vendor Sessions60	Linux
pPE: Performance90	pST: Systems Management . . .95		Net
			Power
			Storage

Power Systems Technical Symposium Agenda

Lake Concord B	Lake Hart A	Lake Hart B	S331B	S331C
pDT45 IBM i R: Fri 10:30 Modernizing i Applications <i>Leonardo Llamas</i>	pWW69 IBM i R: Thu 9:00 What's new in DB2 for IBM i <i>Doug Mack</i>	pVN36 Linux R: Thu 4:15 Linux for Power Virtualization and Emerging Technologies <i>Jeff Scheel</i>	eVR02 R: Thu 1:00 Create new SAN and SAN extension infrastructure changes with Power Server and DS8800 <i>Craig Nelson, Howard Johnson (Brocade)</i>	eVR06 Novell Session 1 <i>TBD</i>
Lake Nona B (Lab)	Lake Mizell B		S331D	
pST41 IBM i Performance Data Investigator Lab <i>Keith Zblewski</i>	pWW74 Storage Deduplication - It's not Magic, it's Math! <i>Ron Herrmann</i>		eVR16 How do I plan for End of Support of ESCON I/O on the next System z platform? <i>Sean Seitz, Michael Dailey (Optica)</i>	
Lake Concord B	Lake Hart A	Lake Hart B	S331B	S331C
pPE80 IBM i/Demo R: Fri 10:30 Get more out of Performance Data Investigator <i>Sue Baker</i>	pDT47 IBM i R: Fri 1:00 What's New in RPG? <i>Linda Cole</i>	pSS70 IBM i R: Thu 2:30 DB2 for IBM i Advanced SQL <i>Robert Andrews</i>		eVR09 Improve availability, manageability & reduce cost in a virtualized environment with Rack and Power solutions <i>Patrick Giangrosso, George Correia</i>
Lake Nona B (Lab)	Lake Mizell B		S331D	
pHY12 IBM i R: Fri 9:00 IASP Enablement LAB <i>Chuck Stupca/Laurel Schneckloth Bauer</i>	pPE76 AIX R: Fri 9:00 Analyzing and Resolving Memory Based Performance Issues <i>Scott "Tex" Nance</i>		eVR08 R: Thu 1:00 Revolutionizing IBM I/O <i>Tom Boucher (Emulex)</i>	

Follow the latest conference updates on Twitter or Facebook.



Tell us about your experience
Share your photos
View our videos and photos
Ask questions
Get connected!

twitter.com/IBMTechConfs (Use #ibmtechu)
 or "like" us on
facebook.com/IBMSLST4me

Power Systems Technical Symposium Agenda

Thursday, April 28, 2011

7:00 AM – 9:00 AM

Breakfast — Orlando Ballroom I & II ★ Sponsored by Cisco Systems

7:30 AM – 5:30 PM

Registration/Information

7:30 AM – 5:30 PM

Cyber Café — Lake Lucerne

8:00 AM – 6:00 PM

Certification Testing

9:00 AM – 10:15 AM

Lake George B	Lake Down A	Lake Down B	Lake Concord A
pWW61 Power R: Fri 1:00 POWER7 795 Deep Dive Pat O'Rourke	pWW49 Power R: Wed 1:00 Power 710/720/730/740 DeepDive Mark Olson	pWW78 IBM i R: Wed 10:30 IBM i Trends and Directions Steve Will	pDT03 IBM i Why PHP? Alison Butterill
Lake George A	Lake Monroe B	Lake Monroe A	Lake Nona A (Lab)
pWW91 AIX AIX Profile Manager Vandana Mallempati	pWW69 IBM i R: Wed 2:30 What's new in DB2 for IBM i Doug Mack	pST10 Power R: Fri 1:00 IBM Systems Director Active Energy Manager and Power Systems Bob Padzieski	pVN86 AIX R: Fri 1:00 Configuring NPIV on Power systems Ted Sullivan

10:15 AM – 10:30 AM

Coffee Break ★ Sponsored by IBM DDS6/DAT160 Tape Drive, IBM Storage Division and ORSYN Software

10:30 AM – 11:45 AM

Lake George B	Lake Down A	Lake Down B	Lake Concord A
pWW31 AIX R: Wed 10:30 AIX Trends and Directions Jay Kruemcke	pHY13 IBM i R: Wed 1:00 PowerHA in Action Chuck Stupca/Steve Finnes	pDT02 Power R: Wed 1:00 Application Development on Power Alison Butterill	pWW67 IBM i R: Fri 9:00 Experience DB2 Web Query for i Doug Mack
Lake George A	Lake Monroe B	Lake Monroe A	Lake Nona A (Lab)
pWW31 AIX R: Wed 10:30 AIX Trends and Directions Jay Kruemcke	pHY13 IBM i R: Wed 1:00 PowerHA in Action Chuck Stupca/Steve Finnes	pDT02 Power R: Wed 1:00 Application Development on Power Alison Butterill	pWW67 IBM i R: Fri 9:00 Experience DB2 Web Query for i Doug Mack

11:45 AM – 1:00 PM

Lunch — Orlando Ballroom I & II ★ Sponsored by Brocade

11:45 AM – 1:00 PM

Solution Center Open — Florida Ballroom

1:00 PM – 2:15 PM

Lake George B	Lake Down A	Lake Down B	Lake Concord A
pWW62 Power R: Fri 10:30 Power Systems IO Update Pat O'Rourke	pAN32 AIX R: Wed 2:30 AIX Release Strategy changes and best management practices Jay Kruemcke	pSE24 AIX R: Thu 4:15 IBM's General Parallel File Systems Overview Glen Corneau	pSS68 IBM i R: Thu 4:15 Expanding DB2 Web Query for i Robert Andrews
Lake George A	Lake Monroe B	Lake Monroe A	Lake Nona A (Lab)
pAN90 AIX R: Wed 1:00 Demystifying the AIX Kernel Vandana Mallempati	pHY18 AIX R: Wed 1:00 Power up your OLTP applications with DB2 pureScale Doug Mack	pWW42 AIX R: Wed 4:15 CloudBurst on Power Deep Dive Kyle Wurgler	pSE01 AIX R: Wed 1:00 XIV hands-on lab: Fibre Channel Configuration (in-conjunction with AIX hosts). Alex Abderrazag

2:15 PM – 2:30 PM

Break

Power Systems Tracks and Page Reference for Abstracts

pAN: Administration85	pSY: Security97	pVN: Virtualization98
pHY: Availability24	pSS: Solutions93	pWW: What's New100
pDT: Development86	pSE: Storage91	__: Vendor Sessions60
pPE: Performance90	pST: Systems Management . . .95	

Systems

AIX
IBM i
Linux
Net
Power
Storage

Power Systems Technical Symposium Agenda

Lake Concord B	Lake Hart A	Lake Hart B	S331B	S331C
<p>pHY16 IBM i R: Wed 2:30 What's New with Backup/Recovery on IBM i <i>Debbie Saugen</i></p>	<p>pWW87 IBM i R: Wed 1:00 IBM i 6.1 and 7.1 Technical Overview <i>Tracy Smith</i></p>	<p>pSY37 IBM i What's new in 6.1 & 7.1 Security <i>Jeff Uehling</i></p>	<p>eVR01 R: Wed 10:30 Create new SAN and SAN extension infrastructure changes with z196 zEnterprise server and DS8800 <i>Brian Larsen, (Brocade)</i></p>	<p>eVR07 Novell Session 2 <i>TBD</i></p>
Lake Nona B (Lab)	Lake Mizell B		S331D	
<p>pVN66 AIX R: Fri 10:30 POWER7 - Partiton Suspend/Resume and Hypervisor Memory Mirroring <i>Richard Bleistein</i></p>	<p>pPE77 AIX R: Fri 1:00 Analyzing and Resolving I/O Related Performance Problems <i>Scott "Tex" Nance</i></p>			
Lake Concord B	Lake Hart A	Lake Hart B	S331B	S331C
<p>pHY20 IBM i R: Fri 10:30 IBM i 6.1/7.1 Availability Enhancements <i>Eric Hess</i></p>	<p>pVN23 IBM i/Demo R: Wed 2:30 VIOS in Action with IBM i <i>Gary Konicek</i></p>	<p>pWW22 IBM i R: Fri 9:00 Advanced Networking for IBM i using VIOS <i>Fant Steele</i></p>	<p>eVR12 10G Ethernet Blueprint for Network Virtualization and I/O Convergence <i>David Berry (Broadcom)</i></p>	<p>eVR05 R: Wed 1:00 Building Intelligent and Scalable Data Center Networks with Cisco Systems <i>Brent Anderson (Cisco)</i></p>
Lake Nona B (Lab)	Lake Mizell B		S331D	
<p>pHY20 IBM i R: Fri 10:30 IBM i 6.1/7.1 Availability Enhancements <i>Eric Hess</i></p>	<p>pVN23 IBM i/Demo R: Wed 2:30 VIOS in Action with IBM i <i>Gary Konicek</i></p>		<p>eVR99 Best Practices for Deploying Brocade Solutions for System x & BladeCenter <i>Mike Sautler, Howard Johnson, Multiple IBM SME's</i></p>	
Lake Concord B	Lake Hart A	Lake Hart B	S331B	S331C
<p>pSE21 IBM i R: Fri 1:00 An Introduction to External Storage on IBM i <i>Eric Hess</i></p>	<p>pWW50 Power Solid State Drives Aren't the Future - They're the Present Mark Olson</p>	<p>pHY44 IBM i PowerHA IASP Enablement and Experiences Laural Schneckloth</p>	<p>eVR02 R: Wed 2:30 Create new SAN and SAN extension infrastructure changes with Power Server and DS8800 <i>Craig Nelson, Howard Johnson (Brocade)</i></p>	<p>eVR04 VMware View Best Practices <i>Baker Hull (VMware)</i></p>
Lake Nona B (Lab)	Lake Mizell B		S331D	
<p>pVN89 Power R: Wed 10:30 Deploying the POWER7 Based Blade with BladeCenter Open Fabric Manager Trina Bunting</p>	<p>pAN56 Linux Implementing SUSE on POWER 7 Systems Mike Carline</p>		<p>eVR08 R: Wed 4:15 Revolutionizing IBM I/O <i>Tom Boucher (Emulex)</i></p>	

Power Systems Technical Symposium Agenda

Thursday, April 28, 2011 (Continued)

2:30 PM – 3:45 PM

Lake George B	Lake Down A	Lake Down B	Lake Concord A
pWW73 Power/Demo R: Fri 10:30 VIOS Shared Storage Pools (was called NextGen) Ron Barker	pPE30 AIX R: Fri 1:00 AIX Performance Tuning Jaqui Lynch	pSE39 Power R: Fri 1:00 Working with MPIO, SDDPCM, SDD and SAN boot John Hock	pSS70 IBM i R: Wed 4:15 DB2 for IBM i Advanced SQL Robert Andrews

Lake George A	Lake Monroe B	Lake Monroe A	Lake Nona A (Lab)
pSS15 AIX R: Wed 2:30 Oracle and AIX tuning Damir Rubic	pHY54 AIX R: Wed 2:30 Designing a PowerHA SystemMirror for AIX High Availability Solution Michael Herrera	pVN52 AIX R: Fri 9:00 IBM Workload Partitions for AIX (WPAR) & Workload Partitions Manager Mehboob Mithaiwala	pST09 Power R: Wed 4:15 IBM Systems Director for Power Systems - Basic Lab Bob Padzieski

3:45 PM – 4:15 PM

Coffee Break ★ Sponsored by IBM Storage Media and IBM System x Rack and Power Infrastructure

4:15 PM – 5:30 PM

Lake George B	Lake Down A	Lake Down B	Lake Concord A
pWW48 Power Hot Off the Press: Very Recent 2011 Announcements Mark Olson	pWW64 Power R: Wed 4:15 Hardware / System Management for Power Systems Pat O'Rourke & Chris Eisenmann	pSE24 AIX R: Thu 1:00 IBM's General Parallel File Systems Overview Glen Corneau	pSS68 IBM i R: Thu 1:00 Expanding DB2 Web Query for i Robert Andrews

Lake George A	Lake Monroe B	Lake Monroe A	Lake Nona A (Lab)
pVN53 AIX/Demo R: Fri 10:30 DEMO: Managing AIX Workload Partitions (WPARs) Mehboob Mithaiwala	pHY55 AIX R: Fri 10:30 Designing a PowerHA SystemMirror for AIX Disaster Recovery Solution Michael Herrera	pWW43 AIX R: Fri 10:30 CloudBurst on Power and VMControl Demo Kyle Wurgler	pVN84 AIX R: Wed 10:30 Live Partition Mobility Ted Sullivan

5:30 PM – 6:30 PM

Solution Center Reception — Florida Ballroom ★ Sponsored by IBM Systems Agenda Delivery

Power Systems Tracks and Page Reference for Abstracts			Systems
pAN: Administration85	pSY: Security97	pVN: Virtualization98	AIX
pHY: Availability24	pSS: Solutions93	pWW: What's New100	IBM i
pDT: Development86	pSE: Storage91	__: Vendor Sessions60	Linux
pPE: Performance90	pST: Systems Management . . .95		Net
			Power
			Storage

Power Systems Technical Symposium Agenda

Lake Concord B	Lake Hart A	Lake Hart B	S331B	S331C
<p>pSE81 IBM i R: Fri 1:00 Choosing disk storage for IBM i Sue Baker</p>	<p>pAN88 IBM i R: Wed 4:15 IBM i 6.1 or 7.1 Upgrade Planning: "Smooth Sailing" Tracy Smith</p>	<p>pSY38 IBM i Security - Best Practices Jeff Uehling</p>	<p>eVR11 The Time for the New Network is Now! Introducing QFabric™ architecture Vaishali Ghiya, Mark Hinckley (Juniper Network)</p>	<p>eVR10 New IBM System x KVM Solutions Steve Hahn, Ed Johnston</p>
Lake Nona B (Lab)	Lake Mizell B		S331D	
<p>pSS59 AIX Architectural choices for running SAP on Power Systems with AIX or Linux Nelson Orengo</p>	<p>pWW35 Linux R: Wed 10:30 Linux for Power Trends and Directions Jeff Scheel</p>			
Lake Concord B	Lake Hart A	Lake Hart B		
<p>pVN65 AIX R: Wed 10:30 NPIV - Power Implementation in a Live Partition Mobility (LPM) environment Richard Bleistein</p>	<p>pAN57 Linux Implementing Red Hat on POWER 7 Systems Mike Carline</p>	<p>pVN36 Linux R: Wed 2:30 Linux for Power Virtualization and Emerging Technologies Jeff Scheel</p>		
Lake Nona B (Lab)	Lake Mizell B			
<p>pSE83 Storage R: Wed 10:30 Storage Trends and Directors for Power Systems Susan Schreitmuller/Brian Sherman</p>	<p>pPE75 AIX R: Wed 1:00 Analyzing and Resolving CPU Based Performance Issues Scott "Tex" Nance</p>			

Power Systems Technical Symposium Agenda

Friday, April 29, 2011

7:00 AM – 9:00 AM
 7:30 AM – 2:30 PM
 7:30 AM – 2:30 PM
 8:00 AM – 2:00 PM
 9:00 AM – 10:15 AM

Breakfast — Florida Ballroom 4 – 7 ★ Sponsored by IBM System x Rack and Power Infrastructure

Registration/Information

Cyber Café — Lake Lucerne

Certification Testing

Lake George B	Lake Down A	Lake Down B	Lake Concord A
---------------	-------------	-------------	----------------

<p>pWW63 Power R: Wed 2:30 POWER7 750 / 770 / 780 Deep Dive <i>Pat O'Rourke</i></p>	<p>pHY06 AIX R: Wed 4:15 What's new in PowerHA 7.1 <i>Bill Miller</i></p>	<p>pWW67 IBM i R: Thu 10:30 Experience DB2 Web Query for i <i>Doug Mack</i></p>	<p>pDT46 IBM i R: Wed 1:00 Why every IBM i Developer should use Rational Developer for Power <i>Linda Cole</i></p>
---	---	---	--

Lake George A	Lake Monroe B	Lake Monroe A	Lake Nona A (Lab)
---------------	---------------	---------------	-------------------

<p>pST08 Power R: Wed 1:00 IBM Systems Director for Power Systems <i>Bob Padzieski</i></p>	<p>pST25 AIX R: Fri 1:00 Managing Power Systems virtualization with Systems Director VMControl <i>Glen Corneau</i></p>	<p>pVN52 AIX R: Thu 2:30 IBM Workload Partitions for AIX (WPAR) & Workload Partitions Manager <i>Mehboob Mithaiwala</i></p>	<p>pSY85 AIX AIX Security <i>Ted Sullivan</i></p>
--	--	---	---

10:15 AM – 10:30 AM
 10:30 AM – 11:45 AM

Coffee Break ★ Sponsored by Emulex and IBM Destination z

Lake George B	Lake Down A	Lake Down B	Lake Concord A
---------------	-------------	-------------	----------------

<p>pWW62 Power R: Thu 1:00 Power Systems IO Update <i>Pat O'Rourke</i></p>	<p>pVN27 AIX R: Wed 1:00 Partition Suspend/Resume and other new features with VIO 2.2 Fixpack 24 <i>James Nash</i></p>	<p>pWW73 Power/Demo R: Thu 2:30 VIOS Shared Storage Pools (was called NextGen) <i>Ron Barker</i></p>	<p>pVN66 AIX R: Thu 9:00 POWER7 - Partition Suspend/Resume and Hypervisor Memory Mirroring <i>Richard Bleistein</i></p>
--	--	--	---

Lake George A	Lake Monroe B	Lake Monroe A	Lake Nona A (Lab)
---------------	---------------	---------------	-------------------

<p>pHY55 AIX R: Thu 4:15 Designing a PowerHA SystemMirror for AIX Disaster Recovery Solution <i>Michael Herrera</i></p>	<p>pWW43 AIX R: Thu 4:15 CloudBurst on Power and VMControl Demo <i>Kyle Wurgler</i></p>	<p>pVN29 Power R: Wed 2:30 Cloud 101 <i>Jaqui Lynch</i></p>	<p>pDT11 AIX Korn Shell programming for Unix admins/users <i>Alex Abderrazag</i></p>
---	---	---	--

11:45 AM – 1:00 PM
 1:00 PM – 2:15 PM

Lunch — Orlando Ballroom I & II ★ Sponsored by Novell, Inc.

Lake George B	Lake Down A	Lake Down B	Lake Concord A
---------------	-------------	-------------	----------------

<p>pWW61 Power R: Thu 9:00 POWER7 795 Deep Dive <i>Pat O'Rourke</i></p>	<p>pVN28 AIX R: Wed 4:15 VIO: Beyond the Basics <i>James Nash</i></p>	<p>pSE82 Storage R: Thu 10:30 Power Systems Storage Tips and Tricks for IBM Storage <i>Susan Schreitmuller/Chuck Laing</i></p>	<p>pDT47 IBM i R: Wed 4:15 What's New in RPG? <i>Linda Cole</i></p>
---	---	--	---

Lake George A	Lake Monroe B	Lake Monroe A	Lake Nona A (Lab)
---------------	---------------	---------------	-------------------

<p>pST10 Power R: Thu 9:00 IBM Systems Director Active Energy Manager and Power Systems <i>Bob Padzieski</i></p>	<p>pST25 AIX R: Fri 9:00 Managing Power Systems virtualization with Systems Director VMControl <i>Glen Corneau</i></p>	<p>pPE30 AIX R: Thu 2:30 AIX Performance Tuning <i>Jaqui Lynch</i></p>	<p>pVN86 AIX R: Thu 9:00 Configuring NPIV on Power systems <i>Ted Sullivan</i></p>
--	--	--	--

2:15 PM

Conference Ends

Power Systems Tracks and Page Reference for Abstracts			Systems
pAN: Administration85	pSY: Security97	pVN: Virtualization98	AIX
pHY: Availability24	pSS: Solutions93	pWW: What's New100	IBM i
pDT: Development86	pSE: Storage91	__ : Vendor Sessions60	Linux
pPE: Performance90	pST: Systems Management . . .95		Net
			Power
			Storage

Power Systems Technical Symposium Agenda

Lake Concord B	Lake Hart A	Lake Hart B
<p>pWW51 Power R: Wed 4:15</p> <p>POWER7 Capacity on Demand <i>Mark Olson</i></p>	<p>pWW04 IBM i R: Wed 4:15</p> <p>Installation Options for IBM i on Power Systems <i>Allyn Walsh</i></p>	<p>pWW22 IBM i R: Thu 10:30</p> <p>Advanced Networking for IBM i using VIOS <i>Fant Steele</i></p>
Lake Nona B (Lab)	Lake Mizell B	
<p>pHY12 IBM i R: Wed 4:15</p> <p>IASP Enablement LAB <i>Chuck Stupca/Laurel Schneekloth Bauer</i></p>	<p>pPE76 AIX R: Wed 4:15</p> <p>Analyzing and Resolving Memory Based Performance Issues <i>Scott "Tex" Nance</i></p>	
Lake Concord B	Lake Hart A	Lake Hart B
<p>pPE80 IBM i/Demo R: Wed 4:15</p> <p>Get more out of Performance Data Investigator <i>Sue Baker</i></p>	<p>pHY20 IBM i R: Thu 10:30</p> <p>IBM i 6.1/7.1 Availability Enhancements <i>Eric Hess</i></p>	<p>pDT45 IBM i R: Wed 2:30</p> <p>Modernizing i Applications <i>Leonardo Llamas</i></p>
Lake Nona B (Lab)	Lake Mizell B	
<p>pSS71 IBM i R: Wed 10:30</p> <p>OPEN LAB: DBA Tools for IBM i <i>Robert Andrews</i></p>	<p>pVN53 AIX/Demo R: Thu 4:15</p> <p>DEMO: Managing AIX Workload Partitions (WPARs) <i>Mehboob Mithaiwala</i></p>	
Lake Concord B	Lake Hart A	Lake Hart B
<p>pSE81 IBM i R: Thu 2:30</p> <p>Choosing disk storage for IBM i <i>Sue Baker</i></p>	<p>pSE21 IBM i R: Thu 1:00</p> <p>An Introduction to External Storage on IBM i <i>Eric Hess</i></p>	<p>pSE39 Power R: Thu 2:30</p> <p>Working with MPIIO, SDDPCM, SDD and SAN boot <i>John Hock</i></p>
Lake Nona B (Lab)	Lake Mizell B	
<p>pDT72 IBM i R: Wed 1:00</p> <p>Hands-on DB2 Web Query for i - OPEN Lab <i>Robert Andrews</i></p>	<p>pPE77 AIX R: Thu 9:00</p> <p>Analyzing and Resolving I/O Related Performance Problems <i>Scott "Tex" Nance</i></p>	

A Smarter Planet starts with you.

Build your skills at an IBM Technical University

2011 IBM Power Systems Technical University

October 10 - 14 | Fontainebleau Miami Beach | Miami Beach, FL

You can use IBM Education Packs or PartnerRewards Education Vouchers to pay the tuition for these events!*

ENROLL EARLY for BIGGER SAVINGS!
Enroll today!

Early bird pricing available until 9/11.

Don't miss the opportunity to see what's new in IBM® Power Systems™ (IBM AIX®, Linux and IBM i), network with colleagues and meet with our subject matter experts in a professional networking collaboration of technical gurus and industry professionals and your peers! Refresh your skills and learn how recent IBM Power technology can benefit you and your data center.

Select from more than 300 sessions aligned in 10 tracks to customize your own agenda with topics most important to you.

ibm.com/training/us/conf/power
twitter.com/IBMTechConfs

Sponsor and Exhibitor opportunities available: Visit **ibm.com/training/solutioncenter**

**The PartnerReward program is for IBM Business Partners and is not available in all geographies.*

IBM, the IBM logo, ibm.com, AIX, Power Systems, and Smarter Planet are trademarks or registered trademarks of International Business Machines Corporation in the United States, other countries, or both. A current list of IBM trademarks is available on the Web at "Copyright and trademark information" at: ibm.com/legal/copytrade.shtml. Linux is a registered trademark of Linus Torvalds in the United States, other countries, or both.



Power Systems By-Track Agenda and Abstracts

Administration

Wednesday	Room	ID	Title	Speaker(s)	Repeat
1:00 PM	Lake George A	pAN90	Demystifying the AIX Kernel	Vandana Mallempati	Thu 1:00
2:30 PM	Lake Down A	pAN32	AIX Release Strategy changes and best management practices	Jay Kruemcke	Thu 1:00
4:15 PM	Lake Down A	pAN88	IBM i 6.1 or 7.1 Upgrade Planning: "Smooth Sailing"	Tracy Smith	Thu 2:30
Thursday					
1:00 PM	Lake Down A	pAN32	AIX Release Strategy changes and best management practices	Jay Kruemcke	Wed 2:30
1:00 PM	Lake George A	pAN90	Demystifying the AIX Kernel	Vandana Mallempati	Wed 1:00
1:00 PM	Lake Mizell B	pAN56	Implementing SUSE on POWER 7 Systems	Mike Carline	
2:30 PM	Lake Hart A	pAN88	IBM i 6.1 or 7.1 Upgrade Planning: "Smooth Sailing"	Tracy Smith	Wed 4:15
4:15 PM	Lake Hart A	pAN57	Implementing Red Hat on POWER 7 Systems	Mike Carline	

pAN32 AIX Release Strategy changes and best management practices

Lecture: Jay Kruemcke
AIX — Intermediate

Over the past several years, the AIX lifecycle and release strategy has been enhanced to simplify management of AIX. This session will cover some of the most recent changes to the release strategy as well as a discussion on best practices for managing AIX and Power Systems.

pAN33 Power Systems Meet the Experts

Lecture: Jay Kruemcke
Power — Intermediate

Had some questions that you didn't get a chance to ask in the session? Then come to the Meet the Experts session. This is your opportunity to ask questions and hopefully get answers in a session devoted to YOU. We will have a number of the speakers available for this informal session.

pAN56 Implementing SUSE on POWER 7 Systems

Lecture: Mike Carline
Linux — Intermediate

We'll provide an overview of the considerations for installing and maintaining SUSE Linux Enterprise Server on the latest Power Systems.

pAN57 Implementing Red Hat on POWER 7 Systems

Lecture: Mike Carline
Linux — Intermediate

We'll provide an overview of the considerations for installing and maintaining Red Hat Enterprise Linux on the latest Power Systems.

pAN88 IBM i 6.1 or 7.1 Upgrade Planning: "Smooth Sailing"

Lecture: Tracy Smith
IBM i — Intermediate

Are you considering an upgrade to IBM i 6.1 or 7.1? Whether it is several months from now or being planned for next year, please consider attending this session since we'll be discussing planning tips which should prove useful for your upgrade to IBM i 6.1 or 7.1. In addition, you'll learn about the on-line upgrade planning resources available to you. Last but not least, after attending, you will be familiar with a useful IBM pre-upgrade verification tool as well as the "Top-10" keys to a smooth and successful upgrade to IBM i 6.1 or 7.1.

pAN90 Demystifying the AIX Kernel

Lecture: Vandana Mallempati
AIX — Intermediate

In this session, we will talk about the conceptual overview of the entire AIX Kernel. Topics include boot process, process management, memory management, LVM, Filesystem, loader, linker, device drivers.

Power Systems By-Track Agenda and Abstracts

Development

Wednesday	Room	ID	Title	Speaker(s)	Repeat
1:00 PM	Lake Hart A	pDT46	Why every IBM i Developer should use Rational Developer for Power	Linda Cole	Fri 9:00
1:00 PM	Lake Nona B	pDT72	Hands-on DB2 Web Query for i - OPEN Lab	Robert Andrews	Fri 1:00
1:00 PM	Lake Down B	pDT02	Application Development on Power	Alison Butterill	Thu 10:30
2:30 PM	Lake Concord B	pDT45	Modernizing i Applications	Leonardo Llamas	Fri 10:30
4:15 PM	Lake Hart A	pDT47	What's New in RPG?	Linda Cole	Fri 1:00
Thursday					
9:00 AM	Lake Concord A	pDT03	Why PHP?	Alison Butterill	
10:30 AM	Lake Down B	pDT02	Application Development on Power	Alison Butterill	Wed 1:00
Friday					
9:00 AM	Lake Concord A	pDT46	Why every IBM i Developer should use Rational Developer for Power	Linda Cole	Wed 1:00
10:30 AM	Lake Nona A	pDT11	Korn Shell programming for Unix admins/users	Alex Abderrazag	
10:30 AM	Lake Hart B	pDT45	Modernizing i Applications	Leonardo Llamas	Wed 2:30
1:00 PM	Lake Concord A	pDT47	What's New in RPG?	Linda Cole	Wed 4:15
1:00 PM	Lake Nona B	pDT72	Hands-on DB2 Web Query for i - OPEN Lab	Robert Andrews	Wed 1:00

pDT02 Application Development on Power

Lecture: Alison Butterill
Power — Basic

With the consolidation of IBM's hardware platforms in the mid-market arena onto Power Systems, companies are evaluating their software and trying to understand strengths, weaknesses, similarities and differences. This is true for compilers and tools used for Application Development also. This presentation will review industry trends and directions as well as cover the IBM Offerings for developing applications for AIX, i and Linux on Power Systems.

pDT03 Why PHP?

Lecture: Alison Butterill
IBM i — Basic

PHP is a new and exciting language for developing/deploying Web-based applications. In 2006, IBM introduced PHP for Web application development for IBM i. Is PHP the right tool for you to extend your current IBM i application suite, or to extend your company's reach to new customers? This session will explore typical uses of the language and review implementations where PHP makes sense.

pDT11 Korn Shell programming for Unix admins/users

Lab: Alex Abderrazag
AIX — Intermediate

This is a lab session, designed around a shell script which allows you (the user) to play blackjack against the system. We shall trace through the blackjack script and identify key shell programming constructs. This session is ideal for those who use 'Unix' type platforms but are not competent with shell programming.

pDT45 Modernizing i Applications

Lecture: Leonardo Llamas
IBM i — Intermediate

Due to the IBM i architecture, applications that were written decades ago can run on the latest systems without recompilation. Session describes advantages of modernizing application tiers (DB, business logic, UI) and provides options for doing so.

pDT46 Why every IBM i Developer should use Rational Developer for Power

Lecture: Linda Cole
IBM i — Basic

This session is targeted at technology leaders that want to improve efficiency and productivity of their team, as well as IBM i developers who want to learn about the latest advances in technology for making development easier, faster and more enjoyable. We will provide an overview of the capabilities of the Rational Developer for Power product, with emphasis on targeting IBM i, focusing on the editor, debugger, remote system synchronization components, as well as integration into other companion products such as Rational Team Concert.

pDT47 What's New in RPG?

Lecture: Linda Cole
IBM i — Intermediate

RPG IV is alive and well. Each release adds new function and enhances existing ones, keeping the language modern by anyone's programming standards! This session will provide a quick review of the enhancements made to the RPG IV language in previous versions and then focus specifically on the 6.1 and 7.1 announcements, including IBM Rational Open Access: RPG Edition. This is your chance to hear about what's been happening lately in the world of RPG IV.

pDT72 Hands-on DB2 Web Query for i - OPEN Lab

Lab: Robert Andrews

IBM i — Basic

This session will allow you to get hands-on with the latest in DB2 Web Query technology. Come take control of a PC and take control of your data with InfoAssist. You will use the InfoAssist development tool to create a series of reports and graphs that provide real-world experience you can apply at the home office. This will be an open lab, meaning you can work at your own pace. Questions will be entertained and supported provided throughout the session.

Follow the latest conference updates on
Twitter or Facebook.

twitter



Tell us about your experience

Share your photos

View our videos and photos

Ask questions

Get connected!

twitter.com/IBMTechConfs (Use #ibmtechu)

or "like" us on

facebook.com/IBMSLST4me

Power Systems By-Track Agenda and Abstracts

Availability

Wednesday	Room	ID	Title	Speaker(s)	Repeat
10:30 AM	Lake Concord A	pHY79	PowerHA SystemMirror for AIX: Offering & strategy	Steven Finnes	
1:00 PM	Lake Monroe B	pHY18	Power up your OLTP applications with DB2 pureScale	Doug Mack	Thu 1:00
1:00 PM	Lake Concord A	pHY13	PowerHA in Action	Chuck Stupca/Steve Finnes	Thu 10:30
2:30 PM	Lake Nona A	pHY07	PowerHA SystemMirror 7.1 cluster configuration - lab	Bill Miller	Thu 10:30
2:30 PM	Lake Monroe A	pHY54	Designing a PowerHA SystemMirror for AIX High Availability Solution	Michael Herrera	Thu 2:30
2:30 PM	Lake Concord A	pHY16	What's New with Backup/Recovery on IBM i	Debbie Saugen	Thu 9:00
4:15 PM	Lake George A	pHY06	What's new in PowerHA 7.1	Bill Miller	Fri 9:00
4:15 PM	Lake Nona B	pHY12	IASP Enablement LAB	Chuck Stupca/ Laurel Schneckloth Bauer	Fri 9:00
Thursday					
9:00 AM	Lake Concord B	pHY16	What's New with Backup/Recovery on IBM i	Debbie Saugen	Wed 2:30
10:30 AM	Lake Nona A	pHY07	PowerHA SystemMirror 7.1 cluster configuration - lab	Bill Miller	Wed 2:30
10:30 AM	Lake Down A	pHY13	PowerHA in Action	Chuck Stupca/Steve Finnes	Wed 1:00
10:30 AM	Lake Concord B	pHY20	IBM i 6.1/7.1 Availability Enhancements	Eric Hess	Fri 10:30
1:00 PM	Lake Monroe B	pHY18	Power up your OLTP applications with DB2 pureScale	Doug Mack	Wed 1:00
1:00 PM	Lake Hart B	pHY44	PowerHA IASP Enablement and Experiences	Laural Schneckloth	
2:30 PM	Lake Monroe B	pHY54	Designing a PowerHA SystemMirror for AIX High Availability Solution	Michael Herrera	Wed 2:30
4:15 PM	Lake Monroe B	pHY55	Designing a PowerHA SystemMirror for AIX Disaster Recovery Solution	Michael Herrera	Fri 10:30
Friday					
9:00 AM	Lake Down A	pHY06	What's new in PowerHA 7.1	Bill Miller	Wed 4:15
9:00 AM	Lake Nona B	pHY12	IASP Enablement LAB	Chuck Stupca/ Laurel Schneckloth Bauer	Wed 4:15
10:30 AM	Lake George A	pHY55	Designing a PowerHA SystemMirror for AIX Disaster Recovery Solution	Michael Herrera	Thu 4:15
10:30 AM	Lake Hart A	pHY20	IBM i 6.1/7.1 Availability Enhancements	Eric Hess	Thu 10:30

pHY06 What's new in PowerHA 7.1

Lecture: Bill Miller
AIX — Intermediate

The presentation will discuss the changes in PowerHA 7.1 compared to powerHA 6.1.

pHY13 PowerHA in Action

Lecture: Chuck Stupca/Steve Finnes
IBM i — Intermediate

In this session a description of the solutions that enable HA on IBM i will be discussed. The session will include a demonstration of a highly available web application.

pHY07 PowerHA SystemMirror 7.1 cluster configuration - lab

Lab: Bill Miller
AIX — Basic

Attendees will configure a two node PowerHA SystemMirror cluster using the recently release 7.1 code.

pHY16 What's New with Backup/Recovery on IBM i

Lecture: Debbie Saugen
IBM i — Intermediate

Find out what new things you need to know for the very latest releases of IBM i to ensure you have a good backup strategy. Learn what changes need to be made to update your disaster recovery plans. Hear about all the new and exciting changes for Backup and Recovery along with the latest and greatest for Backup Recovery and Media Services (BRMS).

pHY12 IASP Enablement LAB

Lab: Chuck Stupca/Laurel Schneckloth Bauer
IBM i — Intermediate

In this lab, students will learn how to load a library into an IASP and to perform typical application functions using the IASP contents

pHY18 Power up your OLTP applications with DB2 pureScale

Lecture: Doug Mack
AIX — Intermediate

Database availability is paramount to today's OLTP environments, as is managing growth with flexibility and ease. DB2 pureScale provides a near linear scaling and availability cluster solution to meet the demands of today's mission critical OLTP apps that is more efficient and less costly than Oracle RAC! Learn how Power Systems and DB2 combine to bring the highest levels of database availability and scalability, second only to IBM's time tested mainframe technology to the distributed platform arena!

pHY20 IBM i 6.1/7.1 Availability Enhancements

Lecture: Eric Hess
IBM i — Basic

IBM i 6.1 and 7.1 offer many new features and functions to make meeting your availability goals easier. In fact there are so many new options available to you, they can be hard to keep track of, or to know how to best take advantage of them. Whether you simply want to enhance your nightly backup, make use of the latest redundancy functions or understand the latest solutions for clusters and PowerHA, this session will provide you information on the latest IBM i uptime enhancements and recommendations, as well as where more detailed information can be found.

pHY44 PowerHA IASP Enablement and Experiences

Lecture: Laural Schneckloth
IBM i — Intermediate

Implementing IASPs as a foundation for IBM i PowerHA solutions - what to expect, best practices and experiences from assisting many customers in adopting this technology.

pHY54 Designing a PowerHA SystemMirror for AIX High Availability Solution

Lecture: Michael Herrera
AIX — Intermediate

Designing a PowerHA SystemMirror for AIX High Availability Solution This session is intended to go over solution design best practices within a clustered PowerHA environment. The topics include recommendations for optimized redundancy. The session includes product updates in the new 7.1 release. It will also cover PowerHA virtualized environments, their interaction with Live Partition Mobility and the positioning statement for the combination.

pHY55 Designing a PowerHA SystemMirror for AIX Disaster Recovery Solution

Lecture: Michael Herrera
AIX — Intermediate

This session will review the progression from a local PowerHA cluster into a DR environment. It will review the different available offerings within the cluster software and will focus on how to being to plan out and design a DR solution with the Enterprise Edition. The goals are to help identify the most likely option for your DR needs, clarify any confusion about the offerings and help set expectations.

pHY79 PowerHA SystemMirror for AIX: Offering & strategy

Lecture: Steven Finnes
AIX — Intermediate

The PowerHA for AIX product offering and strategy will be covered in detail.

Power Systems By-Track Agenda and Abstracts

Performance

Wednesday	Room	ID	Title	Speaker(s)	Repeat
1:00 PM	Lake Mizell B	pPE75	Analyzing and Resolving CPU Based Performance Issues	Scott "Tex" Nance	Fri 4:15
4:15 PM	Lake Mizell B	pPE76	Analyzing and Resolving Memory Based Performance Issues	Scott "Tex" Nance	Fri 9:00
4:15 PM	Lake Concord B	pPE80	Get more out of Performance Data Investigator	Sue Baker	Fri 10:30
Thursday					
9:00 AM	Lake Mizell B	pPE77	Analyzing and Resolving I/O Related Performance Problems	Scott "Tex" Nance	Fri 1:00
2:30 PM	Lake Down A	pPE30	AIX Performance Tuning	Jaqui Lynch	Fri 1:00
4:15 PM	Lake Mizell B	pPE75	Analyzing and Resolving CPU Based Performance Issues	Scott "Tex" Nance	Wed 1:00
Friday					
9:00 AM	Lake Mizell B	pPE76	Analyzing and Resolving Memory Based Performance Issues	Scott "Tex" Nance	Wed 4:15
10:30 AM	Lake Concord B	pPE80	Get more out of Performance Data Investigator	Sue Baker	Wed 4:15
1:00 PM	Lake Monroe A	pPE30	AIX Performance Tuning	Jaqui Lynch	Thu 2:30
1:00 PM	Lake Mizell B	pPE77	Analyzing and Resolving I/O Related Performance Problems	Scott "Tex" Nance	Thu 9:00

pPE30 AIX Performance Tuning

Lecture: Jaqui Lynch
AIX — Intermediate

This presentation describes a recommended set of starter tunables to be used on any AIX system and goes into the details of how to determine the settings for those tunables and how to set them. It looks at the general performance tuning approach and tuning memory in particular. Topics around file systems, HBA settings and queue_depth settings are explored along with file system layout, concurrent I/O and Asynchronous I/O. During the session differences between AIX v5.3, v6.1 and v7 for the settings are explained.

pPE75 Analyzing and Resolving CPU Based Performance Issues

Lecture: Scott "Tex" Nance
AIX — Intermediate

In this Advanced CPU Performance session you will be shown how to measure and analyze complex performance issues on virtual and physical CPUs. This session will use actual PMR based case studies to show you how to use advanced AIX monitoring tools such as system trace, tprof and curt to identify the cause of CPU constraints and some tuning considerations you can use to optimize system performance.

pPE76 Analyzing and Resolving Memory Based Performance Issues

Lecture: Scott "Tex" Nance
AIX — Intermediate

In this Advanced Memory Performance session you will be shown how to measure and analyze complex memory performance issues on Power Systems running AIX 6.1. This session will use actual PMR based case studies to show you how to use advanced AIX monitoring tools such as svmon and ipcs as well as giving you some tuning considerations that can help optimize system performance.

pPE77 Analyzing and Resolving I/O Related Performance Problems

Lecture: Scott "Tex" Nance
AIX — Intermediate

In this Advanced I/O Performance session you will be shown some techniques you can use to measure, analyze, and tune complex I/O performance issues on IBM pSeries systems running AIX 6. This course will describe the characteristics of conventional I/O, direct I/O, concurrent I/O, and asynchronous I/O. The students will be able to identify if the expected type of I/O is being executed.

pPE80 Get more out of Performance Data Investigator

Demo: Sue Baker
IBM i — Intermediate

You can graph performance data that is meaningful to your operating environment using Performance Data Investigator (PDI). This session will demonstrate how easy it is. Use PDI to help you bring performance information to life.

Power Systems By-Track Agenda and Abstracts

Storage

Wednesday	Room	ID	Title	Speaker(s)	Repeat
10:30 AM	Lake Hart B	pSE83	Storage Trends and Directors for Power Systems	Susan Schreitmueller/Brian Sherman	Thu 4:15
1:00 PM	Lake Nona A	pSE01	XIV hands-on lab: Fibre Channel Configuration (in-conjunction with AIX hosts).	Alex Abderrazag	Thu 1:00
Thursday					
10:30 AM	Lake Nona B	pSE82	Power Systems Storage Tips and Tricks for IBM Storage	Susan Schreitmueller/Chuck Laing	Fri 1:00
1:00 PM	Lake Nona A	pSE01	XIV hands-on lab: Fibre Channel Configuration (in-conjunction with AIX hosts).	Alex Abderrazag	Wed 1:00
1:00 PM	Lake Down B	pSE24	IBM's General Parallel File Systems Overview	Glen Corneau	Thu 4:15
1:00 PM	Lake Concord B	pSE21	An Introduction to External Storage on IBM i	Eric Hess	Fri 1:00
2:30 PM	Lake Concord B	pSE81	Choosing disk storage for IBM i	Sue Baker	Fri 1:00
2:30 PM	Lake Down B	pSE39	Working with MPIO, SDDPCM, SDD and SAN boot	John Hock	Fri 1:00
4:15 PM	Lake Down B	pSE24	IBM's General Parallel File Systems Overview	Glen Corneau	Thu 1:00
4:15 PM	Lake Nona B	pSE83	Storage Trends and Directors for Power Systems	Susan Schreitmueller/Brian Sherman	Wed 10:30
Friday					
1:00 PM	Lake Hart A	pSE21	An Introduction to External Storage on IBM i	Eric Hess	Thu 1:00
1:00 PM	Lake Concord B	pSE81	Choosing disk storage for IBM i	Sue Baker	Thu 2:30
1:00 PM	Lake Hart B	pSE39	Working with MPIO, SDDPCM, SDD and SAN boot	John Hock	Thu 2:30
1:00 PM	Lake Down B	pSE82	Power Systems Storage Tips and Tricks for IBM Storage	Susan Schreitmueller/Chuck Laing	Thu 10:30

pSE01 XIV hands-on lab: Fibre Channel Configuration (in-conjunction with AIX hosts).

Lab: Alex Abderrazag
AIX — Intermediate

In this lab you will configure storage pools, volumes and LUNs on an XIV storage system using the XIV GUI. You will then map the LUNs to an AIX host and explore multi-pathing options. The LUNs will then be synchronously mirrored cross site to a DR XIV system. You will also use the XIV snapshot feature to create and restore a snapshot volume.

pSE21 An Introduction to External Storage on IBM i

Lecture: Eric Hess
IBM i — Intermediate

Storage strategies are a top IT planning priority, and the options are complex to sort through, even on IBM i. From basic internal storage, to Solid State Drives, to flexible SAN external storage, deciding on a viable storage decision has become much more complex. This session will introduce you to all of possible external disk storage options available on IBM i, from high performance, to near line, to archive. We'll discuss how each storage technology can be used on IBM i, and how each one may fit into your storage strategy decision.

pSE24 IBM's General Parallel File Systems Overview

Lecture: Glen Corneau
AIX — Intermediate

IBM's General Parallel File System (GPFS) is well known for providing high performance file service in some of the world's largest supercomputers, but also provides many benefits to the commercial customer and is included in an increasing number of IBM solutions. This session will provide an introduction to the GPFS architecture, features, terminology, licensing and implementation examples for the latest release of GPFS.

pSE39 Working with MPIO, SDDPCM, SDD and SAN boot

Lecture: John Hock
Power — Intermediate

This session will explain multi-path IO architecture and will discuss planning and implementation considerations for various multi-path vendor offerings. SAN boot considerations will also be reviewed.

pSE81 Choosing disk storage for IBM i

Lecture: Sue Baker
IBM i — Intermediate

What needs to be considered to determine which type of disk storage is "right" for your IBM i environment? Do you want to have IBM i play with a SAN-box? Is SAN disk storage a better choice for you than integrated storage? Should you virtualize your disk storage? This session will help you understand the factors involved in designing a disk storage subsystem for various objectives and compare integrated and external disk requirements for configuration, environmentals, and management.

pSE82 Power Systems Storage Tips and Tricks for IBM Storage

Lecture: Susan Schreitmueller/Chuck Laing
Storage — Intermediate

"This session is designed to highlight the 3Ts for IBM Storage and System P: The top ten things to know about: Performance, Design, Troubleshooting.

It will cover an overview of IBM Storage XIV, DS7000, DS8K and tiered storage basics along with the basics of good storage layout and design. We will present a flowchart designed to guide decisions about storage tiers."

pSE83 Storage Trends and Directors for Power Systems

Lecture: Susan Schreitmueller/Brian Sherman

Storage — Basic

This session is intended to provide a technical overview of IBM's storage roadmap. After an initial overview of industry trends and positioning of the IBM storage line, the presenter will review IBM's storage offerings' roadmaps including DS8K, SVC, midrange DS, SONAS, Proctectier, tape and XIV. There will also be a discussion of Storage Cloud solution's.

Follow the latest conference updates on
Twitter or Facebook.

 twitter



Tell us about your experience

Share your photos

View our videos and photos

Ask questions

Get connected!

twitter.com/IBMTechConfs (Use #ibmtechu)

or "like" us on

facebook.com/IBMSLST4me

Power Systems By-Track Agenda and Abstracts

Solutions

Wednesday	Room	ID	Title	Speaker(s)	Repeat
10:30 AM	Lake George A	pSS14	IBM & SAP & Oracle Optimal Filesystem Layout	Damir Rubic	Thu 10:30
10:30 AM	Lake Monroe B	pSS19	Powering up analytics with the IBM Smart Analytics System	Doug Mack	Thu 10:30
10:30 AM	Lake Nona B	pSS71	OPEN LAB: DBA Tools for IBM i	Robert Andrews	Fri 10:30
2:30 PM	Lake George A	pSS15	Oracle and AIX tuning	Damir Rubic	Thu 2:30
4:15 PM	Lake Hart B	pSS70	DB2 for IBM i Advanced SQL	Robert Andrews	Thu 2:30
Thursday					
10:30 AM	Lake George A	pSS14	IBM & SAP & Oracle Optimal Filesystem Layout	Damir Rubic	Wed 10:30
10:30 AM	Lake Monroe B	pSS19	Powering up analytics with the IBM Smart Analytics System	Doug Mack	Wed 10:30
10:30 AM	Lake Mizell B	pSS58	Overview and analysis of database HA solutions for SAP on Power Systems	Nelson Orengo	
1:00 PM	Lake Concord A	pSS68	Expanding DB2 Web Query for i	Robert Andrews	Thu 4:15
2:30 PM	Lake George A	pSS15	Oracle and AIX tuning	Damir Rubic	Wed 2:30
2:30 PM	Lake Nona B	pSS59	Architectural choices for running SAP on Power Systems with AIX or Linux	Nelson Orengo	
2:30 PM	Lake Concord A	pSS70	DB2 for IBM i Advanced SQL	Robert Andrews	Wed 4:15
4:15 PM	Lake Concord A	pSS68	Expanding DB2 Web Query for i	Robert Andrews	Thu 1:00
Friday					
10:30 AM	Lake Nona B	pSS71	OPEN LAB: DBA Tools for IBM i	Robert Andrews	Wed 10:30

pSS14 IBM & SAP & Oracle Optimal Filesystem Layout

Lecture: Damir Rubic

AIX — Intermediate

Presentation providing the overview of the configuration and tuning steps required for the optimal file system setup built on IBM Storage, AIX and Oracle RDBMS building blocks.

pSS15 Oracle and AIX tuning

Lecture: Damir Rubic

AIX — Intermediate

This presentation is intended for IBM Power Systems customers, IBM Technical Sales Specialists, and consultants who are interested in learning more the requirements involved in building and tuning an Oracle RDBMS system for optimal performance on the AIX platform. It contains best practices which have been collected during the extensive period of time my team colleagues and I have spent working in the Oracle RDBMS based environment. It is primarily focused on the AIX versions 5.3 & 6.1 and Oracle 9i, 10g and 11g.

pSS19 Powering up analytics with the IBM Smart Analytics System

Lecture: Doug Mack

AIX — Intermediate

In today's economic climate, analyzing data to understand business drivers and profitability has never been more important. IBM is meeting the challenge of large scale data warehousing and business intelligence with the IBM Smart Analytics System. Leveraging Power Systems and leading edge InfoSphere and Cognos software, this session will cover this workload optimized system, its components, and how you can eliminate months of systems integration work to improve time to value of any data warehouse or BI project.

pSS58 Overview and analysis of database HA solutions for SAP on Power Systems

Lecture: Nelson Orengo

AIX — Basic

Discussion of available solutions for Oracle, DB2 and MaxDB (Livecache only) for SAP high availability on AIX and Linux on Power. Includes an analysis of the pros and cons of solutions.

pSS59 Architectural choices for running SAP on Power Systems with AIX or Linux

Lecture: Nelson Orengo

AIX — Basic

Power Systems provide several architectural options for deploying SAP applications. The session will discuss the available options and the pros and cons of each approach from a technical, cost, and customer environment perspectives.

pSS68 Expanding DB2 Web Query for i

Lecture: Robert Andrews

IBM i — Advanced

This session will explore some of the more interesting uses for DB2 Web Query. We will show how to integrate images and documents into your reports, incorporate internet-style searching with DB2 OmniFind, pull in remote data sources and access existing web services. Finally, we will show you how to put DB2 Web Query reports anywhere - on your intranet site, in your web-based or PC-based application, or even into external web offerings like Google Maps (tm) mapping service. A demo of some of these tools will be included. Questions will be entertained throughout the session.

pSS70 DB2 for IBM i Advanced SQL

Lecture: Robert Andrews

IBM i — Advanced

SQL is a very powerful language for accessing and manipulating data. In this session we will explore some of the more advanced SQL concepts and their uses in “set at a time” processing. The list includes VIEWS, sub queries, common table expressions and derived tables. The session will also promote performance analysis using IBM i tools and indexing for development, testing, analysis, and tuning of those advanced features.

pSS71 OPEN LAB: DBA Tools for IBM i

Lab: Robert Andrews

IBM i — Intermediate

This is a work-at-your-own-pace System i Navigator lab, modules include

1. Getting Started with System i Navigator
2. Tables and Indexes
3. Perfect Indexes
4. SQL Performance Monitors
5. Temporary Data Structures
6. SQL Query Engine Plan Cache
7. QAQQINI and Look Ahead Predicate Generation

Systems Management

Wednesday	Room	ID	Title	Speaker(s)	Repeat
1:00 PM	Lake Concord B	pST40	New Tools for managing IBM i	Keith Zblewski	
1:00 PM	Lake Hart B	pST08	IBM Systems Director for Power Systems	Bob Padzieski	Fri 9:00
2:30 PM	Lake Nona B	pST41	Performance Data Investigator Lab	Keith Zblewski	
4:15 PM	Lake Concord A	pST17	BRMS on IBM i Overview - What Does It Do and How Do I Implement It?	Debbie Saugen	
4:15 PM	Lake Nona A	pST09	IBM Systems Director for Power Systems - Basic Lab	Bob Padzieski	Thu 2:30
Thursday					
9:00 AM	Lake Monroe A	pST10	IBM Systems Director Active Energy Manager and Power Systems	Bob Padzieski	Fri 1:00
2:30 PM	Lake Nona A	pST09	IBM Systems Director for Power Systems - Basic Lab	Bob Padzieski	Wed 4:15
Friday					
9:00 AM	Lake Monroe B	pST25	Managing Power Systems virtualization with Systems Director VMControl	Glen Corneau	Fri 1:00
9:00 AM	Lake George A	pST08	IBM Systems Director for Power Systems	Bob Padzieski	Wed 1:00
1:00 PM	Lake Monroe B	pST25	Managing Power Systems virtualization with Systems Director VMControl	Glen Corneau	Fri 9:00
1:00 PM	Lake George A	pST10	IBM Systems Director Active Energy Manager and Power Systems	Bob Padzieski	Thu 9:00

pST08 IBM Systems Director for Power Systems

Lecture: Bob Padzieski

Power — Intermediate

IBM Systems Director is the framework for a wide range of management tools for IBM. It provides a single interface for managing hardware, firmware, software, storage, networks, virtualization and energy. This session will show the user interface for many of the base functions in a Power Systems environment. It will discuss how the product can be extended using plug-ins, and explain the structure of the Editions offerings.

pST09 IBM Systems Director for Power Systems - Basic Lab

Lab: Bob Padzieski

Power — Intermediate

This lab will allow the user to explore many of the basic IBM Systems Director management functions:

- Discovery and inventory
- Power System management
- Static and dynamic groups
- Monitors & Thresholds
- Automation plans
- User access management
- Dashboards
- Health Summary, Navigation, Topology maps
- Update management and compliance policies
- Virtualization

pST10 IBM Systems Director Active Energy Manager and Power Systems

Lecture: Bob Padzieski

Power — Intermediate

Active Energy Manager is a plug-in for IBM System Director that is used to monitor and manage the power and cooling needs of IBM servers and other data center resources. This session will discuss many of the energy functions built into the POWER6 and POWER7 processor-based systems. It will present the Active Energy Management interfaces and functions that work with Power Systems, as well as the correlation of cooling equipment with IT equipment, and power management using a PDU+. Finally, it will show how the energy functions can be managed with IBM System Director automation plans.

pST17 BRMS on IBM i Overview - What Does It Do and How Do I Implement It?

Lecture: Debbie Saugen

IBM i — Basic

Backup Recovery and Media Services (BRMS) is IBM's strategic product for managing your IBM i backup/recovery environment along with your media to ensure the safety of your data. BRMS helps you implement and automate your backup strategies, tracks your media, and guides your recoveries. BRMS is also the premiere Hierarchical Storage Management (HSM) solution allowing data archive and dynamic retrieval to and from tape. Come to this session for an overview of the BRMS functions. Learn how to install the product, how to set up simple BRMS operations, and how to review the BRMS reports to ensure all backups ran successfully. All the new and exciting BRMS enhancements in the latest releases will also be covered.

pST25 Managing Power Systems virtualization with Systems Director VMControl

Lecture: Glen Corneau

AIX — Intermediate

IBM Systems Director VMControl (VMControl) is a plug-in to IBM Systems Director that enhances the capabilities in the base IBM Systems Director product. This session will provide an overview of all three Editions of IBM Systems Director VMControl including features and functions, definitions, important pre-requisites and use cases.

pST40 New Tools for managing IBM i

Lecture: Keith Zblewski

IBM i — Intermediate

Several new functions have been added to IBM i recently allowing to manage Power Systems, helping with virtualization, setup and hosting IBM i partitions and many others. We will discuss and demonstrate how to use those new tools effectively. IBM Systems Director Navigator for IBM i, is a browser based Web console and built right into the operating system. Just point your browser to the 2001 port of your IBM i to launch this new Web console. This console contains over 300 Web enabled IBM i functions! Much of what previously was found in System i Navigator has been included, along with some new functions only available in this Web console.

pST41 Performance Data Investigator Lab

Lab: Keith Zblewski

IBM i — Intermediate

IBM i 6.1 and 7.1 deliver major enhancements for managing and analyzing i performance data. The IBM Systems Director Navigator for i has a new “Performance” task that includes many traditional i performance tasks. It also has the ability to manage your performance collections. However, the most exciting feature is the “Investigate Data” task, which provides the ability to graphically view your i performance data; Collection Services, Disk Watcher, and Job Watcher data can all be ‘investigated’ through this interface. This hands-on lab will cover the major features of the “Investigate Data” task.

Power Systems By-Track Agenda and Abstracts

Security

Thursday	Room	ID	Title	Speaker(s)	Repeat
9:00 AM	Lake Hart B	pSY37	What's new in 6.1 & 7.1 Security	Jeff Uehling	
2:30 PM	Lake Hart B	pSY38	Security - Best Practices	Jeff Uehling	
Friday					
9:00 AM	Lake Nona A	pSY85	AIX Security	Ted Sullivan	

pSY37 What's new in 6.1 & 7.1 Security

Lecture: Jeff Uehling

IBM i — Intermediate

This presentation will cover the wide range of security enhancements added by IBM in the 6.1 & 7.1 operating system releases. These enhancements include the ability to encrypt data on media (tape and virtual tape) and on disk, new intrusion detection and prevention enhancements along with a number of additional system integrity, audit and compliance related changes that are available for all customers.

pSY38 Security - Best Practices

Lecture: Jeff Uehling

IBM i — Intermediate

This presentation will cover the best practices necessary to security your IBM i server. The presentation will discuss why you need to run at security level 50, including examples of security exposures that exist at the lower security levels, how to detect and prevent programs that could compromise security on your system, necessary system value settings and security recommendations when developing applications. If you are a system administrator or system security officer, this session is a must for you to attend.

pSY85 AIX Security

Lab: Ted Sullivan

AIX — Intermediate

This lab exercise will introduce you to the the following Security Features of AIX: Role Based Access Control, Long Passwords, Encrypted File Systems, Trusted Execution, and AIXPert.

Power Systems By-Track Agenda and Abstracts

Virtualization

Wednesday	Room	ID	Title	Speaker(s)	Repeat
10:30 AM	Lake Monroe A	pVN65	NPIV - Power Implementation in a Live Partition Mobility (LPM) environment	Richard Bleistein	Thu 4:15
10:30 AM	Lake Nona A	pVN84	Live Partition Mobility	Ted Sullivan	Thu 4:15
10:30 AM	Lake Mizell B	pVN89	Deploying the POWER7 Based Blade with BladeCenter Open Fabric Manager	Trina Bunting	Thu 1:00
1:00 PM	Lake Monroe A	pVN27	Partition Suspend/Resume and other new features with VIO 2.2 Fixpack 24	James Nash	Fri 10:30
2:30 PM	Lake Down B	pVN23	VIOS in Action with IBM i	Gary Konicek	Thu 10:30
2:30 PM	Lake Hart B	pVN36	Linux for Power Virtualization and Emerging Technologies	Jeff Scheel	Thu 4:15
2:30 PM	Lake Monroe B	pVN29	Cloud 101	Jaqui Lynch	Fri 10:30
4:15 PM	Lake Monroe A	pVN28	VIO: Beyond the Basics	James Nash	Fri 1:00

Thursday

9:00 AM	Lake Nona B	pVN66	POWER7 - Partiton Suspend/Resume and Hypervisor Memory Mirroring	Richard Bleistein	Fri 10:30
9:00 AM	Lake Nona A	pVN86	Configuring NPIV on Power systems	Ted Sullivan	Fri 1:00
10:30 AM	Lake Monroe A	pVN26	Working with Virtual Networks	James Nash	
10:30 AM	Lake Hart A	pVN23	VIOS in Action with IBM i	Gary Konicek	Wed 2:30
1:00 PM	Lake Nona B	pVN89	Deploying the POWER7 Based Blade with BladeCenter Open Fabric Manager	Trina Bunting	Wed 10:30
2:30 PM	Lake Monroe A	pVN52	IBM Workload Partitions for AIX (WPAR) & Workload Partitions Manager	Mehboob Mithaiwala	Fri 9:00
4:15 PM	Lake George A	pVN53	DEMO: Managing AIX Workload Partitions (WPARs)	Mehboob Mithaiwala	Fri 10:30
4:15 PM	Lake Concord B	pVN65	NPIV - Power Implementation in a Live Partition Mobility (LPM) environment	Richard Bleistein	Wed 10:30
4:15 PM	Lake Nona A	pVN84	Live Partition Mobility	Ted Sullivan	Wed 10:30
4:15 PM	Lake Hart B	pVN36	Linux for Power Virtualization and Emerging Technologies	Jeff Scheel	Wed 2:30

Friday

9:00 AM	Lake Monroe A	pVN52	IBM Workload Partitions for AIX (WPAR) & Workload Partitions Manager	Mehboob Mithaiwala	Thu 2:30
10:30 AM	Lake Down A	pVN27	Partition Suspend/Resume and other new features with VIO 2.2 Fixpack 24	James Nash	Wed 1:00
10:30 AM	Lake Mizell B	pVN53	DEMO: Managing AIX Workload Partitions (WPARs)	Mehboob Mithaiwala	Thu 4:15
10:30 AM	Lake Concord A	pVN66	POWER7 - Partiton Suspend/Resume and Hypervisor Memory Mirroring	Richard Bleistein	Thu 9:00
10:30 AM	Lake Monroe A	pVN29	Cloud 101	Jaqui Lynch	Wed 2:30
1:00 PM	Lake Down A	pVN28	VIO: Beyond the Basics	James Nash	Wed 4:15
1:00 PM	Lake Nona A	pVN86	Configuring NPIV on Power systems	Ted Sullivan	Thu 9:00

pVN23 VIOS in Action with IBM i

Demo: Gary Konicek

IBM i — Intermediate

Many of the current virtualization functions are provided by PowerVM and virtual I/O server (VIOS) enhancements. This session will explore the virtualization enhancements that have been added in the recent releases and how they work with the POWER6 / POWER7 hardware platforms and IBM i.

pVN26 Working with Virtual Networks

Lecture: James Nash

AIX — Intermediate

Sample configurations showing options available using virtual networks. More details on VLAN tagging and multiple virtual switch support.

pVN27 Partition Suspend/Resume and other new features with VIO 2.2 Fixpack 24

Lecture: James Nash

AIX — Intermediate

Discussions of the new features that were introduced with VIO 2.2 fixpack 24.

- Partition Suspend/Resume
- Enhancements to virtual storage, including shared storage pools, thin provisioning, and VIOS storage grouping
- Enhancements to virtual networking

pVN28 VIO: Beyond the Basics

Lecture: James Nash

AIX — Intermediate

Session will provide a deeper look into ways to better use features such as Virtual Networks, Live Partition Mobility, and N_Port Id Virtualization (NPIV).

pVN29 Cloud 101

Lecture: Jaqui Lynch
Power — Intermediate

The latest buzzword is cloud computing - you hear it everywhere and everyone wants one. But do you know what it is? And how to best use one in your company. This session will provide an introduction to cloud computing and provide some examples and ideas on how cloud computing might be of value to your company.

pVN36 Linux for Power Virtualization and Emerging Technologies

Lecture: Jeff Scheel
Linux — Intermediate

PowerVM provides a rich set of virtualization capabilities that exploit the superior architecture of Power. This session takes a technical deep dive into how to exploit the advanced capabilities of PowerVM on Linux for Power for the most popular use cases including consolidation of x86 workloads and dynamic resource management using features like Live Partition Mobility and VMControl. In addition, learn more about the new virtualization technologies supporting features like Linux containers (WPARs) that will be coming to Linux for Power.

pVN52 IBM Workload Partitions for AIX (WPAR) & Workload Partitions Manager

Lecture: Mehboob Mithaiwala
AIX — Intermediate

The most popular innovation of IBM AIX 6.1 is clearly workload partitioning (WPARs). Now, with AIX 7.1 there is support for AIX 5.2 WPARs for AIX7. OS virtualization through WPAR technology allows for granular approach of resource management. Once you get past the marketing hype, you'll need to determine the value that WPARs can provide. What can WPARs do that LPARs could not? How, and when should you use WPARs? WPAR Manager is an advanced manager for IBM Systems Director that provides a centralized point of control for managing WPARs and enables live application mobility. This session will cover all these topics and provide hints on installing and configuring WPAR Manager.

pVN53 DEMO: Managing AIX Workload Partitions (WPARs)

Demo: Mehboob Mithaiwala
AIX — Intermediate

WPARs are a bold new innovation, implemented within AIX 6.1 and AIX 7.1. Attend this demonstration session to understand how easy it is to create, configure, and administer workload partitions using AIX command line, through SMIT, and WPAR Manager GUI. WPAR Manager also enables Live Application Mobility, which allows you to relocate a WPAR to another system without restarting the application or causing significant impact to the application users. This session assumes you attended "Workload Partitions for AIX (WPAR) & Workload Partitions Manager".

pVN65 NPIV - Power Implementation in a Live Partition Mobility (LPM) environment

Lecture: Richard Bleistein
AIX — Intermediate

Configuration and Tuning of 8G (NPIV) and 10G (FCoE) adapters in relation to NPIV technology in a PowerVM environment. Implementation of NPIV technology with Live Partition Mobility. Session consists of Lecture, Powerpoints and Demonstration video clips.

pVN66 POWER7 - Partiton Suspend/Resume and Hypervisor Memory Mirroring

Lecture: Richard Bleistein
AIX — Intermediate

Implementing PowerVM Partition Suspension and Resumption with Live Partition Mobility. Introduction to Hypervisor Memory Mirroring configuration and monitoring. Session consists of Lecture, Powerpoints and Demonstration clips

pVN84 Live Partition Mobility

Lab: Ted Sullivan
AIX — Intermediate

In this lab exercise, you will learn how to move a "running" partition to a different managed system. This exercise is useful for a person who wants to see how to eliminate downtime if a managed system must be restarted.

pVN86 Configuring NPIV on Power systems

Lab: Ted Sullivan
AIX — Intermediate

In this lab exercise, you will learn how you can virtualize the fibre channel adapter. This exercise is useful for a person who wants to reduce the number of fibre channel adapters that are required.

pVN89 Deploying the POWER7 Based Blade with BladeCenter Open Fabric Manager

Lecture: Trina Bunting
Power — Intermediate

In this session we learn how to use BladeCenter Open Fabric Manager (BOFM) to deploy POWER7 based Blades. We discuss the differences between Basic and Advanced BOFM as well as how to configure BOFM on the AMM and a stand-alone server. We also learn how to configure some of the features of BOFM including RIP & Replace and automatic failover.

Power Systems By-Track Agenda and Abstracts

What's New?

Wednesday	Room	ID	Title	Speaker(s)	Repeat
10:30 AM	Lake Down A	pWW31	AIX Trends and Directions	Jay Kruemcke	Thu 10:30
10:30 AM	Lake Down B	pWW78	IBM i Trends and Directions	Steve Will	Thu 9:00
10:30 AM	Lake Concord B	pWW35	Linux for Power Trends and Directions	Jeff Scheel	Thu 2:30
10:30 AM	Lake Hart A	pWW34	IBM System Networking Strategy - A Smarter Network for a Smarter Planet	Jeff Currier	
10:30 AM	Lake George B	pWW60	Power Systems Update	Pat O'Rourke	
1:00 PM	Lake Down A	pWW87	IBM i 6.1 and 7.1 Technical Overview	Tracy Smith	Thu 9:00
1:00 PM	Lake George B	pWW49	Power 710/720/730/740 DeepDive	Mark Olson	Thu 9:00
2:30 PM	Lake Hart A	pWW69	What's new in DB2 for IBM i	Doug Mack	Thu 9:00
2:30 PM	Lake George B	pWW63	POWER7 750 / 770 / 780 Deep Dive	Pat O'Rourke	Fri 9:00
2:30 PM	Lake Mizell B	pWW74	Deduplication - It's not Magic, it's Math!	Ron Herrmann	
4:15 PM	Lake Monroe B	pWW42	CloudBurst on Power Deep Dive	Kyle Wurgler	Thu 1:00
4:15 PM	Lake Down B	pWW04	Installation Options for IBM i on Power Systems	Allyn Walsh	Fri 9:00
4:15 PM	Lake George B	pWW64	Hardware / System Management for Power Systems	Pat O'Rourke & Chris Eisenmann	Thu 4:15

Thursday

9:00 AM	Lake George A	pWW91	AIX Profile Manager	Vandana Mallempati	
9:00 AM	Lake Monroe B	pWW69	What's new in DB2 for IBM i	Doug Mack	Wed 2:30
9:00 AM	Lake Down B	pWW78	IBM i Trends and Directions	Steve Will	Wed 10:30
9:00 AM	Lake Hart A	pWW87	IBM i 6.1 and 7.1 Technical Overview	Tracy Smith	Wed 1:00
9:00 AM	Lake Down A	pWW49	Power 710/720/730/740 DeepDive	Mark Olson	Wed 1:00
9:00 AM	Lake George B	pWW61	POWER7 795 Deep Dive	Pat O'Rourke	Fri 1:00
10:30 AM	Lake George B	pWW31	AIX Trends and Directions	Jay Kruemcke	Wed 10:30
10:30 AM	Lake Hart B	pWW22	Advanced Networking for IBM i using VIOS	Fant Steele	Fri 9:00
10:30 AM	Lake Concord A	pWW67	Experience DB2 Web Query for i	Doug Mack	Fri 9:00
1:00 PM	Lake Monroe A	pWW42	CloudBurst on Power Deep Dive	Kyle Wurgler	Wed 4:15
1:00 PM	Lake Hart A	pWW50	Solid State Drives Aren't the Future - They're the Present	Mark Olson	
1:00 PM	Lake George B	pWW62	Power Systems IO Update	Pat O'Rourke	Fri 10:30
2:30 PM	Lake Mizell B	pWW35	Linux for Power Trends and Directions	Jeff Scheel	Wed 10:30
2:30 PM	Lake George B	pWW73	VIOS Shared Storage Pools (was called NextGen)	Ron Barker	Fri 10:30
4:15 PM	Lake Monroe A	pWW43	CloudBurst on Power and VMControl Demo	Kyle Wurgler	Fri 10:30
4:15 PM	Lake George B	pWW48	Hot Off the Press: Very Recent 2011 Announcements	Mark Olson	
4:15 PM	Lake Down A	pWW64	Hardware / System Management for Power Systems	Pat O'Rourke & Chris Eisenmann	Wed 4:15

Friday

9:00 AM	Lake Hart A	pWW04	Installation Options for IBM i on Power Systems	Allyn Walsh	Wed 4:15
9:00 AM	Lake Hart B	pWW22	Advanced Networking for IBM i using VIOS	Fant Steele	Thu 10:30
9:00 AM	Lake Down B	pWW67	Experience DB2 Web Query for i	Doug Mack	Thu 10:30
9:00 AM	Lake Concord B	pWW51	POWER7 Capacity on Demand	Mark Olson	
9:00 AM	Lake George B	pWW63	POWER7 750 / 770 / 780 Deep Dive	Pat O'Rourke	Wed 2:30
10:30 AM	Lake Monroe B	pWW43	CloudBurst on Power and VMControl Demo	Kyle Wurgler	Thu 4:15
10:30 AM	Lake George B	pWW62	Power Systems IO Update	Pat O'Rourke	Thu 1:00
10:30 AM	Lake Down B	pWW73	VIOS Shared Storage Pools (was called NextGen)	Ron Barker	Thu 2:30
1:00 PM	Lake George B	pWW61	POWER7 795 Deep Dive	Pat O'Rourke	Thu 9:00

pWW04 Installation Options for IBM i on Power Systems

Lecture: Allyn Walsh
IBM i — Advanced

This session will review all the options for installing or upgrading your IBM i V6R1 or V7R1 on a Power Systems server. This includes traditional methods with emphasis on using new options using virtual image catalog on same server frame over VSCSI, or server to server using NFS back optical over a LAN or WAN.

pWW22 Advanced Networking for IBM i using VIOS

Lecture: Fant Steele
IBM i — Intermediate

There are many options available for connecting Logical Partitions (LPAR) to the network. As the number of LPARs on a system grows it becomes more attractive and necessary to use virtualization to support communications. In this session we will explore the options available to connect networking to the LPARs. This will include the Integrated Virtual Ethernet (IVE / HEA), Shared Ethernet Adapters (SEA) through VIOS and Virtual Ethernet with Proxy ARP through IBM i. We will discuss how these options can be used to provide connectivity to LAN Console for IBM i.

pWW31 AIX Trends and Directions

Lecture: Jay Kruemcke
AIX — Intermediate

Learn about AIX 7 as well as new capabilities coming for AIX in the future.

pWW34 IBM System Networking Strategy - A Smarter Network for a Smarter Planet

Lecture: Jeff Currier
Net — Intermediate

- Current challenges facing IT Leaders today in the Data center
- Major elements our clients need to include in their Data center Strategies to address today's challenges
- Positioning IBM as being focused on Smarter Data center Networking and addressing today's and tomorrow's challenges
- A statement of IBM Strategy in the Data center
- Value Prop -- Unmatched Choice, Simplicity and Expertise
- Advantages of IBM's Smarter Data center Networks
- Why IBM and BNT?
- What Analysts are saying
- Key Points to Take Away

pWW35 Linux for Power Trends and Directions

Lecture: Jeff Scheel
Linux — Intermediate

New initiatives are underway around Linux for Power. This session will focus on the most recent Linux on Power7 announcements along with new announcements planned that will make Power and the Power software and server ecosystem an even more viable alternative to x86 Linux. This session will provide the technical details behind the key Linux differentiators for the current and new POWER Systems focused exclusively on competing with x86 Linux. Attend this session to gain a greater appreciation for the new POWER Systems and the features exploited by Linux that deliver superior value to running the workload on commodity hardware.

pWW42 CloudBurst on Power Deep Dive

Lecture: Kyle Wurgler
AIX — Intermediate

What is the CloudBurst on Power integrated cloud offering? How does it benefit my IT environment, and how would I order and use it? What are the technical details behind the solution? Join us in this technical session and learn the value and architecture of CloudBurst on Power.

pWW43 CloudBurst on Power and VMControl Demo

Lecture: Kyle Wurgler
AIX — Intermediate

You are interested in cloud computing on Power Systems and would like to see IBM's solutions in operation. Join us for this in-depth technical demonstration of CloudBurst on Power and the latest VMControl enhancements.

pWW48 Hot Off the Press: Very Recent 2011 Announcements

Lecture: Mark Olson
Power — Intermediate

IBM Power Systems has just this month made introduced a number of new system hardware enhancements and I/O enhancements. Come hear about the latest news and how these enhancements can help you in your business.

pWW49 Power 710/720/730/740 DeepDive

Lecture: Mark Olson
Power — Intermediate

This session provides an in depth look into the 2U Power 710/730 and 4U Power 720/740 which were just introduced in late 2010. This session focuses on their server technology, offering structure, editions, memory, architecture, activations, expansion options, key I/O, configuration options/trade-offs, operating environments, 720 upgrades and much more are covered. This is a great session for those who deal with selecting the right Power System and ensuring the right equipment to meet the business needs is used. This session covers the 710-740 in an AIX, IBM i and Linux environment.

pWW50 Solid State Drives Aren't the Future - They're the Present

Lecture: Mark Olson
Power — Intermediate

Solid State Drives or flash technology has arrived. IBM now provides the enterprise class technology with the reliability and performance needed for POWER7 and POWER6 servers. This session explores the PCIe-based SSD and SAS-bay-based SSD options ordered as part of Power System. It focuses on the why, when, where, and how of this game-changing I/O technology and provides the latest updates on recent product updates.

Power Systems By-Track Agenda and Abstracts

pWW51 POWER7 Capacity on Demand

Lecture: Mark Olson

Power — Intermediate

Why pay for something before you need it? But how do you do that plus give yourself the ability to quickly and easily add server resource if needed? In today's dynamic world, flexibility is a key advantage. This session dives into how IBM's Capacity on Demand offerings really works for the POWER7 770/780/795 and POWER6 Model 570/595 processors and memory. The session digs down to really understand how CoD is ordered, used, billed and paid for. Topics include temporary and permanent activations of processors and memory, contractual requirements, pre-pay or post-pay, trial capacity, how to enable, and more.

pWW60 Power Systems Update

Lecture: Pat O'Rourke

Power — Intermediate

This session provides a detailed overview of the POWER7 processor architecture and product offerings utilizing the POWER7 processor. Information regarding the processor architecture, core offerings, SMT4, Turbo Mode, Processor Modes, Energy Management capabilities, will be discussed. An overview of the POWER7 product family, Blades through the POWER7 795 high-end system will be covered.

pWW61 POWER7 795 Deep Dive

Lecture: Pat O'Rourke

Power — Intermediate

A deep dive of the Power 795 architecture will be presented. The Power 795 system design, packaging, IO characteristics, Concurrent services options, upgrade options performance characteristics will be covered.

pWW62 Power Systems IO Update

Lecture: Pat O'Rourke

Power — Intermediate

The Power Systems IO session will review IO options and considerations for the full family of POWER7 servers, Blades through the Power 795. The session will review adapter considerations, IO buses, IO drawers, and system options

pWW63 POWER7 750 / 770 / 780 Deep Dive

Lecture: Pat O'Rourke

Power — Intermediate

This session provides a deep dive into the innovative architecture of the Power 750 / 770 / 780. The system architecture design, packaging, IO characteristics, Concurrent services options, upgrade options performance characteristics will be covered

pWW64 Hardware / System Management for Power Systems

Lecture: Pat O'Rourke & Chris Eisenmann

Power — Intermediate

This session provides an update of the Hardware Management Console and Integrated Virtualization Manager offerings. Server management is a key focus area for IBM in 2011.

pWW67 Experience DB2 Web Query for i

Lecture: Doug Mack

IBM i — Basic

This session is designed for those who would like a modern query and reporting tool to deliver timely and quality reports, graphs, and dashboards to meet the reporting requirements of their company. This session introduces DB2 Web Query for IBM i, the strategic query and reporting tool for the IBM i operating system. A demo of the end user experience with DB2 Web Query will be included. Questions will be entertained throughout the session.

pWW69 What's new in DB2 for IBM i

Lecture: Doug Mack

IBM i — Intermediate

Come and find out how the DB2 for IBM i features can help your IBM i databases and applications take a giant leap forward. You will learn how these new DB2 for IBM i features such as XML support, Global Variables, and Array Support in Routines can be used to improve your applications and to reduce your application development time. The new WebQuery and OmniFind support will also be covered. You will not want to miss hearing about the self-learning capabilities of the SQL Query Engine and the productivity gains delivered by the enhancements to the DB2 OnDemand Performance and Database Management tools in System i Navigator. The listed features are just a few of the exciting new DB2 for IBM i capabilities being discussed.

pWW73 VIOS Shared Storage Pools (was called NextGen)

Demo: Ron Barker

Power — Intermediate

This session will cover the concepts, the pre-reqs, the details of phase 1 functionality, the current limitations and a demonstration. The VIOS has this new exciting function that drastically reduce SAN administrator workloads and offers Thin Provisioning of SAN disk space pools. The code name of this feature was previously VIOS NextGen. Then a quick look at what MIGHT appear with a higher function later releases.

pWW74 Deduplication – It's not Magic, it's Math!

Lecture: Ron Herrmann

Storage — Intermediate

This session describes how deduplication works and identifies the pros and cons for different data types.

pWW78 IBM i Trends and Directions

Lecture: Steve Will

IBM i — Intermediate

This presentation will cover current investment strategy in IBM i and upcoming technology enhancements. Also covered will be new solutions recently delivered how IBM i will participate in industry trends such as cloud computing.

pWW87 IBM i 6.1 and 7.1 Technical Overview

Lecture: Tracy Smith

IBM i — Basic

IBM i 6.1 and 7.1 provide a wide range of significant enhancements and new functions. There are numerous enhancements and new functions that were introduced with IBM i 6.1 and IBM i 7.1. We will start with a review of what was introduced with IBM i 6.1 and that move into the latest IBM i release 7.1. We will review the new functions in the areas of virtualization, storage and availability management, breakthrough Java performance, new support for POWER6 and POWER7 processors and BladeCenter and more. Please join us if you would like to become familiar with the major IBM i 6.1 and 7.1 enhancements.

pWW91 AIX Profile Manager

Lecture: Vandana Mallempati

AIX — Intermediate

AIX Profile Manager is a program that checks/compares/configures the configurations that affect reliability, availability, serviceability, security and the kernel within each component, for multiple remote AIX systems and manages them. This session will give a brief overview of how it works, installing and using it.

System z Technical Symposium Agenda

Wednesday, April 27, 2011

7:00 AM – 8:30 AM	Breakfast — Orlando Ballroom I & II ★ Sponsored by Emulex				
7:30 AM – 5:30 PM	Registration/Information				
8:30 AM – 10:00 AM	General Session — Keynote — Orlando Ballroom III – VI Jeff Jonas — Chief Scientist, IBM Entity Analytics — IBM Distinguished Engineer Tom Rosamilia — General Manager, Power and z Systems — IBM Systems & Technology Group				
10:00 AM – 10:30 AM	Coffee Break ★ Sponsored by Juniper Networks and Novell, Inc.				
10:00 AM – 5:30 PM	Cyber Café — Lake Lucerne				
10:00 AM – 7:00 PM	Certification Testing				
10:30 AM – 11:45 AM	Orlando VI	Lake Highland A	Lake Highland B	Lake Florence A	Lake Florence B
	zTS03 IBM zEnterprise Technical Introduction <i>Harv Emery</i>		zZS08 What's New in z/OS Ver 1.13? <i>Riaz Ahmad</i>	zDB04 DB2 for z/OS: Version 10 including migration strategy for DB2 9 or DB2 10 <i>John Iczkovits</i>	zVM02 Linux on System z - Overview and Introduction <i>Hans-Joachim Picht</i>
11:45 AM – 1:00 PM	Lunch — Orlando Ballroom I & II ★ Sponsored by Brocade				
11:45 AM – 1:00 PM	Solution Center Open — Florida Ballroom				
1:15 PM – 2:15 PM	zTS04 System z Security Strategy <i>Jack Jones</i>	zES03 A Mainframe Guy Discovers Blades...as in zEnterprise "Blade" Extensions <i>Glenn Anderson</i>	zZS06 What's New in System z Software Pricing <i>Dave Chase</i>	zDB06 My manager said I need to build a data warehouse and I can't drive a forklift <i>Jeff M. Sullivan</i>	zVM08 Introduction to z/VM Virtualization <i>Bruce Hayden</i>
2:15 PM – 2:30 PM	Break				
2:30 PM – 3:45 PM	zTS05 R: Thu 4:15 zEnterprise - Workload Optimization And IT Economics <i>John J Thomas</i>	zES10 An In-Depth Look at the IBM zEnterprise 196 (z196) <i>Harv Emery</i>	zZS10 z/OS Management Facility Overview <i>Anuja Deedwaniya</i>	zDB08 IBM Smart Analytics Optimizer for DB2 for z/OS: How Does it Work? <i>Willie Favero</i>	zVM03 Linux on System z Current and Future Technologies <i>Hans-Joachim Picht</i>
3:45 PM – 4:15 PM	Coffee Break ★ Sponsored by IBM iDoctor for IBM i and IBM Systems Lab Services and Training				
4:15 PM – 5:30 PM	zTS09 System z Storage Hardware Update <i>Scott Drummond</i>	zES06 Managing a zEnterprise Ensemble with Unified Resource Manager <i>Riaz Ahmad</i>	zZS19 Parallel Sysplex Update <i>Nashir Dhondy</i>	zDB01 Performance and Scalability of DB2 10 for z/OS <i>John Iczkovits</i>	zVM10 z/VM Performance Update <i>Jon vonWolferdsdorf</i>
5:30 PM – 7:30 PM	Solution Center Reception — Florida Ballroom ★ Sponsored by Brocade				

System z Tracks and Page Reference for Abstracts

System z Technical Strategies and Architectures 111

zEnterprise System Planning and Implementation 113

z/OS and Parallel Sysplex Implementation and Performance Management 116

System z Technical Symposium Agenda



Lake Sheen B	Lake Sheen A (Lab)	S331B	S331C	S331D
		eVR01 Create new SAN and SAN extension infrastructure changes with z196 zEnterprise server and DS8800 <i>Brian Larsen, (Brocade)</i>	R: Thu 9:00 eVR03 VMware vCloud Director Technical Overview <i>Eric Hardcastle (VMware)</i>	eVR14 Best practices for optimum IT Capacity Utilization - A lean 6 sigma Approach <i>Jordi Serras Marques or Aymeric Ratel (ORSYP)</i>



zZS22 What's New in DFSMS? <i>Scott Drummond</i>	zES11 zPCR Capacity Sizing Lab - Part 1 Introduction and Overview <i>John Burg</i>	eVR17 Red Hat Enterprise Virtualization Overview <i>Andrew Cathrow</i>	R: Thu 10:30 eVR05 Building Intelligent and Scalable Data Center Networks with Cisco Systems <i>Brent Anderson (Cisco)</i>	eVR15 Improving your TCO with Enterprise SSDs <i>Esther Spanjer (Smart Technologies)</i>
---	---	---	---	---

zZS01 z/OS Communications Server - technical update including z/OS V1R13 enhancements <i>Alfred B Christensen</i>	zES12 zPCR Capacity Sizing Lab - Part 2 Hands On Lab <i>John Burg</i>	R: Thu 1:00 eVR02 Create new SAN and SAN extension infrastructure changes with Power Server and DS8800 <i>Craig Nelson, Howard Johnson (Brocade)</i>	eVR06 Novell Session 1 <i>TBD</i>	eVR16 How do I plan for End of Support of ESCON I/O on the next System z platform? <i>Sean Seitz, Michael Dailey (Optica)</i>
--	--	---	--	--

zZS05 System z EC/Sysplex SW Pricing Overview <i>Dave Chase</i>	zZS16 Implementing z/OS LDAP Server 1.12 with RACF and DB2 - Hands-on Lab <i>Jack Jones</i>	eVR09 Improve availability, manageability & reduce cost in a virtualized environment with Rack and Power solutions <i>Patrick Giangrosso, George Correira</i>	R: Thu 1:00 eVR08 Revolutionizing IBM I/O <i>Tom Boucher (Emulex)</i>
--	--	--	--



System z Tracks and Page Reference for Abstracts

DB2 for z/OS BI and the IBM Smart Analytics Optimizer 120	Virtualization z/VM and Linux on System z 122	Vendor Sessions 60
---	---	------------------------------

System z Agenda

Thursday, April 28, 2011

7:00 AM – 9:00 AM	Breakfast — Orlando Ballroom I & II ★ Sponsored by Cisco Systems				
7:30 AM – 5:30 PM	Registration/Information				
7:30 AM – 5:30 PM	Cyber Café — Lake Lucerne				
8:00 AM – 6:00 PM	Certification Testing				
9:00 AM – 10:15 AM	Orlando VI	Lake Highland A	Lake Highland B	Lake Florence A	Lake Florence B
	zTS02 A Mainframe Guy is Thinking About Cloud Computing <i>Glenn Anderson</i>	zES07 zBX Hardware Overview <i>Greg Hutchison</i>	zZS11 z/OS Management Facility Implementation and Configuration <i>Anuja Deedwaniya</i>	zDB02 R: Fri 10:30 IBM Smart Analytics Optimizer Implementation Experiences <i>Javier Chavez</i>	zVM01 Linux on System z: A Security Point of View <i>Jack Jones</i>
10:15 AM – 10:30 AM	Coffee Break ★ Sponsored by IBM DDS6/DAT160 Tape Drive, IBM Storage Division and ORSYN Software				
10:30 AM – 11:45 AM	zTS08 R: Fri 10:30 zEnterprise LIVE DEMO: Implementing Business Apps on a z196 and zBX Infrastructure <i>Marie-Line Reynier, Mitch Green</i>	zES14 R: Fri 1:00 Understanding WebSphere DataPower Integration Appliance for zEnterprise <i>Theresa Tai</i>	zZS04 Understanding IBM's LSPRs, MIPS, and Processor Sizing <i>Peter Enrico</i>	zDB05 DB2 Performance Tuning: Where Do We Start <i>Jeff M. Sullivan</i>	zVM11 A zEnterprise look at managing z/VM and Linux for System z and either as part of the ensemble or as a stand alone system <i>Mike Sine</i>
11:45 AM – 1:00 PM	Lunch — Orlando Ballroom I & II ★ Sponsored by Brocade				
11:45 AM – 1:00 PM	Solution Center Open — Florida Ballroom				
1:00 PM – 2:15 PM	zTS01 R: Fri 1:00 Transformational Business Analytics on System z <i>Caryn Meyers, Alan Meyer</i>	zES01 zEnterprise System - network architecture and virtualization overview (Part 1) <i>Alfred B Christensen</i>	zZS18 z/OS Performance "Hot" Topics <i>Kathy Walsh</i>	zDB07 DB2 Performance with the IBM DS8800 Storage System <i>Victor T. Peltz</i>	zVM04 z/VM Platform Update: z/VM V6.1 and Statements of Direction <i>Bruce Hayden</i>
2:15 PM – 2:30 PM	Break				
2:30 PM – 3:45 PM	zTS06 R: Fri 9:00 End-to-End Software Delivery for the zEnterprise End-to-End Platform <i>Jeff Miller</i>	zES02 zEnterprise System - z/OS IEDN network design and implementation (Part 2) <i>Alfred B Christensen</i>	zZS03 Exploring the SMF 113 Processor Cache Counters and LSPRs <i>Peter Enrico</i>	zDB09 DB2 Parallelism 2011: Busting the Myths <i>Willie Favero</i>	zVM05 z/VM Single System Image and Guest Mobility Preview <i>Richard Lewis</i>
3:45 PM – 4:15 PM	Coffee Break ★ Sponsored by IBM Storage Media and IBM System x Rack and Power Infrastructure				
4:15 PM – 5:30 PM	zTS05 R: Wed 2:30 zEnterprise - Workload Optimization And IT Economics <i>John J Thomas</i>	zES04 zEnterprise Platform Performance Management <i>Glenn Anderson</i>	zZS23 DFSMS Advanced Topics - VSAM CA Reclaim and EAV Update <i>Scott Drummond</i>	zDB03 ATS (Advanced Technical Skills) DB2 Health Check - what will the specialist prescribe for you? <i>John Iczkovits</i>	zVM07 Making z/VM and Linux Guests Production Ready - Best Practices <i>Jon vonWolfersdorf</i>
5:30 PM – 6:30 PM	Solution Center Reception — Florida Ballroom ★ Sponsored by IBM Systems Agenda Delivery				

System z Tracks and Page Reference for Abstracts

System z Technical Strategies and Architectures 111

zEnterprise System Planning and Implementation 113

z/OS and Parallel Sysplex Implementation and Performance Management 116

System z Agenda

Lake Sheen B	Lake Sheen A (Lab)	S331B	S331C	S331D
zZS21 InfiniBand Coupling Links Planning and Migration <i>Noshir Dhondy</i>	zVM13 SuSE Linux High Availability Extensions Hands-on Workshop Part 1 NOTE: This lab will begin at 8:30am <i>Richard Lewis</i>	eVR01 R: Wed 10:30 Create new SAN and SAN extension infrastructure changes with z196 zEnterprise server and DS8800 <i>Brian Larsen, (Brocade)</i>	eVR07 Novell Session 2 <i>TBD</i>	
zES08 ICSF and Crypto on zEnterprise Update <i>Greg Boyd</i>	zVM14 SuSE Linux High Availability Extensions Hands-on Workshop Part 2 <i>Richard Lewis</i>	eVR12 10G Ethernet Blueprint for Network Virtualization and I/O Convergence <i>David Berry (Broadcom)</i>	eVR05 R: Wed 1:00 Building Intelligent and Scalable Data Center Networks with Cisco Systems <i>Brent Anderson (Cisco)</i>	eVR99 Best Practices for Deploying Brocade Solutions for IBM System x and BladeCenter <i>Mike Saulter, Howard Johnson, Multiple IBM SME's</i>
zZS07 System z BC (+z8xx) SW Pricing Overview <i>Dave Chase</i>	zES05 zEnterprise Unified Resource Manager Demo <i>Riaz Ahmad</i>	eVR02 R: Wed 2:30 Create new SAN and SAN extension infrastructure changes with Power Server and DS8800 <i>Craig Nelson, Howard Johnson (Brocade)</i>	eVR04 VMware View Best Practices <i>Baker Hull (VMware)</i>	eVR08 R: Wed 4:15 Revolutionizing IBM I/O <i>Tom Boucher (Emulex)</i>
zZS20 GDPS Overview and Recent Enhancements (Versions 3.7 and 3.8) <i>Noshir Dhondy</i>	zZS15 Public Key Infrastructure (PKI) Services for z/OS 1.12 - Hands-on Lab <i>Jack Jones</i>	eVR11 The Time for the New Network is Now! Introducing QFabric™ architecture <i>Vaishali Ghiya, Mark Hinckley (Juniper Network)</i>	eVR10 New IBM System x KVM Solutions <i>Steve Hahn, Ed Johnston</i>	
zZS14 The All New LSPR and z196 <i>John Burg</i>	zZS02 z/OSMF Hands on Lab <i>Anuja Deedwaniya</i>			

System z Tracks and Page Reference for Abstracts

DB2 for z/OS BI and the IBM Smart Analytics Optimizer 120

Virtualization z/VM and Linux on System z 122

Vendor Sessions 60

System z Agenda

Friday, April 29, 2011

7:00 AM – 9:00 AM	Breakfast — Florida Ballroom 4 – 7 ★ Sponsored by IBM System x Rack and Power Infrastructure				
7:30 AM – 2:30 PM	Registration/Information				
7:30 AM – 2:30 PM	Cyber Café — Lake Lucerne				
8:00 AM – 2:00 PM	Certification Testing				
9:00 AM – 10:15 AM	Orlando VI	Lake Highland A	Lake Highland B	Lake Florence A	Lake Florence B
	zTS10 What are Industry Consultants saying about IBM Storage? The Good and the Not-so-Good <i>Victor T. Peltz</i>	zES13 zEnterprise IT Optimization and Workload Placement <i>Theresa Tai</i>	zZS17 Better Batch: Exploiting New Functions to Improve Batch Processing <i>Kathy Walsh</i>	zDB10 DB2 for z/OS Data and Index Compression <i>Willie Favero</i>	zVM09 Lessons Learned From Putting Linux on System z in Production <i>Hans-Joachim Picht</i>
10:15 AM – 10:30 AM	Coffee Break ★ Sponsored by Emulex and IBM Destination z				
10:30 AM – 11:45 AM	zTS08 R: Thu 10:30 zEnterprise LIVE DEMO: Implementing Business Apps on a z196 and zBX Infrastructure <i>Marie-Line Reynier, Mitch Green</i>	zES09 z/OS Software Positioning for the z196 Server <i>Riaz Ahmad</i>	zZS12 z/OS Software Deployment <i>Anuja Deedwaniya</i>	zDB02 R: Thu 9:00 IBM Smart Analytics Optimizer Implementation Experiences <i>Javier Chavez</i>	zVM06 IBM zEnterprise Unified Resource Manager: z/VM Implementation <i>Richard Lewis</i>
11:45 AM – 1:00 PM	Lunch — Orlando Ballroom I & II ★ Sponsored by Novell, Inc.				
1:00 PM – 2:15 PM	zTS01 R: Thu 1:00 Transformational Business Analytics on System z <i>Caryn Meyers, Alan Meyer</i>	zES14 R: Thu 10:30 Understanding WebSphere DataPower Integration Appliance for zEnterprise <i>Theresa Tai</i>	zZS13 CPU MF - the “Lucky” SMF 113s - z196 Update and WSC Experiences <i>John Burg</i>		zVM12 Oracle Solutions for Linux on Sys z and Experiences with Oracle Database Proof of Concept Impl Projects <i>Gaylan Braselton and Tom Kennelly</i>
2:15 PM	Conference Ends				

System z Tracks and Page Reference for Abstracts

System z Technical Strategies and Architectures 111



zEnterprise System Planning and Implementation 113

z/OS and Parallel Sysplex Implementation and Performance Management 116

System z Agenda

Lake Sheen B	Lake Sheen A (Lab)
zTS06 R: Thu 2:30 End-to-End Software Delivery for the zEnterprise End-to-End Platform <i>Jeff Miller</i>	zZS09 Master Key Entry Lab <i>Greg Boyd</i>
zTS07 Managing a highly virtualized “new” Data Center <i>Mike Sine</i>	

Follow the latest conference updates on Twitter or Facebook.

Tell us about your experience
Share your photos
View our videos and photos
Ask questions
Get connected!

twitter.com/IBMTechConfs (Use #ibmtechu)
 or “like” us on
facebook.com/IBMSLST4me

System z Tracks and Page Reference for Abstracts

DB2 for z/OS BI and the IBM Smart Analytics Optimizer 120	Virtualization z/VM and Linux on System z 122	Vendor Sessions 60
---	---	------------------------------

A Smarter Planet starts with you.

Build your skills at an IBM Technical University

2011 IBM System z Technical University

October 3 - 7 | Fontainebleau Miami Beach | Miami Beach, FL

The 2011 IBM® System z® Technical University features IBM zEnterprise™, IBM z/OS®, IBM z/VM®, IBM z/VSE® and Linux on System z. In 2011, we significantly expanded our coverage of System z software, including IBM DB2®, IBM CICS®, MQ, IBM WebSphere®, IBM IMS™, IBM Cognos® and more.

This annual technical education offers both stand-up lecture and hands-on-labs delivered by experts from the System z technical community. Come to Miami and see why attendees return year after year. With more than 300 sessions focused on System z Technical Strategies and Architectures, plus a new track aimed at CTOs and IT Management, you can't afford to miss it!

You can use IBM Education Packs or PartnerRewards Education Vouchers* to pay the tuition for these events!

ENROLL EARLY for BIGGER SAVINGS!
**Enroll
today!**

*Early bird pricing
available until 9/4.*

ibm.com/training/us/conf/systemz
twitter.com/IBMTechConfs

Sponsor and Exhibitor opportunities available: Visit ibm.com/training/solutioncenter

*The PartnerReward program is for IBM Business Partners and is not available in all geographies.

IBM, the IBM logo, ibm.com, CICS, Cognos, DB2, IMS, Smarter Planet, System z, WebSphere, zEnterprise, z/OS, z/VM and z/VSE are trademarks or registered trademarks of International Business Machines Corporation in the United States, other countries, or both. A current list of IBM trademarks is available on the Web at "Copyright and trademark information" at ibm.com/legal/copytrade.shtml. Linux is a registered trademark of Linus Torvalds in the United States, other countries, or both.



System z By-Track Agenda and Abstracts

System z Technical Strategies and Architectures

Wednesday	Room	ID	Title	Speaker(s)	Repeat
10:30 AM	Orlando VI	zTS03	IBM zEnterprise Technical Introduction	Harv Emery	
1:00 PM	Orlando VI	zTS04	System z Security Strategy	Jack Jones	
2:30 PM	Orlando VI	zTS05	zEnterprise - Workload Optimization And IT Economics	John J Thomas	Thu 4:15
4:15 PM	Orlando VI	zTS09	System z Storage Hardware Update	Scott Drummond	
Thursday					
9:00 AM	Orlando VI	zTS02	A Mainframe Guy is Thinking About Cloud Computing	Glenn Anderson	
10:30 AM	Orlando VI	zTS08	zEnterprise LIVE DEMO: Implementing Business Apps on a z196 and zBX Infrastructure	Marie-Line Reynier, Mitch Green	Fri 10:30
1:00 PM	Orlando VI	zTS01	Transformational Business Analytics on System z	Caryn Meyers, Alan Meyer	Fri 1:00
2:30 PM	Orlando VI	zTS06	End-to-End Software Delivery for the zEnterprise End-to-End Platform	Jeff Miller	Fri 9:00
4:15 PM	Orlando VI	zTS05	zEnterprise - Workload Optimization And IT Economics	John J Thomas	Wed 2:30
Friday					
9:00 AM	Lake Sheen B	zTS06	End-to-End Software Delivery for the zEnterprise End-to-End Platform	Jeff Miller	Thu 2:30
9:00 AM	Orlando VI	zTS10	What are Industry Consultants saying about IBM Storage? The Good and the Not-so-Good	Victor T. Peltz	
10:30 AM	Lake Sheen B	zTS07	Managing a highly virtualized "new" Data Center	Mike Sine	
10:30 AM	Orlando VI	zTS08	zEnterprise LIVE DEMO: Implementing Business Apps on a z196 and zBX Infrastructure	Marie-Line Reynier, Mitch Green	Thu 10:30

zTS01 Transformational Business Analytics on System z

Caryn Meyers, Alan Meyer

This session will talk about the advancements in the portfolio for business analytics, From infrastructure components such as the IBM Smart Analytics System, IBM Smart Analytics Optimizer, to the newest software - SPSS and Cognos now available on System z. Transform operational workloads with critical information.

zTS02 A Mainframe Guy is Thinking About Cloud Computing

Glenn Anderson

What does your boss mean when they say to you, "We should be doing cloud computing?" Is cloud computing all hype and smoke and mirrors? How does it effect your mainframe environment? How does it change the way your business operates? Is this the same thing as SOA, service-oriented architecture? A mainframe guy set out to find the answers, and discover how the thinking about cloud computing has evolved over the past 12 months. Come see what he discovered. Warning: this is still not your typical discussion of cloud computing.

zTS03 IBM zEnterprise Technical Introduction

Harv Emery

Come to this session for an introductory technical overview of the IBM zEnterprise System "System of Systems" including: the zEnterprise 196 (z196), the System z server component; the zEnterprise BladeCenter Extension (zBX), which brings optimizers and IBM general purpose POWER7 and x86 blades into the System z family; and the Unified Resource Manager (zManager) which provides platform, hardware and workload management that extends System z governance and qualities of service over multiple architecture workloads. The hardware overview of the z196 and zBX will include processor technology and organization and I/O connectivity, including connectivity to the zEnterprise intraensemble data network, intranode management network, and storage. The session is designed to provide an basic technical foundation for the more in-depth zEnterprise System technical topics to be presented in other sessions at the System z Technical Symposium. It assumes a general background in previous System z servers, z/Architecture, and System z operating systems.

zTS04 System z Security Strategy

Jack Jones

This session will be a technical review and update of the security features of System z and its z/OS, z/VM, and Linux on System z operating systems. The attendee will gain a vision of how this infrastructure, along with selected IBM middleware and management tools, are meeting the business security needs and requirements of their IT environment. The speaker will illustrate the security strength of the System z by using some pertinent examples and customer cases and show some possibilities of what might be ahead for zEnterprise.

System z By-Track Agenda and Abstracts

zTS05 zEnterprise - Workload Optimization And IT Economics

John J Thomas

Deploying workloads onto the right platforms based on the specific characteristics of the workloads will yield the best price/performance (lowest cost per workload). A Fit For Purpose deployment methodology tries to address the diverse requirements of different enterprise workloads. zEnterprise is a unique Fit For Purpose platform that extends the traditional cost benefits of mainframe workloads to a broad range of datacenter workloads. In this session we will look at some new case studies that quantify these benefits. We will cover detailed benchmark and associated cost analysis work that demonstrate cost and performance benefits of a fit for purpose deployment onto zEnterprise.

zTS06 End-to-End Software Delivery for the zEnterprise End-to-End Platform

Jeff Miller

Enterprise software delivery involves building applications that run across a variety of systems, using multiple tools with varied processes depending on target platforms, languages, and team locations. Communication and coordination among geographically dispersed teams can be challenging. Now the IBM zEnterprise System offers multiple platforms, each requiring development tools. In this session learn how the IBM Rational Software Delivery Platform addresses and overcomes many challenges of multi-platform development with Rational Developer for zEnterprise and Rational Team Concert for System z. Through live demonstrations, see how these tools provide consistent processes, collaboration, visibility and end-to-end debugging across not only all the platforms within zEnterprise but across the entire data center and beyond.

zTS07 Managing a highly virtualized “new” Data Center

Mike Sine

With the growth of z/VM and Linux on System z, more IT shops are dependent on providing an integrated management strategy that is inclusive of connecting business with technology. Next up, zEnterprise, zManager, Cloud and the expectations of new service delivery and use of virtualized resources as a key business enabler. At the heart of this is z/VM and Linux on z but it will quickly evolve from managed resources to managed services, to business service management. This session will cover why Linux on System z is fits in an enterprise for delivering the new business requirements on Cloud and how Tivoli has planned and is delivering management solutions based on how the requirements grow to automated provisioning, discovery, end to end dashboards to provide IT shops with the control and management they will require.

zTS08 zEnterprise LIVE DEMO: Implementing Business Apps on a z196 and zBX Infrastructure

Marie-Line Reynier, Mitch Green

The IBM Life Insurance / Annuity Business and Infrastructure Showcases embodies many IBM Life Insurance Core System solutions (policy administration, underwriting and product life-cycle management) and illustrates IBM's vision of business and system transformation for the insurance industry. This vision is built on IBM world-class insurance industry services, integration, middleware, infrastructure, a Service-Oriented Architecture, and best-of breed application providers. These showcases are live examples of Insurance New Business Streamlining and live examples of where zEnterprise can add value with insurance framework business projects. Business Solutions Showcase : Presentation of a real application running on a z centric architecture integrating several third-party components into a SOA composite business application. This discussion includes a live demo of the Annuity application running on a zEnterprise infrastructure. Infrastructure Solutions Showcase A workload simulating operations for a mid-size carrier in Europe. Running the SOA Business Showcase application in a live, production-like System z - centric heterogeneous infrastructure to demonstrate SOA scale, performance, resilience and cost effectiveness. This discussion includes running a simulated workload to drive the zEnterprise (IBM zEnterprise 196 processor and Power Blades on the IBM zEnterprise BladeCenter Extension. You will be able to see a live implementation of a running three-tiered application on IBM's latest mainframe hardware and will be able to ask questions about the software used to deploy the application.

A demonstration in 2 parts to:

- Demonstrate the linkage between infrastructure and business value – through a set of scenarios representing insurance pain points and opportunity areas.
- Use a realistic mix of workload that shows the value that IBM Smarter Systems, System Storage, IBM Software and Independent Software Vendor partner applications can bring to help to accelerate business transformation
- To document a path that others can follow - Provides a way to see many vendor products integrated together rather than focus on an individual offering.

zTS09 System z Storage Hardware Update

Scott Drummond

This session will review the System z disk and tape/tape automation solutions. We'll start with an overview and then take a look at recent enhancements for each these storage solutions.

zTS10 What are Industry Consultants saying about IBM Storage? The Good and the Not-so-Good

Victor T. Peltz

Gartner Group, ESG, Forrester Research, Evaluator Group and other storage industry consultants publish reports assessing IT vendors' storage products. This session will summarize recent consultant White Papers dealing with IBM storage products and discuss what the consultants believe to be the strong and weak points of IBM's current storage portfolio.

System z By-Track Agenda and Abstracts

zEnterprise System Planning and Implementation

Wednesday	Room	ID	Title	Speaker(s)	Repeat
1:00 PM	Lake Highland A	zES03	A Mainframe Guy Discovers Blades...as in zEnterprise "Blade" Extensions	Glenn Anderson	
1:00 PM	Lake Sheen A	zES11	zPCR Capacity Sizing Lab - Part 1 Introduction and Overview	John Burg	
2:30 PM	Lake Highland A	zES10	An In-Depth Look at the IBM zEnterprise 196 (z196)	Harv Emery	
2:30 PM	Lake Sheen A	zES12	zPCR Capacity Sizing Lab - Part 2 Hands On Lab	John Burg	
4:15 PM	Lake Highland A	zES06	Managing a zEnterprise Ensemble with Unified Resource Manager	Riaz Ahmad	
Thursday					
9:00 AM	Lake Highland A	zES07	zBX Hardware Overview	Greg Hutchison	
10:30 AM	Lake Sheen B	zES08	ICSF and Crypto on zEnterprise Update	Greg Boyd	
10:30 AM	Lake Highland A	zES14	Understanding WebSphere DataPower Integration Appliance for zEnterprise	Theresa Tai	Fri 1:00
1:00 PM	Lake Highland A	zES01	zEnterprise System - network architecture and virtualization overview (Part 1)	Alfred B Christensen	
1:00 PM	Lake Sheen A	zES05	zEnterprise Unified Resource Manager Demo	Riaz Ahmad	
2:30 PM	Lake Highland A	zES02	zEnterprise System - z/OS IEDN network design and implementation (Part 2)	Alfred B Christensen	
4:15 PM	Lake Highland A	zES04	zEnterprise Platform Performance Management	Glenn Anderson	
Friday					
9:00 AM	Lake Highland A	zES13	zEnterprise IT Optimization and Workload Placement	Theresa Tai	
10:30 AM	Lake Highland A	zES09	z/OS Software Positioning for the z196 Server	Riaz Ahmad	
1:00 PM	Lake Highland A	zES14	Understanding WebSphere DataPower Integration Appliance for zEnterprise	Theresa Tai	Thu 10:30

zES01 zEnterprise System - network architecture and virtualization overview (Part 1)

Alfred B Christensen

IBM's zEnterprise System provides the ability to consolidate multi tier and multi architecture workloads. This session will describe the networking architecture for the zEnterprise System, including an in depth review of the new Intra-Ensemble Data Network (IEDN) that provides the internal connectivity for this new system and how it relates to existing System z networking technologies. This session will also describe the IBM zEnterprise Unified Resource Manager advanced network virtualization functions that provide management of this network, including the ability to define multiple virtual networks for workload isolation.

zES02 zEnterprise System - z/OS IEDN network design and implementation (Part 2)

Alfred B Christensen

There are many technologies included in the z/OS Communications Server that enable you to design and implement highly available and scalable z/OS Sysplex networking scenarios, and most of you have been using those technologies through many years. How do you extend those capabilities to the zEnterprise environment, or more specifically, to the Intra-Ensemble Data Network (IEDN)? When a z/OS system is part of a z/OS Sysplex and needs to be connected to both a remote network and to the IEDN, some special considerations must be used when designing for high availability and workload management. This session will analyze those considerations and discuss a few selected network topologies to illustrate the design and implementation considerations. The session will cover topologies that include applications deployed on AIX on Power blades and also optimizers in the zBX, such as the IBM Smart Analytics Optimizer.

zES03 A Mainframe Guy Discovers Blades...as in zEnterprise "Blade" Extensions

Glenn Anderson

Do you, as a System z person, really understand what a blade is? IBM has extended the role of the mainframe by adding new infrastructure based on the IBM BladeCenter. It is called the IBM zEnterprise BladeCenter Extension (zBX). The zBX is a fully integrated system with tested and supported hardware and firmware that houses IBM BladeCenter PS701 Express blades supporting select POWER7 and IBM x86 blade servers and workload accelerators, all managed by zEnterprise Unified Resource Manager. In this presentation, a System z mainframe guy, having never really understood what a "blade" is, sets out to understand this foreign technology that has now become a part of his world with zEnterprise.

zES04 zEnterprise Platform Performance Management

Glenn Anderson

The Platform Performance Management component of IBM zEnterprise Unified Resource Manager extends a goal oriented performance management capability to both traditional System z and BladeCenter hardware environments. This extended capability provides monitoring of System z and BladeCenter hardware resources in context of performance policy and enables dynamic adjustments to CPU resources to ensure that multi-tier applications that span System z and IBM blade resources are provided with sufficient CPU resources. This presentation will examine the capabilities and basic implementation of Platform Performance Management for zEnterprise.

System z By-Track Agenda and Abstracts

zES05 zEnterprise Unified Resource Manager Demo

Riaz Ahmad

The Unified Resource Manager seamlessly integrates hardware and virtual resources management from both the IBM zEnterprise 196 central processor complex (CPC) as well as the IBM zEnterprise BladeCenter Extension (zBX). You might have already seen presentations covering these new features. This session will offer a live demo of key Unified Resource Manager tasks like: Create ensemble, Create virtual server, Manage virtual network, Create workload, Monitor workload.

zES06 Managing a zEnterprise Ensemble with Unified Resource Manager

Riaz Ahmad

The Unified Resource Manager is the “secret sauce” that ties together the zEnterprise 196 with the IBM zEnterprise BladeCenter Extension (zBX). It enables the deployment and management of the heterogeneous hardware resources of System z ensembles through a single interface that can be tied to business requirements. This session will describe the contents of an ensemble and the suites of functionality available to manage one. This session will provide an conceptual overview of the six functional management domains integrated into the Unified Resource Manager.

zES07 zBX Hardware Overview

Greg Hutchison

This presentation discusses valuable planning information for those interested in the unique, new IBM® zEnterprise™ BladeCenter® Extension (zBX) Hardware. You will be introduced to the zBX components, ordering options, important physical network connectivity options, disk attachment requirements and options, Hardware Management Console requirements, and related documentation references.

zES08 ICSF and Crypto on zEnterprise Update

Greg Boyd

ICSF is the component of z/OS that provides cryptographic function on System z. This session will cover the latest version of ICSF that exploits new functionality available on the zEnterprise 196.

zES09 z/OS Software Positioning for the z196 Server

Riaz Ahmad

The IBM zEnterprise System is comprised of the IBM zEnterprise 196, the IBM zEnterprise Unified Resource Manager, built-in support for the IBM zEnterprise BladeCenter Extension (zBX), and optimizers or IBM blades. Preparing z/OS systems to support the new IBM zEnterprise System is easy. All supported releases can run on the new server; and enhancements in SMP/E V3.5 integrate the identification, verification, acquisition, and installation of required PTFs into standard SMP/E processing. In this session, the speaker will cover z/OS software and configuration changes required to support the latest IBM zEnterprise System, the IBM zEnterprise 196 central processor complex (CPC), the IBM zEnterprise Unified Resource Manager, and the IBM zEnterprise BladeCenter Extension (zBX). He will describe the different functionality supported on each z/OS release, as well as any migration or exploitation actions required to use new functions on the IBM zEnterprise System. Systems programmers and their managers who will upgrade to the latest server will find lots of useful information in this session.

zES10 An In-Depth Look at the IBM zEnterprise 196 (z196)

Harv Emery

Come to this session for a detailed technical overview of the IBM zEnterprise 196 (z196), the System z server component of the IBM zEnterprise “System of Systems”. The material presented will include considerable technical detail on z196 design and function: processor execution including enhanced cache design and out of order instruction memory (RAIM) technology and memory offerings; and I/O subsystem structure including OSA-Express3 connectivity to the zEnterprise BladeCenter Extension (zBX). This session is an update of the session given at System z Technical Symposium. It assumes a general background in previous System z servers, z/Architecture, and System z operating systems.

zES11 zPCR Capacity Sizing Lab - Part 1 Introduction and Overview

John Burg

zPCR is a productivity tool designed to provide capacity sizing insights for IBM System z processors. It can help accurately estimate the capacity sizing impact from configuring System z processors. Capacity results are based on IBM’s LSPR data. zPCR is available as a free download available from IBM. This session provides an introduction to the zPCR capabilities to help estimate the impact of capacity sizing challenges, but will utilize the latest version (V7) for z196 support including the Advanced Functions. It will utilize z196 processor sizing examples to demonstrate its capabilities. This session is intended for someone new to capacity sizing/planning with no zPCR experience or for the experienced person who has never used zPCR. A suggested pre-req for the inexperienced zPCR user is to run Exercise 1 under Education - zPCR Exercises (Exercise Book) on the zPCR site <http://www.ibm.com/support/techdocs/atsmasr.nsf/WebIndex/PRS1381>. This session is a pre-req for Part 2.

zES12 zPCR Capacity Sizing Lab - Part 2 Hands On Lab

John Burg

Part 2 is a hands-on lab session where the attendee will run the latest version of the zPCR tool. The lab will step through a scenario completing a typical capacity sizing for the z196, where the attendee will gain skills and experience in successfully executing zPCR, including the latest version's Advanced Functions. This session is intended for someone new to capacity sizing/planning with no zPCR experience or for the experienced person who has never used zPCR. Workstations with zPCR installed will be provided. A suggested pre-req for the inexperienced zPCR user is to run Exercise 1 under Education - zPCR Exercises (Exercise Book) on the zPCR site <http://www.ibm.com/support/techdocs/atmastr.nsf/WebIndex/PRS1381>

zES13 zEnterprise IT Optimization and Workload Placement

Theresa Tai

IBM's new zEnterprise, it provides the ability to allow IT operations to be consolidated and simplified on zEnterprise systems (z, Power/x blades) with end-to-end integrated service management. In this session, we will discuss the zEnterprise integrated platform management capabilities for IT optimization, and the ability to consolidate multi-tier, multi-architecture workloads. We'll also focus on how zEnterprise environment align the technology deployment according to individual workload requirements. As the workload attributes influence platform choices and requirements for QoS, memory, storage and processing power.

zES14 Understanding WebSphere DataPower Integration Appliance for zEnterprise

Theresa Tai

This is a technology introduction to the new WebSphere DataPower Appliance XI50z for the zEnterprise. We will discuss the architecture and design points on this new purpose-built integrated XI50z appliance running on System z Enterprise Blade Extensions (zBX). We'll also cover the packaging, System z like QoS such as security, recovery, monitoring, operational controls, and change management supported by the new zEnterprise Unified Resource Manager (zManager).

System z By-Track Agenda and Abstracts

z/OS and Parallel Sysplex Implementation and Performance Management

Wednesday	Room	ID	Title	Speaker(s)	Repeat
10:30 AM	Lake Highland B	zZS08	What's New in z/OS Ver 1.13?	Riaz Ahmad	
1:00 PM	Lake Highland B	zZS06	What's New in System z Software Pricing	Dave Chase	
1:00 PM	Lake Sheen B	zZS22	What's New in DFSMS?	Scott Drummond	
2:30 PM	Lake Sheen B	zZS01	z/OS Communications Server - technical update including z/OS V1R13 enhancements	Alfred B Christensen	
2:30 PM	Lake Highland B	zZS10	z/OS Management Facility Overview	Anuja Deedwaniya	
4:15 PM	Lake Sheen B	zZS05	System z EC/Sysplex SW Pricing Overview	Dave Chase	
4:15 PM	Lake Sheen A	zZS16	Implementing z/OS LDAP Server 1.12 with RACF and DB2 - Hands-on Lab	Jack Jones	
4:15 PM	Lake Highland B	zZS19	Parallel Sysplex Update	Noshir Dhondy	

Thursday

9:00 AM	Lake Highland B	zZS11	z/OS Management Facility Implementation and Configuration	Anuja Deedwaniya	
9:00 AM	Lake Sheen B	zZS21	InfiniBand Coupling Links Planning and Migration	Noshir Dhondy	
10:30 AM	Lake Highland B	zZS04	Understanding IBM's LSPRs, MIPS, and Processor Sizing	Peter Enrico	
1:00 PM	Lake Sheen B	zZS07	System z BC (+z8xx) SW Pricing Overview	Dave Chase	
1:00 PM	Lake Highland B	zZS18	z/OS Performance "Hot" Topics	Kathy Walsh	
2:30 PM	Lake Highland B	zZS03	Exploring the SMF 113 Processor Cache Counters and LSPRs	Peter Enrico	
2:30 PM	Lake Sheen A	zZS15	Public Key Infrastructure (PKI) Services for z/OS 1.12 - Hands-on Lab	Jack Jones	
2:30 PM	Lake Sheen B	zZS20	GDPS Overview and Recent Enhancements (Versions 3.7 and 3.8)	Noshir Dhondy	
4:15 PM	Lake Sheen A	zZS02	z/OSMF Hands on Lab	Anuja Deedwaniya	
4:15 PM	Lake Sheen B	zZS14	The All New LSPR and z196	John Burg	
4:15 PM	Lake Highland B	zZS23	DFSMS Advanced Topics - VSAM CA Reclaim and EAV Update	Scott Drummond	

Friday

9:00 AM	Lake Sheen A	zZS09	Master Key Entry Lab	Greg Boyd	
9:00 AM	Lake Highland B	zZS17	Better Batch: Exploiting New Functions to Improve Batch Processing	Kathy Walsh	
10:30 AM	Lake Highland B	zZS12	z/OS Software Deployment	Anuja Deedwaniya	
1:00 PM	Lake Highland B	zZS13	CPU MF - the "Lucky" SMF 113s - z196 Update and WSC Experiences	John Burg	

zZS01 z/OS Communications Server - technical update including z/OS V1R13 enhancements

Alfred B Christensen

The z/OS Communications Server combines TCP/IP and SNA support to better address the needs of today's complex networks. This session introduces new functions and capabilities for z/OS Communications Server. The session will cover new functions in the current release of z/OS Communications Server as well as new functions in the next release.

zZS02 z/OSMF Hands on Lab

Anuja Deedwaniya

z/OSMF Hands on Lab provides an opportunity for the user to explore the functions in z/OSMF first hand. The attendees can navigate through the various tasks to realize the value of the function and how it can help them in day to day z/OS management.

zZS03 Exploring the SMF 113 Processor Cache Counters and LSPRs

Peter Enrico

The new SMF 113 measurements record measurements are designed to provide insight into the movement of data and instruction among the processor cache and memory areas. These measurements will be invaluable to help quantify the net effect of everything from turning on HiperDispatch to making critical application change. In addition, the SMF 113 measurements have become the basis for IBM's LSPRs for processor sizing. During this presentation Peter Enrico will explain concept of processor caching on zArchitecture processors, the counters available in the SMF 113 record, formulas that make the counters come alive, examples of how the counters could be used.

System z By-Track Agenda and Abstracts

zZS04 Understanding IBM's LSPRs, MIPS, and Processor Sizing

Peter Enrico

The performance and capacity of a zArchitecture processor is influenced by many factors. IBM's Large System Performance Reference (LSPR) ratios are an attempt to represent IBM's assessment of relative processor. The objective of the LSPRs are to zero in on the primary factors to understand relative processor capacities for processor sizings. A recent, yet major change to the LSPR ratings is that they are now presented relative to the SMF 113 measurements in hopes of providing customers with more accurate sizing estimations based on the customer's own SMF 113 measurements as input. During this presentation Peter Enrico will provide an LSPR refresher and then examine the updates to processor sizing relative to the SMF 113 records. Discussed will be many of the factors that influence a processor's capacity, and why variances exist for the processors in the LSPR chart.

zZS05 System z EC/Sysplex SW Pricing Overview

Dave Chase

This session will focus on the SW Pricing options available to IBM's zEnterprise 196 and System z10 EC processors and System z Sysplexes. We will discuss Monthly License Charge (MLC) metrics including:

- PSLC (Parallel Sysplex License Charges)
- WLC (Workload License Charges)
- AWLC (Advanced Workload License Charges) with Integrated Workload Pricing
- ULC (Usage License Charges)
- zNALC (New Application License Charges) plus
- IPLA "OTC" pricing.

zZS06 What's New in System z Software Pricing

Dave Chase

Keep up with the most recent announcements in the world of System z Software including Advanced Workload License Charges and Integrated Workload Pricing for the zEnterprise 196 server.

zZS07 System z BC (+z8xx) SW Pricing Overview

Dave Chase

The z800/z890/z9BC/z10BC processors offer the most flexible pricing options in the System z product line. IBM offers several "stand-alone" pricing options, unique to these processors, that offer very attractive entry-level pricing and flexibility. This session will focus on these stand-alone pricing options. Topics include: • Entry Workload License Charges (EWLC) • zSeries Entry License Charges (zELC) • Tiered Entry Workload License Charges (TWLC) • zNALC (replacing z/OS.e & Divide-a-Box) plus • IPLA "OTC" pricing. In addition, these processors can take advantage of and fully participate in the Parallel Sysplex metrics. Information on z800/z890/z9BC/z10BC participation in Sysplex SW pricing metrics, e.g., PSLC & Workload License Charge, will be included in the z9EC/z10EC/Sysplex SW Pricing session.

zZS08 What's New in z/OS Ver 1.13?

Riaz Ahmad

IBM continues to enhance its flagship operating system with new features and functions. z/OS Version 1 Release 13 will become generally available in September 2011. IBM has previewed z/OS Version 1 Release 13 which is planned to offer new availability, batch programming, and usability functions. In this session the speaker will describe new functions and enhancements that are previewed for this brand new release.

zZS09 Master Key Entry Lab

Greg Boyd

In this lab, the student will perform the steps load a master key using the ICSF Passphrase Initialization Utility and then to change those master keys via the ICSF panels. The student should have some experience with TSO and ISPF.

zZS10 z/OS Management Facility Overview

Anuja Deedwaniya

The IBM z/OS Management Facility (z/OSMF) provides a web-based graphical interface for system programmers on z/OS. This session will provide an overview of the IBM z/OS Management Facility. The speaker will cover the each of the new functions and enhancements to existing functions introduced since z/OSMF 1.11. Specifically, he will cover how to use z/OSMF for problem data management of SVC and user initiated dumps, configuring TCP/IP Policy based definitions, use the Workload Manager Policy Editor and desktop resource monitor introduced in z/OSMF V1.12. In addition, he will preview new capabilities planned for the future. This session will be useful to systems programmers and their managers who will be using (or are considering using) the z/OS Management Facility.

zZS11 z/OS Management Facility Implementation and Configuration

Anuja Deedwaniya

The IBM z/OS Management Facility (z/OSMF) is a new product that provides a web-based graphical interface for system programmers on z/OS. Configuring a web serving environment doesn't have to be complex. Come see how z/OSMF uses scripts and response/override files completely to set up the required environment. The speaker will also describe several data management best practices for problem determination. This session will be useful to systems programmers and their managers who will be using (or are considering using) the z/OS Management Facility. Information from early user experience, including hints and tips, will also be included in this session.

System z By-Track Agenda and Abstracts

zZS12 z/OS Software Deployment

Anuja Deedwaniya

z/OS software deployment is a sub step in the end-to-end software installation flow. It is a workflow that guides you through the process of copying a software instance to another physical location such as a DASD volume. This is usually done to make software (executable code, configuration files and operational data sets) available to be used on a system by users and other installation programs. For years IBM left software deployment as an exercise for the customer. However, Software Deployment is planned to be a new z/OSMF application in V1.13. The new application is intended to make it easier to manage your software images by simplifying and standardizing the cloning and deployment processes. The new capability provides the functions needed to create and deploy a copy, or clone, of any existing SMP/E-installed software image (including IBM software installed using ServerPac, CBPDO, or fee-based installation offerings, as well as ISV or customer SMP/E-installed software). In this session the speaker will review many software cloning techniques, identifying industry best practices and showing how the new Software Deployment function can be used to simplify the task.

zZS13 CPU MF - the “Lucky” SMF 113s - z196 Update and WSC Experiences

John Burg

This session will overview the CPU Measurement Facility: what it is, how to enable it, why you should use it, along with the latest updates for z10 and z196. The session will cover recent 2010 and 2011 WSC performance experiences and uses of CPU MF COUNTERS, and how CPU MF may be used as a hint to help characterize your workloads to the latest LSPR workloads with the Relative Nest Intensity metric.

zZS14 The All New LSPR and z196

John Burg

With the introduction of the zEnterprise 196 processor, the LSPR has been significantly changed to be based on a measure of a workload's intensity of use of a processor's memory hierarchy. This session will discuss the theory behind this new metric (Relative Nest Intensity) and its basis on data gathered using CPU MF. Its application to capacity sizing will be illustrated by contrasting the performance of z10 and z196 servers.

zZS15 Public Key Infrastructure (PKI) Services for z/OS 1.12 - Hands-on Lab

Jack Jones

This hands-on lab session will let the attendee customize the PKI Services template file and configuration file as they set up and run their own z/OS PKI server. You will be able to create certificates, revoke the certificates, and query the certificate status through Certificate Revocation List (CRL) and Online Certificate Status Protocol (OCSP). There will be an explanation of the services, and why and how these will be important to your installations. Education Value: Will demonstrate and explain what security personnel need to know to manage digital certificates with the no-charge PKI feature that is on their mainframe.

zZS16 Implementing z/OS LDAP Server 1.12 with RACF and DB2 - Hands-on Lab

Jack Jones

In this session, the attendee will gain hands-on experience implementing and configuring an LDAP server on a z/OS system. The LDAP server will be set up with the TDBM (DB2) and the SDBM (RACF) backend stores and sample data will be loaded into the TDBM. There will be sample verification scripts to test that both the TDBM and SDBM data can be accessed correctly. A non-IBM LDAP client will be used to demonstrate the effectiveness of this no-charge feature of z/OS. Several examples of how IBM customers are using the z/OS LDAP server will be given.

zZS17 Better Batch: Exploiting New Functions to Improve Batch Processing

Kathy Walsh

New versions of z/OS and JES2 have provided improved controls for managing batch workloads. This session will review many of these enhancements which have the potential to improved batch processing and throughput. Changes in dispatching of batch as well as new enhancement in RMF and SMF will be covered. Primarily aimed at JES2 installations, many of the new z/OS features will be of benefit to all z/OS shops. The presentation will also cover a series of benchmarks which made use of these new capabilities.

zZS18 z/OS Performance “Hot” Topics

Kathy Walsh

In this fast paced, always new presentation, the speaker will provide the latest information on System z and z/OS performance and capacity planning issues. Recent performance enhancements, gotchas and recommendations will be reviewed. Also covered will be the latest information on APARs and IBM WSC performance information.

zZS19 Parallel Sysplex Update

Noshir Dhondy

This session reviews the latest hardware and software updates in support for Parallel Sysplex. The hardware enhancements discussion will include Coupling Facility Control Code (CFCC), and Infiniband (IFB) coupling links technology. A number of software enhancements released in z/OS V1R11 and V1R12 will be discussed.

zZS20 GDPS Overview and Recent Enhancements (Versions 3.7 and 3.8)

Noshir Dhondy

After a short overview of the different GDPS offerings, get a technical update on recent GDPS functional enhancements made available in GDPS versions 3.7 and 3.8. Learn about improved availability functions (reduced impact of false freezes, enhanced Server Time Protocol (STP) and Sysplex Timer support); improvements in cross-platform support (support of Fixed Block (FB) disks); simplified systems management functions (Freeze and Swap policy simplification); scalability improvements (GDPS/XRC no UCB FlashCopy). A discussion of new and improved GDPS tools will be included along with some examples of GDPS customer references.

zZS21 InfiniBand Coupling Links Planning and Migration

Noshir Dhondy

This session will cover planning and migration considerations for InfiniBand coupling links (IFB), first introduced on the IBM System z10. The session will include considerations for performance, distance, and using the sharing capabilities supported by this new link technology on the IBM zEnterprise, System z10™ and System z9™. Planning to migrate to the IFB coupling links is especially significant because the System zEnterprise no longer supports the ICB link technology.

zZS22 What's New in DFSMS?

Scott Drummond

This session will review the new functions/features of DFSMS Release 1.12 and give a preview of the next release. We'll review new items in the categories - Scalability, Performance, Optimization, Networking and Ease of Use. Additionally, we'll review new storage hardware support provided by DFSMS.

zZS23 DFSMS Advanced Topics - VSAM CA Reclaim and EAV Update

Scott Drummond

This session will cover in depth two important items from z/OS R12 - VSAM CA Reclaim and major updates to Extended Address Volumes (EAVs) in z/OS R12. VSAM CA Reclaim is designed to help customers avoid excessive VSAM reorganizations. Also, in z/OS R12 - EAV's are now available for most DSN types.

System z By-Track Agenda and Abstracts

DB2 for z/OS BI and the IBM Smart Analytics Optimizer

Wednesday	Room	ID	Title	Speaker(s)	Repeat
10:30 AM	Lake Florence A	zDB04	DB2 for z/OS: Version 10 including migration strategy for DB2 9 or DB2 10	John Iczkovits	
1:00 PM	Lake Florence A	zDB06	My manager said I need to build a data warehouse and I can't drive a forklift	Jeff M. Sullivan	
2:30 PM	Lake Florence A	zDB08	IBM Smart Analytics Optimizer for DB2 for z/OS: How Does it Work?	Willie Favero	
4:15 PM	Lake Florence A	zDB01	Performance and Scalability of DB2 10 for z/OS	John Iczkovits	
Thursday					
9:00 AM	Lake Florence A	zDB02	IBM Smart Analytics Optimizer Implementation Experiences	Javier Chavez	Fri 10:30
10:30 AM	Lake Florence A	zDB05	DB2 Performance Tuning: Where Do We Start	Jeff M. Sullivan	
1:00 PM	Lake Florence A	zDB07	DB2 Performance with the IBM DS8800 Storage System	Victor T. Peltz	
2:30 PM	Lake Florence A	zDB09	DB2 Parallelism 2011: Busting the Myths	Willie Favero	
4:15 PM	Lake Florence A	zDB03	ATS (Advanced Technical Skills) DB2 Health Check - what will the specialist prescribe for you?	John Iczkovits	
Friday					
9:00 AM	Lake Florence A	zDB10	DB2 for z/OS Data and Index Compression	Willie Favero	
10:30 AM	Lake Florence A	zDB02	IBM Smart Analytics Optimizer Implementation Experiences	Javier Chavez	Thu 9:00

zDB01 Performance and Scalability of DB2 10 for z/OS

John Iczkovits

Performance is a key focus for DB2 10 for z/OS. DB2 10 is expected to feature better CPU performance, 64-bit exploitation, latch constraint relief, catalog restructure, a new hash access method, improved sequential detection, improved performance with disorganized indexes, dataset level Flashcopy (as an alternative to traditional image copy), inline LOBs, and many other features that improve performance and scalability, and reduce DASD consumption.

zDB02 IBM Smart Analytics Optimizer Implementation Experiences

Javier Chavez

This session will cover all aspects of an IBM Smart Analytics Optimizer implementation at a bank customer site including:

- initial planning
- working with BP and customer
- implementation
- do's and don'ts
- lessons learned

zDB03 ATS (Advanced Technical Skills) DB2 Health Check - what will the specialist prescribe for you?

John Iczkovits

Maybe you are concerned about your DB2 environment or maybe just want to validate your environment, so you are thinking about an IBM ATS (Advanced Technical Skills) DB2 Health Check. You are thinking, what really happens in a DB2 Health Check? What will I walk away with? Will my management approve of the final analysis? How will my company and I benefit from the analysis? If you've seen the required documentation list, after reviving yourself you ask "is this all really necessary"? Why does ATS really need this detailed information and what will they do with it? Find out the answers to these questions and more by attending this presentation. You will leave understanding why the ATS DB2 Health Check is truly one of the best in the industry and how it will benefit you and your company.

zDB04 DB2 for z/OS: Version 10 including migration strategy for DB2 9 or DB2 10

John Iczkovits

This session will recap the key features of DB2 9 for z/OS, followed by a look at DB2 10, the next release of DB2. If your organization needs to lower operating costs through CPU cycle reductions while still building a strong foundation for SOA and XML initiatives, you'll learn how much DB2 10 will have to offer. Database administrators will find improved database performance, scalability and availability, while memory management is dramatically reduced, so growth is much simpler. You'll also have more flexible security to help with regulatory compliance. A wide range of enhancements improves the functionality and performance of ERP applications and data warehousing. Application developers will learn about the second release of pureXML, which improves the SQL and XML interface to access XML data stored in a native format. We'll also discuss powerful new SQL enhancements, including improved SQL and data definition compatibility with other DB2 platforms, which makes porting much easier.

System z By-Track Agenda and Abstracts

zDB05 DB2 Performance Tuning: Where Do We Start

Jeff M. Sullivan

You have a performance issue; or do you? How do you know there is a performance problem? And where do you start? And is the correct tooling in place? When faced with performance issues, many problems come down to how to start. This presentation speaks to the performance tuning audience and covers both DB2 for LUW and DB2 for z/OS. Having the underlying political environment to allow for performance tuning is as important as solving the performance issues. Examples will be shown using DB2 Performance Expert and Query Tuner, but are used only as the tooling vehicles; any performance tool may be used with similar attributes. Along with covering tooling attributes, the presentation will also cover establishing relationships between IT groups, performance feedback mechanisms, establishing SLAs, and typical performance issues with DB2 for z/OS and DB2 for LUW.

zDB06 My manager said I need to build a data warehouse and I can't drive a forklift

Jeff M. Sullivan

A primer for the DB2 for z/OS DBA and covers the concepts of data warehousing for the DBA using DB2 for z/OS and z/OS system programmer. Looking at business processes over the years there is one certainty - there is nothing new under the sun. This presents the terminology and builds upon the knowledge, skills, and tools already known by most DB2 DBAs to manage a data warehouse. In addition, there are many high-level issues which need to be addressed when installing a data warehouse with business intelligence software from the perspective of the mainframe systems programmer. This presentation will answer the three major questions to DW/BI: - What is a DW, using a system programmer's terminology? - What do I need to do as a system programmer to put in a DW? - How will my job as a system programmer change? The presentation ends on a partitioning methodology called "partitioning for manageability" which describes how to partition in sizes for quick execution but also allows for tablespace reorganizations in a reasonably quick wall-clock time which is ideal for data warehousing applications.

zDB07 DB2 Performance with the IBM DS8800 Storage System

Victor T. Peltz

In 2010 IBM delivered enhancements to High Performance FICON with the z196 processor, and the next member of the IBM DS8000 Enterprise storage family, the IBM DS8800. The DS8800 is the first IBM DS8000 storage system to feature SAS drives and 8 gigabit/second device adapters. This presentation will illustrate what these enhancements mean for DB2 performance and for some other general-purpose System z workloads. Some of the topics covered in this session are: - DS8800 I/O Response Time and Throughput compared to corresponding measurements using IBM DS8700 and DS8300 storage systems, - Response Time using a DS8300 with 15K RPM disks compared to a DS8800 using 10K RPM disks, - performance comparisons between the DS8800 and DS8300, - throughput using BSAM I/O, and - comparisons between DB2 R9 and DB2 R10 using FICON and zHPF. This session will be of interest to individuals responsible for system performance analysis and planning.

zDB08 IBM Smart Analytics Optimizer for DB2 for z/OS: How Does it Work?

Willie Favero

This session is a technology overview of the Smart Analytics Optimizer that enables a new class of high speed business intelligence and analytic queries on System z. The innovative technology within the IBM Smart Analytics Optimizer offers organizations the ability to integrate business insights into the fabric of their operational processes while accelerating queries, making business insights more accessible to the front lines of business. The value of this applies to executive users that need to make well-founded, strategic decisions as well as knowledge workers who need to have insight into the daily operational aspects of the business.

zDB09 DB2 Parallelism 2011: Busting the Myths

Willie Favero

Parallelism was first introduced to DB2 way back in 1993 with DB2 Version 3. With every release of DB2 parallelism has been enhanced. In applications like data warehousing and business intelligence, it's almost a necessity. Yet, a surprisingly large number of customers continue to avoid parallelism when it could offer significant elapsed time improvements. With this presentation, we'll try to debunk the myths that surround using DB2 parallelism. We will discuss a little bit of parallelism's history, how parallelism works, the parameters in DB2 that control parallelism and the affects of the value chosen for those parameters, and how to get the greatest benefits when parallelism is put to use; the DOS & DON'TS necessary for you to get the most out of DB2's parallelism. We will also discuss the latest enhancements to parallelism and how parallelism can take advantage of zIIP specialty engines.

zDB10 DB2 for z/OS Data and Index Compression

Willie Favero

DB2 for z/OS has very successfully provided data compression for several versions. With DB2 9 for z/OS, you can also compress your indexes. This can result in significant reductions in your DASD consumption. In this session, the speaker will tell you how data and index compression work with DB2 for z/OS.

System z By-Track Agenda and Abstracts

Virtualization z/VM and Linux on System z

Wednesday	Room	ID	Title	Speaker(s)	Repeat
10:30 AM	Lake Florence B	zVM02	Linux on System z - Overview and Introduction	Hans-Joachim Picht	
1:00 PM	Lake Florence B	zVM08	Introduction to z/VM Virtualization	Bruce Hayden	
2:30 PM	Lake Florence B	zVM03	Linux on System z Current and Future Technologies	Hans-Joachim Picht	
4:15 PM	Lake Florence B	zVM10	z/VM Performance Update	Jon vonWolfersdorf	
Thursday					
9:00 AM	Lake Florence B	zVM01	Linux on System z: A Security Point of View	Jack Jones	
8:30 AM	Lake Sheen A	zVM13	SuSE Linux High Availability Extensions Hands-on Workshop Part 1 — <u>NOTE: This lab will begin at 8:30am</u>	Richard Lewis	
10:30 AM	Lake Florence B	zVM11	A zEnterprise look at managing z/VM and Linux for System z and either as part of the ensemble or as a stand alone system	Mike Sine	
10:30 AM	Lake Sheen A	zVM14	SuSE Linux High Availability Extensions Hands-on Workshop Part 2	Richard Lewis	
1:00 PM	Lake Florence B	zVM04	z/VM Platform Update: z/VM V6.1 and Statements of Direction	Bruce Hayden	
2:30 PM	Lake Florence B	zVM05	z/VM Single System Image and Guest Mobility Preview	Richard Lewis	
4:15 PM	Lake Florence B	zVM07	Making z/VM and Linux Guests Production Ready - Best Practices	Jon vonWolfersdorf	
Friday					
9:00 AM	Lake Florence B	zVM09	Lessons Learned From Putting Linux on System z in Production	Hans-Joachim Picht	
10:30 AM	Lake Florence B	zVM06	IBM zEnterprise Unified Resource Manager: z/VM Implementation	Richard Lewis	
1:00 PM	Lake Florence B	zVM12	Oracle Solutions for Linux on Sys z and Experiences with Oracle Database Proof of Concept Impl Projects	Gaylan Braselton and Tom Kennelly	

zVM01 Linux on System z: A Security Point of View

Jack Jones

Linux has been running on the System z hardware for over 10 years now. This session will review the security options within the Linux on System z environment. There will be both a technical and a business discussion on the value that z/VM and Linux for System z bring to the System z hardware, from a security point of view. The integration of this IT environment with the z/OS operating system and its core applications will also be presented in addition to solutions that are currently being used in production.

zVM02 Linux on System z - Overview and Introduction

Hans-Joachim Picht

This session will introduce the Linux concepts from a mainframer's perspective. It describes the system from the bottom up and gives the audience a base understanding of how to get around in Linux.

zVM03 Linux on System z Current and Future Technologies

Hans-Joachim Picht

This presentation will detail the latest features for Linux on System z, as well as a detailed outlook for Linux on System z development occurring in the IBM Labs and the open source community. Future technology enhancements are expected to be provided with upcoming releases of Linux enterprise distributions. We will address both System z specific features and some current platform independent developments in Linux. The session will attempt to give an impression of how Linux development for System z works, and where we are heading. Current technology will be presented as we take a closer look at the features which have been added to the most recent Red Hat and SuSE Linux Distribution Update.

zVM04 z/VM Platform Update: z/VM V6.1 and Statements of Direction

Bruce Hayden

This session will provide you with the latest & greatest information about z/VM. We will discuss support dates, important APARs for z/VM V5.4, z/VM 6.1, the Statements of Direction for Single-System Image and Live Guest Relocation, as well as z/VM support for IBM zEnterprise.

zVM05 z/VM Single System Image and Guest Mobility Preview

Richard Lewis

IBM has issued Statements of Direction describing its intentions to enable multiple z/VM Systems to collaborate in a single system image cluster, and to enable the relocation of guest from one member of the cluster to another. This presentation provides a preview of these enhancements.

System z By-Track Agenda and Abstracts

zVM06 IBM zEnterprise Unified Resource Manager: z/VM Implementation

Richard Lewis

The recently announced IBM zEnterprise System is a system of systems integrating System z along with other IBM system technologies. The key to this integration is the zEnterprise Unified Resource Manager. This presentation will cover the details of what needs to be done to a z/VM LPAR in order to participate in this new integrated management environment.

zVM07 Making z/VM and Linux Guests Production Ready - Best Practices

Jon vonWolfersdorf

This session will discuss installation and configuration “Best Practices” for z/VM and Linux running as a guest of z/VM. It will highlight some common misunderstandings and provide configuration recommendations in the areas of CPU, memory, and I/O to achieve optimum performance.

zVM08 Introduction to z/VM Virtualization

Bruce Hayden

This presentation will give you a strong understanding of what the industry buzzword “virtualization” means in the context of System z processors and the z/VM operating system. Key topics will include System z computing concepts, the virtual machine model, commands and facilities for configuring virtualized resources, virtual machine scheduling and dispatching, methods for virtualizing memory and I/O devices, and ways z/VM’s virtual machine model transcends mere hardware virtualization.

zVM09 Lessons Learned From Putting Linux on System z in Production

Hans-Joachim Picht

You’ve heard by now that Linux runs on the mainframe and is effectively the same Linux as anywhere else - from Intel to System z servers. The challenge is that there can be a lot of politics around choosing to run Linux on the mainframe, deciding on a distribution and methodology for installing and maintaining Linux and even who will be responsible for the virtual Linux environments. Many decisions and discussions need to be made around processes, tools and solutions to decide if they are ‘right’ for a virtual Linux farm. This high level session will give you an insight on how customers around the world dealt with these topics. You will hear how they took mainframe Linux from initial proof of concept to being a strategic platform choice for several important applications.

zVM10 z/VM Performance Update

Jon vonWolfersdorf

This session will discuss what is new in z/VM Performance in terms of performance improvements and considerations. The topics will include z/VM 6.1 and service that affects performance. The session will cover a number of different releases and items. An example of the service is a PTF that introduced a new SET SRM option for the scheduler. We’ll also look briefly at relevant hardware performance considerations.

zVM11 A zEnterprise look at managing z/VM and Linux for System z and either as part of the ensemble or as a stand alone system

Mike Sine

They expect solutions on z/VM and Linux for System z to have similar System Management capabilities to what they have in the z/OS environment. While similar in nature, these tools must assist in managing the unique challenges of virtual servers compared to servers on dedicated hardware. This presentation will focus on how OMEGAMON XE on z/VM and Linux can be used to not only debug performance problems when they arise, but to monitor the overall health of your z/VM and Linux for System z systems, as well as do capacity planning for future expansion. Additionally, scenarios showing the benefits of integration with other IBM management software for z/VM will be introduced and integration into zEnterprise.

zVM12 Oracle Solutions for Linux on Sys z and Experiences with Oracle Database Proof of Concept Impl Projects

Gaylan Braselton and Tom Kennelly

Oracle Solutions for Linux on Sys z and Experiences with Oracle Database Proof of Concept Impl Projects

zVM13 SuSE Linux High Availability Extensions Hands-on Workshop Part 1 – NOTE: This lab will begin at 8:30am

Richard Lewis

Current applications require nearly 100% availability. This typically means building a clustered high availability environment so that applications remain available through both planned and unplanned outages. This hands-on workshop will provide an opportunity to install and configure the SuSE Linux High Availability Extensions across multiple Linux virtual machines. Once the infrastructure is configured, you will implement resources such as a cluster file system (OCFS2) and an Apache web server with a virtual IP address. You will then have the opportunity to test and see that the cluster file system, Apache web server and associated virtual IP address continues to function when simulating both planned and unplanned outages.

zVM14 SuSE Linux High Availability Extensions Hands-on Workshop Part 2

Richard Lewis

A Linux for System z High Availability lab exercise.

Vendor Sessions By-Track Agenda and Abstracts

Vendor Sessions

Wednesday	Room	ID		Title	Speaker(s)	Repeat
10:30 AM	S331B	eVR01	Brocade	Create new SAN and SAN extension infrastructure changes with z196 zEnterprise server and DS8800	Brian Larsen, (Brocade)	R: Thu 9:00
10:30 AM	S331C	eVR03	Vmware	VMware vCloud Director Technical Overview	Eric Hardcastle (VMware)	
10:30 AM	S331D	eVR14	ORSYP	Best practices for optimum IT Capacity Utilization - A lean 6 sigma Approach	Jordi Serras Marques or Aymeric Ratel (ORSYP)	
1:00 PM	S331B	eVR17	RedHat	Red Hat Enterprise Virtualization Overview	Andrew Cathrow	
1:00 PM	S331C	eVR05	Cisco	Building Intelligent and Scalable Data Center Networks with Cisco Systems	Brent Anderson (Cisco)	R: Thu 10:30
1:00 PM	S331D	eVR15	Smart Technologies	Improving your TCO with Enterprise SSDs	Esther Spanjer (Smart Technologies)	
2:30 PM	S331B	eVR02	Brocade	Create new SAN and SAN extension infrastructure changes with Power Server and DS8800	Craig Nelson, Howard Johnson (Brocade)	R: Thu 1:00
2:30 PM	S331C	eVR06	Novell	Novell Session 1	TBD	
2:30 PM	S331D	eVR16	Optica	How do I plan for End of Support of ESCON I/O on the next System z platform?	Sean Seitz, Michael Dailey (Optica)	
4:15 PM	S331C	eVR09	Eaton	Improve availability, manageability & reduce cost in a virtualized environment with Rack and Power solutions	Patrick Giangrosso, George Correira	
4:15 PM	S331D	eVR08	Emulex	Revolutionizing IBM I/O	Tom Boucher (Emulex)	R: Thu 1:00
Thursday						
9:00 AM	S331B	eVR01	Brocade	Create new SAN and SAN extension infrastructure changes with z196 zEnterprise server and DS8800	Brian Larsen, (Brocade)	R: Wed 10:30
9:00 AM	S331C	eVR07	Novell	Novell Session 2	TBD	
10:30 AM	S331B	eVR12	Broadcom	10G Ethernet Blueprint for Network Virtualization and I/O Convergence	David Berry (Broadcom)	
10:30 AM	S331C	eVR05	Cisco	Building Intelligent and Scalable Data Center Networks with Cisco Systems	Brent Anderson (Cisco)	R: Wed 1:00
10:30 AM	S331D	eVR99	Brocade	Best Practices for Deploying Brocade Solutions for IBM System x and BladeCenter	Mike Saulter, Howard Johnson, Multiple IBM SME's	
1:00 PM	S331B	eVR02	Brocade	Create new SAN and SAN extension infrastructure changes with Power Server and DS8800	Craig Nelson, Howard Johnson (Brocade)	R: Wed 2:30
1:00 PM	S331C	eVR04	Vmware	VMware View Best Practices	Baker Hull (VMware)	
1:00 PM	S331D	eVR08	Emulex	Revolutionizing IBM I/O	Tom Boucher (Emulex)	R: Wed 4:15
2:30 PM	S331B	eVR11	Juniper	The Time for the New Network is Now! Introducing QFabric™ architecture	Vaishali Ghiya, Mark Hinckley (Juniper Network)	
2:30 PM	S331C	eVR10	Eaton	New IBM System x KVM Solutions	Steve Hahn, Ed Johnston	

Vendor Sessions By-Track Agenda and Abstracts

eVR01 Improve availability, manageability & reduce cost in a virtualized environment with Rack and Power solutions

Brian Larsen, (Brocade)

Brocade — Intermediate

Technical Planning Session: Learn how the z196 zEnterprise server and DS8800 creates new SAN and SAN extension infrastructure changes. The zEnterprise System is the world's fastest and most scalable enterprise system with unrivalled reliability, security, and manageability... your infrastructure needs to be as well. There are several areas that drive new demand with zEnterprise:

- Storage Networking refreshing to 8 Gig Switching
- Storage Networking for Long distance FCIP solutions
- Storage Networking for High Availability
- IP Networking for Global Mirroring and Metro Mirroring (PPRC and XRC)
- IP Networking Access for application Access
- IP Networking Consolidation – Reducing Footprint, Complexity, and Power Consumption
- FICON Management

Learn how Brocade and IBM has both the SAN and IP b-type products with unique features to satisfy all zEnterprise requirements.

eVR02 Create new SAN and SAN extension infrastructure changes with Power Server and DS8800

Craig Nelson, Howard Johnson (Brocade)

Brocade — Intermediate

Technical Planning Session: Learn how the Power Server and DS8800 creates new SAN and SAN extension infrastructure changes. Power is Optimized for Cloud, Delivering superior qualities of service for the most mission critical workloads.

- Virtualization of servers, storage, and networks is the Foundation of CLOUD Computing.
- Learn how the SAN infrastructure provides a part of the foundation of Cloud Computing.

A comprehensive suite of networking solutions for Enterprise Datacenters to effectively transform legacy infrastructures into highly efficient, virtualized and dynamic computing centers. What needs to be considered to determine which type of disk storage is “right” for your IBM Power environment? Do you want to have IBM Power play with a SAN-box? Is SAN disk storage a better choice for you than integrated storage? This session will help you understand the factors involved in designing a disk storage subsystem for various objectives and compare integrated and external disk requirements for configuration, environmental, and management.

eVR03 VMware vCloud Director Technical Overview

Eric Hardcastle (VMware)

VMware — Intermediate

Cloud computing is rapidly changing the way IT services are provided within companies and by technology providers. Attend this session to learn how VMware vCloud Director provides the management, multi-tenancy and self-service automation needed to enable businesses to fully leverage public, private and hybrid clouds.

eVR04 VMware View Best Practices

Baker Hull (VMware)

VMware — Intermediate

VDI deployments continue to increase as customers look for ways to stretch shrinking IT budgets and provide access across a variety of end-user devices. Attend this session to learn the latest performance best practices for VMware View and Composer, along with tips on assessing whether a customer is a good candidate for VDI.

eVR05 Building Intelligent and Scalable Data Center Networks with Cisco Systems

Brent Anderson (Cisco)

Cisco — Intermediate

Resource virtualization has become a requirement for today's Data Centers. It provides a reduction in costs due to increased asset utilization while improving business resilience and responsiveness to business needs. Cisco Systems has developed technology and a line of products designed specifically to get the most out of the dynamic Data Center of today and grow to handle the needs of tomorrow's Data Center. Please join us to explore what Cisco has to offer to help you grow your business today and tomorrow.

eVR06 Novell Session 1

TBD

Novell

At the time of printing the Novell sessions were still being worked. For more information on this session, see the daily change sheet and/or stop by the Novell booth in the Solution Center.

eVR07 Novell Session 2

TBD

Novell

At the time of printing the Novell sessions were still being worked. For more information on this session, see the daily change sheet and/or stop by the Novell booth in the Solution Center.

eVR08 Revolutionizing IBM I/O

Tom Boucher (Emulex)

Emulex

The growth of virtualization has generated an explosion of bandwidth requirements for networking and storage in the data center. This I/O bottleneck is a major pain point customers, but the vast array of confusing offerings is causing delays in purchase decisions. This session will cut through the confusion to deliver a clear strategy to address customer I/O needs with unique and compelling solutions. You will leave this session with the knowledge to develop a simple, flexible, high performance I/O solution at lower cost for any size datacenter.

Vendor Sessions By-Track Agenda and Abstracts

eVR09 Improve availability, manageability & reduce cost in a virtualized environment with Rack and Power solutions

*Patrick Giangrosso, George Correia
Eaton — Intermediate*

New IBM Rack and Power solutions improve availability, manageability and reduce cost in a virtualized environment. Data center managers are increasingly being tasked with finding new ways to improve efficiency and reduce cost while still maintaining the highest service levels mandated by customers. Learn how IBM's all new System x Rack and Power solutions help achieve these goals. This session will cover how the new IBM Uninterruptible Power Supplies (UPS) integrate with Systems Director Active Energy Manager to help extend the value of virtualization, lower power bills, and promote greater efficiencies. Also find out how the new IBM Switched and Monitored Power Distribution Units (PDU) and 1200 mm Deep Racks can help reduce acquisition cost while simplifying cable management, deployment and increasing accessibility for improved serviceability.

eVR10 New IBM System x KVM Solutions

*Steve Hahn, Ed Johnston
Eaton — Intermediate*

Learn how IBM's all new System x KVM and Console family delivers innovative, industry leading, technologies to greater improve your deployment flexibility, server management and control. Discover how these solutions provide enhanced management, access, and advanced security capabilities, including support for physical TFA devices such as CAC cards and other USB based readers. IBM's new KVM over IP switches provide remote access and serial console management technology in a single appliance to manage servers and serial devices at the rack or across the globe. See for yourself how IBM provides solutions that deliver benefits competitors can't.

eVR11 The Time for the New Network is Now! Introducing QFabric™ architecture

*Vaishali Ghiya, Mark Hinckley (Juniper Network)
Juniper — Intermediate*

The data center network is increasingly critical to application scalability and business productivity. Its complexity and inflexibility make it unable to cope with surging data and traffic that a growing business consumes. The Juniper Networks® QFabric™ architecture and the QFX Series product family fundamentally change the dynamics of data center networking, leading the evolution to a virtualized, converged, and cloud-ready data center. Come learn how your customers can take advantage of QFabric starting today!

eVR12 10G Ethernet Blueprint for Network Virtualization and I/O Convergence

*David Berry (Broadcom)
Broadcom*

When introducing virtualization into a Data Center the priority has often been maximizing the efficiency of CPU and Memory resources. However, the virtualization architecture practice fundamentally changes the requirements for high-speed Ethernet Network Controllers. Ethernet has proven to be extremely resilient in responding to the challenges of scaling and adapting to new requirements. In this track we will explore multi-port 10G network controller architecture requirements and recent industry advancements for achieving Virtualized and Converged I/O deployments.

eVR14 Best practices for optimum IT Capacity Utilization - A lean 6 sigma Approach

*Jordi Serras Marques or Aymeric Ratel (ORSYP)
ORSYP*

The purpose of this presentation is to explain the best practices for optimizing IT Capacity utilization by implementing a pragmatic approach and industry standards such as Lean and 6 Sigma. The objective is for you to understand how these methods apply to IT Operations and what results you can expect from implementing these best practices. You will see how the ORSY Performance and Capacity management solution, Sysload, can deliver these results through a demonstration on how extraordinarily granular and high frequency metrics can deliver reports which allow you to understand your usage, and enable you to make informed decisions about how to better control and optimize your physical and virtual environments.

eVR15 Improving your TCO with Enterprise SSDs

*Esther Spanjer (Smart Technologies)
Smart Technologies*

Solid State Storage Devices are poised for rapid adoption into Enterprise computing platforms, offering I/O performance well beyond traditional HDD solutions. While early Enterprise adoption has been focused primarily on extreme performance and endurance using SLC NAND flash, proliferation into the Enterprise mainstream platforms will be fueled by the lower cost offered by MLC NAND based devices. Replacing HDDs with Enterprise class SSDs allows for higher performance, higher reliability, lower power consumption, resulting in a lower Total Cost of Ownership. This presentation will look at the value proposition of enterprise class SSDs in an enterprise computing environment. It will use a demo of an IBM eX5 server with eXFlash technology as an example of how computing density and TCO can be dramatically improved when compared to traditional HDD-based systems.

eVR16 How do I plan for End of Support of ESCON I/O on the next System z platform?

*Sean Seitz, Michael Dailey (Optica)
Optica*

The zEnterprise 196 will be the last high end server to support ESCON channels (can't be ordered or carried forward on the next platform). Optica will show you how to prepare for the end of ESCON channel connectivity on your mainframe while extending the life of select, high value ESCON and Bus/Tag devices necessary to support a targeted set of stable, mature applications. IBM has selected Optica to help make the transition easy with Optica's Prizm FICON to ESCON Converter. In this session, Optica will overview the Prizm solution, present real customer examples and provide you with the information you'll need to plan your transition with confidence.

eVR17 Red Hat Enterprise Virtualization Overview

*Andrew Cathrow
RedHat*

Red Hat Enterprise Virtualization extends the core KVM hypervisor technology that ships with Red Hat Enterprise Linux, adds manageability and support for large, complex virtualization environments, and forms the basis for a Red Hat cloud infrastructure. This session will provide an introduction to Red Hat Enterprise Virtualization, covering such topics as:

- The underlying KVM hypervisor features and capabilities
- Red Hat Enterprise Virtualization Manager
- The advantages of Red Hat Enterprise Virtualization management technology
- Why Red Hat Enterprise Virtualization makes the ideal platform for the deployment of Red Hat Enterprise Linux guests, including Red Hat Enterprise Linux 6
- Red Hat Enterprise Virtualization customer use and deployment cases
- Cost and agility advantages of Red Hat's subscription model

eVR99 Best Practices for Deploying Brocade Solutions for IBM System x and BladeCenter

*Mike Saulter, Howard Johnson, Multiple IBM SME's
Brocade — BoF*

Come to this session and learn about the growing portfolio of Brocade System x and BladeCenter solutions. Product discussions with IBM System x FTSS and Brocade team members will include adapters, fibre channel switching and the emerging DCB/convergence portfolio. Also learn about Brocade management tools and how these products connect to both the server/blade and to external storage.

Solution Center Exhibit Guide

Tuesday, April 26. 5:30 PM – 7:30 PM Solution Center Reception

Wednesday, April 27. 11:45 AM – 1:00 PM Solution Center Open
5:30 PM – 7:30 PM Solution Center Reception

Thursday, April 28. 11:45 AM – 1:00 PM Solution Center Open
5:30 PM – 6:30 PM Solution Center Reception

Platinum Sponsor

Brocade

Booth 40
www.brocade.com

Sponsoring: Tuesday, Wednesday and Thursday Lunch
Wednesday Reception

Innovative Brocade® network infrastructure solutions help the world's leading organizations transition smoothly to a virtualized world where applications and information reside anywhere. Based on the Brocade One™ unified network strategy, these solutions are designed to provide a flexible IT infrastructure with unmatched simplicity, non-stop networking, application optimization, and investment protection.

As Brocade's longest standing OEM relationship, Brocade and IBM offer a comprehensive portfolio of SAN and LAN solutions to help customers reliably bring information to people in a cost-effective way. www.smarternetworks.com



BROCADE

Gold Sponsors

Cisco Systems

Booth 4
www.cisco.com

Sponsoring: Tuesday morning Coffee Break
Thursday Breakfast

Building Next-Generation Data Centers with Cisco Systems

Resource virtualization is central to Cisco Next Generation DataCenter because it reduces costs by increasing asset utilization, while improving business resilience, and responsiveness to business needs. These next-generation virtualized data centers need a network infrastructure that delivers the full potential of technologies such as server virtualization and unified data center fabric, and supports broader architectural shifts such as cloud computing.



Emulex

Booth 48
www.emulex.com

Sponsoring: Friday morning Coffee Break
Wednesday Breakfast

Emulex is the leader in connectivity solutions for the data center and IBM's strategic partner for I/O. As the exclusive provider of key fibre channel, 10GbE and embedded storage technology, Emulex connects IBM systems today and into the future. Our Connectivity Continuum architecture provides networking services that transition today's infrastructure into tomorrow's unified network ecosystem. Emulex connects individuals to information, users to collaboration, applications to data, companies to customers, and IBM to a Smarter Planet.



Solution Center Exhibit Guide

Gold Sponsors *(continued)*

IBM System x Rack and Power Infrastructure



Booth 52

<http://www-03.ibm.com/systems/x/options/rackandpower/index.html>

Sponsoring: Thursday Afternoon Coffee Break
Friday Breakfast

Fully integrated and designed for System x, BladeCenter and Storage systems, Rack and Power Infrastructure solutions provide the security, stability and reliability that your business demands. IBM Racks optimize thermal efficiency and simplify cable management. IBM KVM solutions and flat panel consoles allow remote access and control of servers. IBM PDU and UPS solutions provide efficient power delivery and effective power protection. Manage and optimize servers and server equipment for a smarter data center.

Novell, Inc.



Booth 50

www.novell.com

Sponsoring: Wednesday Morning Coffee Break
Friday Lunch

At Novell, we are the leader in the intelligent workload management market with WorkloadIQ. We enable customers to reduce the cost, complexity, and risk associated with their IT systems through our solutions for identity and security, systems management, collaboration and Linux based operating platforms. And we are dedicated to helping organizations securely deliver and manage computing services across physical, virtual and cloud computing environments. Through our infrastructure software and ecosystem of partnerships, Novell integrates mixed IT environments, allowing people and technology to work as one.

VMware, Inc.



Booth 46

www.vmware.com

Sponsoring: Tuesday Afternoon Coffee Break
Tuesday Lunch

VMware, the global leader in virtualization and cloud infrastructure, delivers customer-proven solutions that accelerate IT by reducing complexity and enabling more flexible, agile service delivery. VMware enables enterprises to adopt a cloud model that addresses their unique business challenges. VMware's approach accelerates the transition to cloud computing while preserving existing investments and improving security and control. VMware solutions help organizations of all sizes lower costs, increase business agility and ensure freedom of choice.

Silver Sponsors

Broadcom

Booth 54

www.broadcom.com

Sponsoring: Tuesday Afternoon
Coffee Break



Broadcom Corporation is a prominent technology innovator and global leader in semiconductors for wired and wireless communications with the industry's broadest portfolio of products that enable the delivery of voice, video, data and multimedia to and throughout the home, the office and the mobile environment. Broadcom - Connecting everything®.

IBM DDS6/DAT160 Tape Drive

Booth 8

<http://www-03.ibm.com/systems/storage/tape/ddsgen6/index.html>

Sponsoring: Thursday Morning Coffee Break

Please stop by the booth to learn more about IBM's complete lineup of DDS/DAT Tape drives in both System X and Power Systems. We offer great reliable entry-level data protection for small to medium sizes business.

DDS6/DAT160 Tape Solutions

Juniper Networks



Booth 10

www.juniper.net

Sponsoring: Wednesday Morning Coffee Break

Juniper Networks is in the business of network innovation, helping customers transform the experience and economics of networking. Juniper Networks® QFabric™ architecture and the QFX Series product family fundamentally change the dynamics of data center networking, leading the evolution to a virtualized, converged, and cloud-ready data center.

ORSYP Software



Booth 2

www.orsyp.com

Sponsoring: Thursday Morning Coffee Break

ORSYP, an independent ITOM solutions provider helps customers assure that IT services are delivered on-time. With over 25 years of growth, ORSYP's software, including Workload Automation and Performance & Capacity Management products, are trusted and proven in more than 1400 of the world's most demanding IT environments.

Solution Center Exhibit Guide

Event Sponsor

IBM Systems Lab Services and Training

Booth 16

www.ibm.com/systems/services/labservices/

Sponsoring: Coffee Break on Wednesday afternoon

IBM Systems Lab Services and Training offers a portfolio of services designed to acquire, maintain, and optimize expert IT skills.

IBM Exhibitors

IBM Destination z

Booth 27

<http://www.destinationz.org>

Sponsoring: Friday morning coffee break

WHAT'S THE BUZZ...

The Destination z community is growing and we want YOU!

Come to our booth to find out how you can become part of the new Destination z community.

IBM iDoctor for IBM i

Booth 26

https://www-912.ibm.com/i_dir/idoctor.nsf

Sponsoring: Wednesday afternoon coffee break

The IBM iDoctor for IBM i suite of performance tools continues to develop and grow. It is driven by demand from performance experts in the IBM i Global Support Center, the IBM i Benchmark Center and IBM STG Lab Services, along with feedback from customers and consultants, who regularly use iDoctor to collect, investigate and analyze performance data. The goal of iDoctor is to make analysts more productive and help solve complex performance issues quickly.

IBM Storage Division

Booth 28

<http://www.ibm.com/systems/storage/>

Sponsoring: Thursday morning coffee break

IBM Storage product Demo's.

IBM Storage Media

Booth 17

<http://www-03.ibm.com/systems/storage/media/>

Sponsoring: Thursday afternoon coffee break

IBM System x & BladeCenter

Booth 56

<http://www.ibm.com/systems/x/>

Sponsoring: Tuesday morning coffee break

To take advantage of the next big opportunity you'll need performance, scalability, reliability and performance, System x & BladeCenter takes your business where you want it to go. We provide the technology that will help your business innovate and thrive today, and have a vision and dedication for continued innovation for tomorrow.

Solution Center Exhibit Guide

Exhibitors

21st Century Software, Inc.

www.21stcenturysoftware.com Booth 34

Dino Software Corporation

www.dino-software.com Booth 30

Imation Corp.

www.imation.com Booth 36

Midrange Performance Group

www.mpginc.com Booth 12

Optica Technologies

www.opticatech.com Booth 1

QLogic Corporation

www.qlogic.com Booth 7

Red Hat

www.redhat.com Booth 39

SHARE

www.share.org Booth 38

SMART Modular Technologies

www.smartm.com Booth 32

Software Engineering of America

www.seasoft.com Booth 13

UNICOM Systems, Inc.

www.unicomglobal.com Booth 58

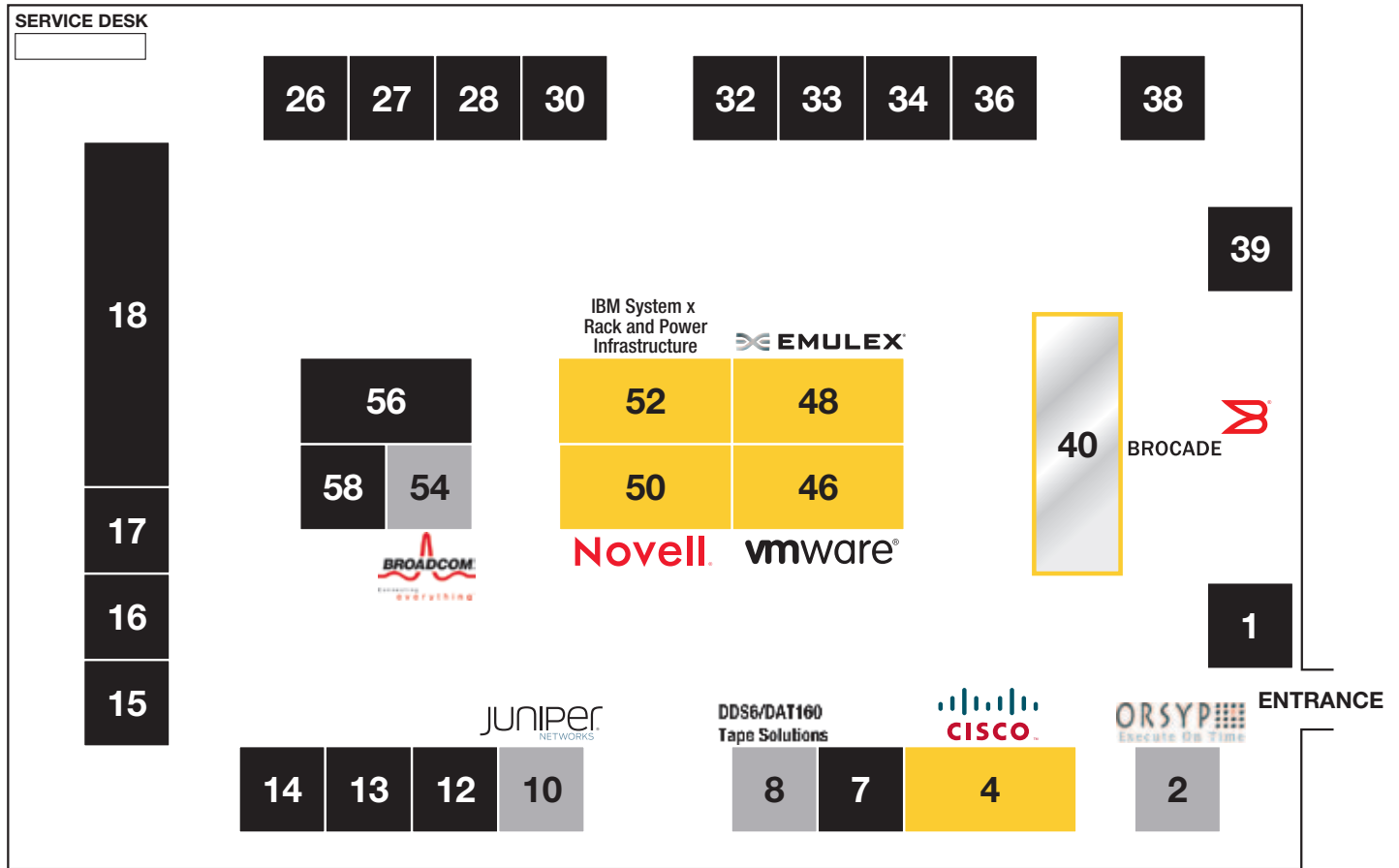
Velocity Software, Inc.

www.velocitysoftware.com Booth 33

Vicom Infinity, Inc.

www.vicominfinity.com Booth 14

Solution Center Exhibit Guide



Platinum Sponsor

Brocade Booth 40

Gold Sponsors

Cisco Systems Booth 4
 Emulex Booth 48
 IBM System x Rack and Power Infrastructure Booth 52
 Novell, Inc. Booth 50
 VMware, Inc. Booth 46

Silver Sponsors

Broadcom. Booth 54
 IBM DDS6/DAT160 Tape Drive. Booth 8
 Juniper Networks Booth 10
 ORSY Software Booth 2

Event Sponsor

IBM Systems Lab Services and Training Booth 16

Exhibitors

21st Century Software, Inc. Booth 34
 Dino Software Corporation. Booth 30
 IBM Destination z Booth 27
 IBM iDoctor for IBM i Booth 26
 IBM Storage Division Booth 28
 IBM Storage Media Booth 17
 IBM System x & BladeCenter. Booth 56
 Imation Corp. Booth 36
 Midrange Performance Group Booth 12
 Optica Technologies. Booth 1
 QLogic Corporation Booth 7
 Red Hat Booth 39
 SHARE Booth 38
 SMART Modular Technologies. Booth 32
 Software Engineering of America. Booth 13
 UNICOM Systems, Inc. Booth 58
 Velocity Software, Inc. Booth 33
 Vicom Infinity, Inc. Booth 14

Unlock your technology investments with IBM Systems Training

Featuring new, updated and up-and-coming IBM® Power Systems™, IBM System x® and IBM BladeCenter®, IBM System z® and IBM System Storage® courses



COURSE NAME	Classroom U.S. Course Code	Instructor-led Online U.S. Course Code	Status
Introduction to Storage Networking	SN700		Updated
Planning and Implementing a Storage Area Network (SAN)	SN711		Updated
IBM Storwize V7000 Implementation Workshop	SSE00		NEW
Converged SONAS	SSD0		NEW
Enabling IBM i5/OS® Network Security	AS180		Updated
IBM Systems Director for IBM i - ILO	OV060		Updated
IBM Power Systems IBM i V7R1 Update	OS180	OV180	NEW
IBM i Administration and Control	OL190	OV190	Updated
IBM i Security Concepts and Implementation	OL500	OV500	Updated
IBM i Recovery and Availability Management	OL510	OV510	Updated
Backup, Recovery and Media Services (BRMS) for IBM i	AS280	OV280	Updated
IBM DB2® and SQL for IBM i School	OD470	OV470	Updated
Advanced System Operator Workshop for IBM i	AS270	OV270	Updated
Control Language Programming Workshop for IBM System i®	OL210	OV210	Updated
Performance Analysis and Capacity Planning for IBM i	OL660	OV660	Updated
IBM PowerHA® SystemMirror 7 Planning, Implementation, Customization and Basic Administration	AN61	AX61	NEW
IBM POWER7® Systems and IBM AIX® 7.1 Differences Workshop	AN080	AX080	NEW
What's New in Power Systems for AIX	AN070	AX070	Updated
PowerHA for AIX II: Extended Administration and Problem Determination	AN420	AX420	Updated
PowerHA for AIX II: Extended Administration and PD	AN62	AX62	NEW
PowerHA for AIX II: Administration and PD	AN65	AX65	NEW
PowerHA for AIX II: PD	AN66	AX66	NEW
IBM GPFS™ System Administration	AN810	AX810	NEW
PowerHA for AIX: Migration and Extended Administration	AN450	AX450	Updated
PowerHA for AIX: Problem Determination Workshop	AN460	AX460	Updated
Power Systems Tech Support for IBM AIX and Linux - ILO	AT080		NEW
AIX Network Installation Manager (NIM): Configuring a NIM Master	AT980		NEW
AIX Network Installation Manager (NIM) II: Installing AIX on NIM clients	AQ520		NEW
PowerHA SystemMirror V7.1 New Features	AQ100		NEW
Power Systems for AIX IV: Performance Management	AN510	AX510	Updated
IBM Systems Director 6.2 for Power Systems I: Installation and Management	AN940	AX940	NEW
Systems Director VMControl 2.3 for a Cloud Computing Infrastructure	AN960	AX960	NEW
Power Systems for AIX - Virtualization II: Advanced PowerVM and Performance	AN310	AX310	Updated
Power Systems for AIX - Virtualization I: Implementing Virtualization	AN300	AX300	Updated
IBM System x Technical Principles	XTR11		Updated
IBM Systems Director 6.2 for IBM System x and BladeCenter Servers	XTRD1		NEW
IBM BladeCenter Fundamentals	XTR30		Updated
IBM BladeCenter E - Workshop	XTR32		Updated
IBM eX5 Enterprise Servers - Architecture and Virtualization	XTR52		NEW
Cloud Architecture Overview and Workshop	XTR60	XTV60	NEW
z/OS Computer Operations e-Learning Bundle	EZ110		Updated
z/OS Mainframe Programming e-Learning Bundle	EZ120		Updated
IBM zEnterprise System: A Technical Introduction	ESA01	EZA01	NEW
IBM System z Hardware Management Console (HMC) Operations	ES240	EZ240	Updated

ENROLL TODAY! ibm.com/systems/training

IBM, the IBM logo, IBM.com, AIX, BladeCenter, DB2, GPFS, i5/OS, POWER7, PowerHA, Power Systems, System i, System Storage, System x, System z are trademarks or registered trademarks of International Business Machines Corporation in the United States, other countries, or both. A current list of IBM trademarks is available on the Web at "Copyright and trademark information" at: ibm.com/legal/copytrade.shtml. Linux is a registered trademark of Linus Torvalds in the United States, other countries, or both.

IBM Power and System z Symposia — Agenda-at-a-Glance

Tuesday		Wednesday		Thursday		Friday	
Time	Activity	Time	Activity	Time	Activity	Time	Activity
7:00 – 8:30	Breakfast	7:00 – 9:00	Breakfast	7:00 – 9:00	Breakfast	7:00 – 9:00	Breakfast
8:30 – 10:00	Opening General Session	9:00 – 10:15	Elective Sessions/Labs	9:00 – 10:15	Elective Sessions/Labs	9:00 – 10:15	Elective Sessions/Labs
10:00 – 10:30	Coffee Break	10:15 – 10:30	Coffee Break	10:15 – 10:30	Coffee Break	10:15 – 10:30	Coffee Break
10:30 – 11:45	Elective Sessions/Labs	10:30 – 11:45	Elective Sessions/Labs	10:30 – 11:45	Elective Sessions/Labs	10:30 – 11:45	Elective Sessions/Labs
11:45 – 1:00	Lunch	11:45 – 1:00	Lunch	11:45 – 1:00	Lunch	11:45 – 1:00	Lunch
1:00 – 2:15	Elective Sessions/Labs	1:00 – 2:15	Elective Sessions/Labs	1:00 – 2:15	Elective Sessions/Labs	1:00 – 2:15	Elective Sessions/Labs
2:15 – 2:30	Walking Break	2:15 – 2:30	Walking Break	2:15 – 2:30	Walking Break	2:15 PM	Conference Concludes
2:30 – 3:45	Elective Sessions/Labs	2:30 – 3:45	Elective Sessions/Labs	2:30 – 3:45	Elective Sessions/Labs	2:15 PM	Conference Concludes
3:45 – 4:15	Coffee Break	3:45 – 4:15	Coffee Break	3:45 – 4:15	Coffee Break	2:15 PM	Conference Concludes
4:15 – 5:30	Elective Sessions/Labs	4:15 – 5:30	Elective Sessions/Labs	4:15 – 5:30	Elective Sessions/Labs	2:15 PM	Conference Concludes
5:30 – 7:30	Solution Center Reception	5:30 – 7:30	Solution Center Reception	5:30 – 6:30	Solution Center Reception	2:15 PM	Conference Concludes
Conference Registration 3:00 – 7:00							
		Certification		Certification		Certification	
		Registration / Information		Registration / Information		Registration / Information	

Hilton Orlando

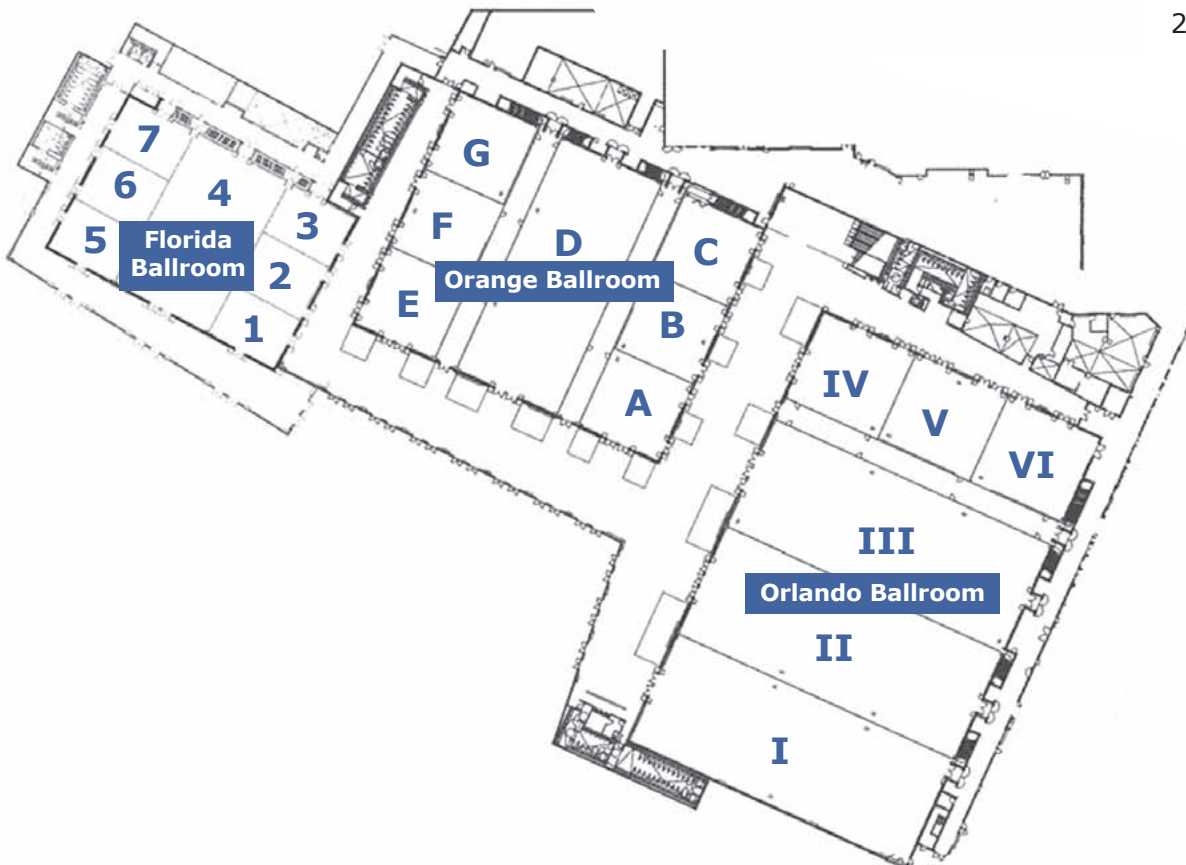
Lobby Level



Lobby Level Meeting Rooms

- 1 Lake Mizell A/B
- 2 Lake Nona A/B
- 3 Lake Sheen A/B
- 4 Lake Highland A/B
- 5 Lake Lucerne
- 6 Lake Eola A/B
- 7 Lake Louise A/B
- 8 Lake Virginia A/B
- 9 Lake Florence A/B
- 10 Lake Monroe A/B
- 11 Lake Down A/B
- 12 Lake George A/B
- 13 Lake Hart A/B
- 14 Lake Concord A/B
- 15 Spring Lake
- 16 Sand Lake
- 17 Ruby Lake
- 18 Pocket Lake
- 19 Conway Lake
- 20 Clear Lake
- 21 Turkey Lake

Lower Level





ACHIEVING YOUR STORAGE GOALS WAS NEVER EASIER!

Sign Up Today!

www.ibm.com/storage/tapemediarewards

**NOW
INCLUDING**
LTO Ultrium 5



The IBM Tape Media Rewards Program is an end-user loyalty program where the benefits of purchasing IBM tape media extend even further than the security of your stored data. Purchase IBM 3592 or LTO Ultrium data cartridges and earn points for each purchase, which can be redeemed for a variety of merchandise and gift certificates that enhance your business environment!