



IBM **Spectrum Protect**

**IBM Spectrum Protect™ for
Data Retention (SSAM) - Introduction**

Version 13



Agenda

- ▶ **Introduction to archiving**

 - Introduction to Spectrum Protect for Data Retention

 - Deployment guidance

Archiving context and requirements



Reasons

- Data Growth
- Regulatory Duty
- Preservation of Information



Challenges

- Long Lifecycle
- Technological Progress



Requirements

- Cost and Efficiency
- Scalability, Flexibility
- Compliance
- Operative Requirements

Archive solution architecture

Archive Sources



E-Mails



Files



ERP



Database



PACS



Paper



Voice

Data is generated, updated, used and must eventually be archived

Archive Management

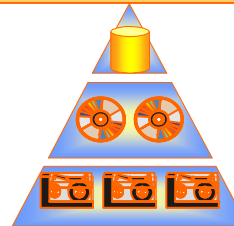
Connectors and converters

Enterprise Content Management

(indexing, search, discovery, information management)

Archive Storage

Archive Storage



Data protection
Compliance
ILM / Migration

Agenda

Introduction to archiving

▶ **Introduction to Spectrum Protect for Data Retention**

Deployment guidance

IBM Archive storage evolution

IBM DR450/DR550

IBM Information Archive

Spectrum Protect for Data Retention Solution (SSAM)



Bundled solution with **TSM-DR** on AIX including disk and network

Product with **SSAM** on Linux including hardware, software and GUI

Software defined solution based on SSAM and later **SP-DR**, full cloud support

TSM for Data Retention → System Storage Archive Manager → Spectrum Protect for Data Retention

2005

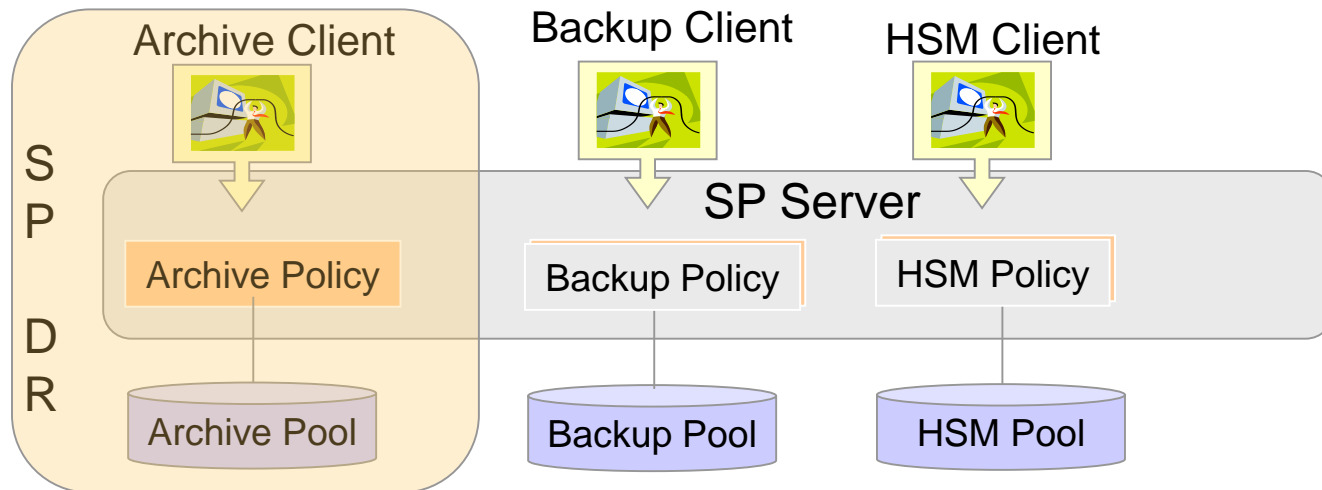
2010

2013

Future

What is Spectrum Protect for Data Retention (SP-DR)?

SP-DR is a special variation of Spectrum Protect (TSM)



➔ Spectrum Protect for Data Retention (SP-DR) is made for archiving and has been assessed for compliance by an independent auditor

Spectrum Protect for Data Retention characteristics

- Spectrum Protect for Data Retention is variation of Spectrum Protect server
 - Does not accept data from TSM backup and HSM client
 - Does not support TSM node replication

- SP-DR supports archiving via TSM API (and B/A client)
 - TSM API supports event based retention and deletion hold
 - TSM API works session and transaction oriented
 - TSM API supports encryption and compression

- SP-DR prevents deletion of data
 - Via data interface (TSM API)
 - Deletion only possible via Retention policies
 - Via admin interface
 - Delete commands are not honored for archived data

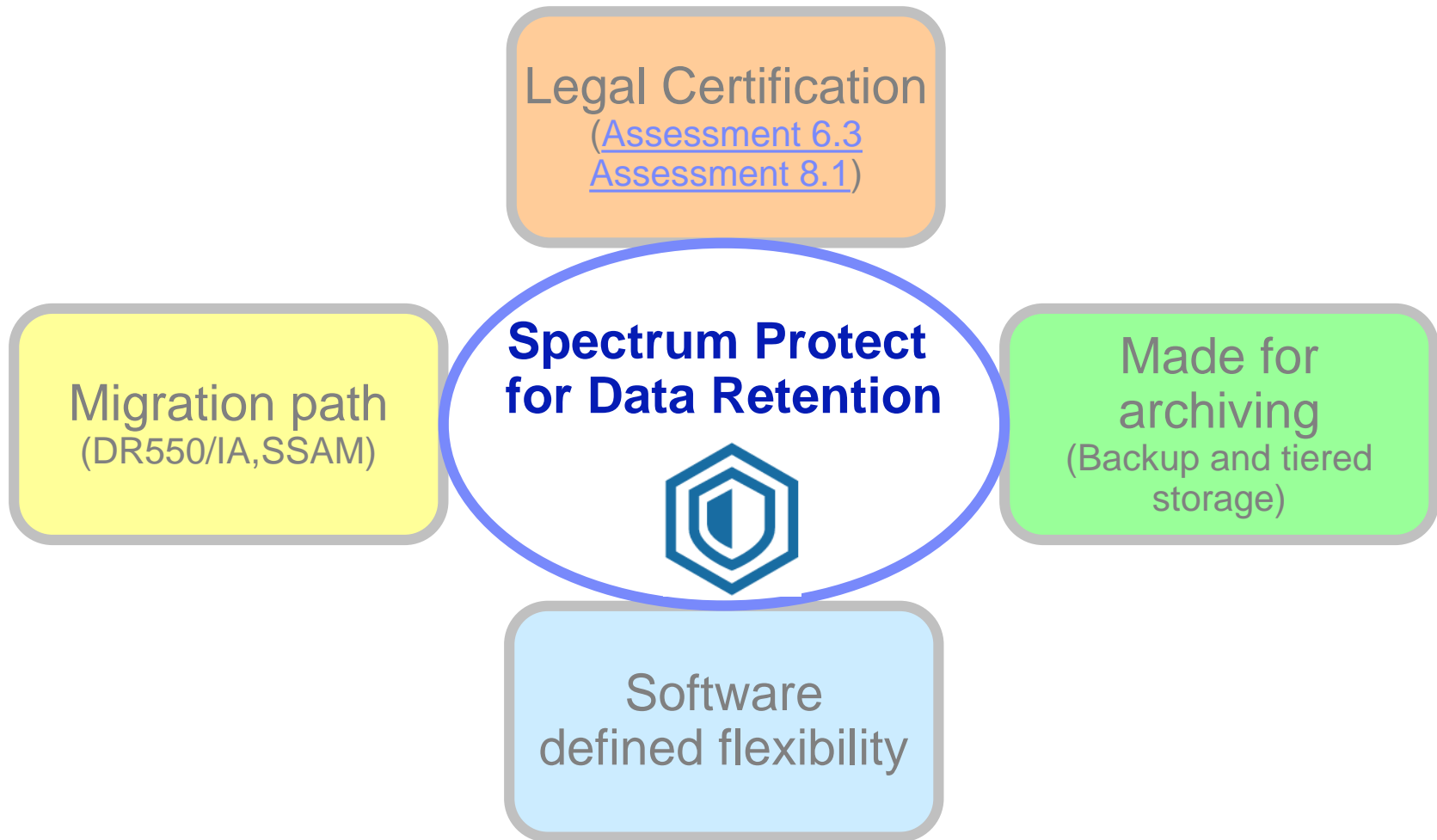
➔ Spectrum Protect for Data Retention is made for compliant archiving

Differences between SP and SP-DR

- SP-DR is enabled on a empty SP server via option and license

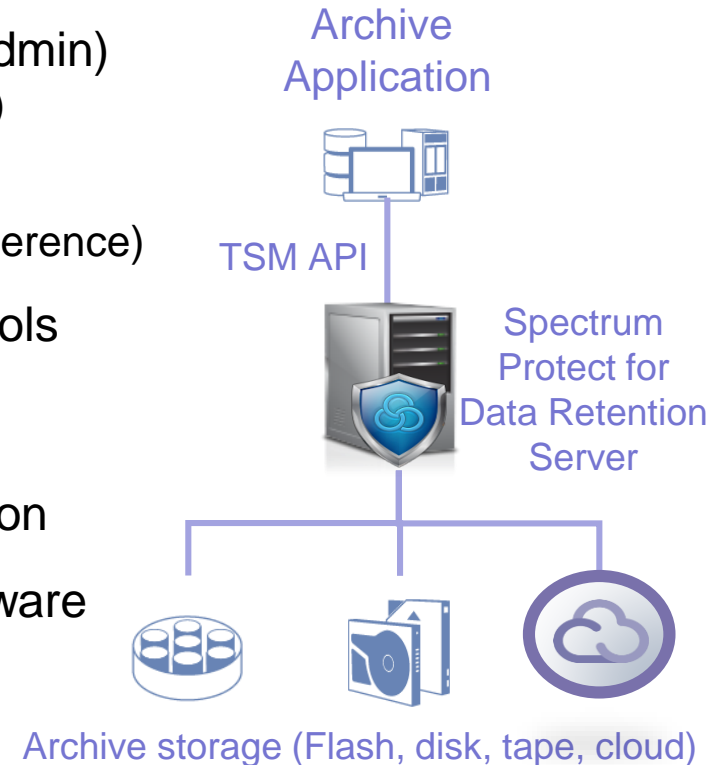
	Spectrum Protect for Data Retention	Spectrum Protect
Clients	Archiving via API and B/A client	backup and archive via API and B/A client, HSM
Data ingest	archive	Archive, backup, LAN free, HSM, NDMP, etc
Admin delete	No	Yes
Client delete	No	Yes
Enforce retention	No retention decrease	Can increase or decrease
Rename object	No	Yes
Node replication	No	Yes
Server-to-Server	Only Library Sharing	Everything

SP-DR solution offer additional values for archiving



SP-DR solution architecture - Overview

- SP-DR prevents deletion and changes (data and admin)
 - Internationally certified for compliance (see reference)
- Supports backup and migration to WORM tape
 - IBM WORM Tape is assessed for compliance (see reference)
- Facilitates data deduplication and cloud storage pools
 - Cloud storage on-or off-premises
- Business continuity through clustering and replication
- Software defined storage – flexible choice for hardware
- Scalability in regard to capacity and performance



What's new with SP-DR version 8.1

- Support for container pools
 - Inline deduplication on local directory or cloud object storage pools

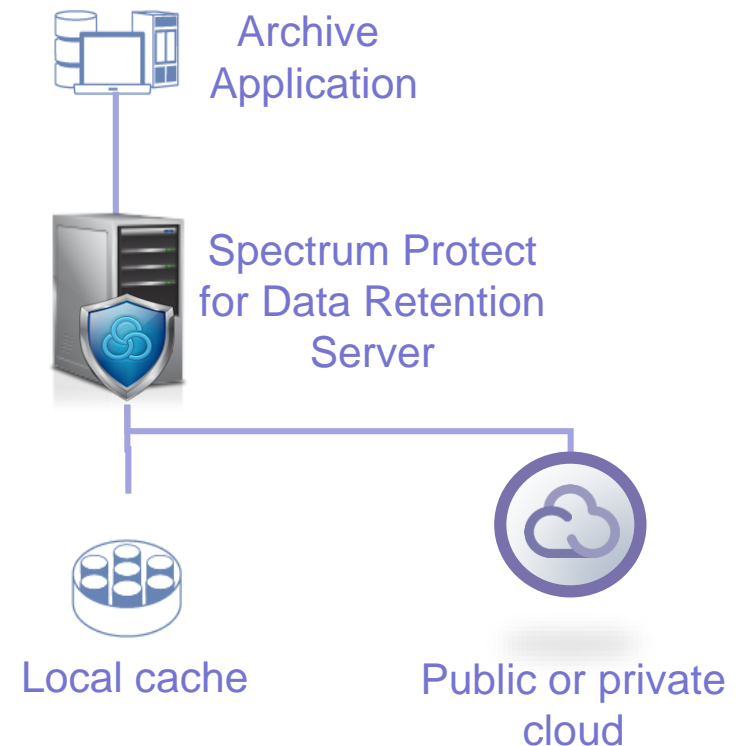
- Container storage pool protection
 - To another server or to tape (protect storage pool)
 - Only for directory container
 - Node replication is not supported

- Operation Center for administration and monitoring
 - Can be used in combination with normal Spectrum Protect servers

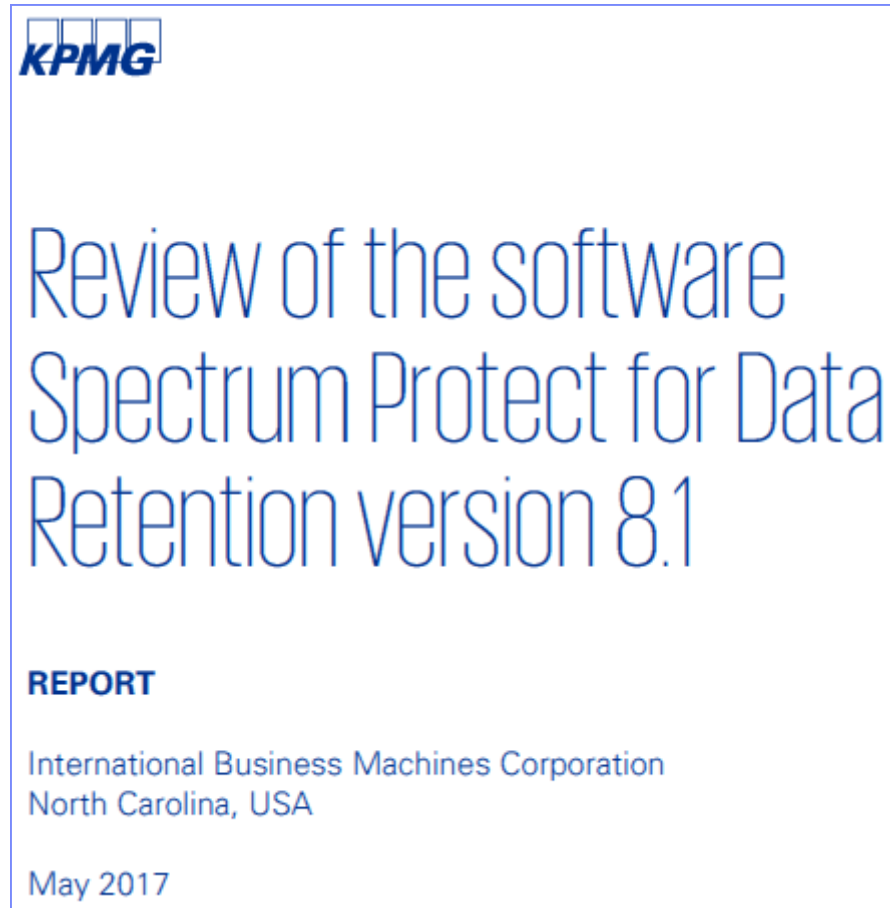
- In addition all functions in SSAM 6.3 are supported by SP-DR 8.1
 - Except: SP-DR 8.1 does not allow to rename objects via the API (dsmRenameObj)

Hybrid Cloud solution

- SP-DR supports cloud container pools
 - Cloud container pools can be on-or off-premises
- Facilitates hybrid cloud solutions
 - SP-DR server with local cache is on-premises
 - Cloud storage is off-premises
 - Archive data is cached and sent to the cloud
- Hybrid cloud can also be used for directory container pool protection
 - Protect storage pool can be directed to a server in the cloud (Node replication is not supported)
- Supports all cloud pool supported by Spectrum Protect ([link](#))



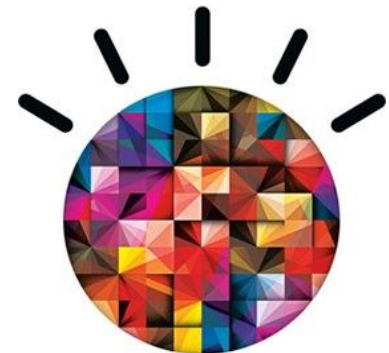
SP-DR solution – International certification



- According to US SEC17a-4(f), German and Swiss tax and trade laws
- Link to certificate: <http://www.kpmg.de/bescheinigungen/RequestReport.aspx?56B00E998BA14B31AF2E0F0FB63F0034>

Spectrum Protect for Data Retention 8.1- Benefits

- Internationally certified for compliance ([link](#))
- Build-in cloud object storage and tape support
- Seamless upgrade path from SSAM 6.3
 - Direct migration path from DR550, IA and SSAM 5
- Software defined flexibility
 - Supports a variety of server and storage platforms
- Made for compliant archiving of many different data types



Agenda

Introduction to archiving

Introduction to Spectrum Protect for Data Retention

▶ **Deployment guidance**

Planning

- SP-DR is supported on all server platforms supported by SP ([link](#))
- SP-DR server licensing is typically based on capacity
- Plan for backing up data and metadata
 - For legacy pools use tape copy pools
 - For container pools use protect storage pool (tape or container pool)
- Dual site solutions alternatives
 - File system replication (e.g. Spectrum Scale)
 - DB2 HADR in combination with file system or storage replication
 - Use cluster software when appropriate (PowerHA, TSMCluster)
 - To facilitate quick failover

Client and Server compatibility

- See: <http://www-01.ibm.com/support/docview.wss?uid=swg21053218>
Example:

IBM SPECTRUM PROTECT CLIENT SUPPORT	
includes the Backup-Archive, API, UNIX HSM, and Web clients that are compatible with, and currently supported with, IBM Spectrum Protect Servers and Storage Agents.	
IBM Spectrum Protect Client Version	Supported IBM Spectrum Protect Server and Storage Agent Versions
8.1.2	8.1, 7.1
8.1.0	8.1, 7.1, 6.3.x ¹
7.1	8.1, 7.1, 6.3.x ¹
6.4	8.1, 7.1, 6.3.x ¹
6.3 ²	8.1, 7.1, 6.3.x ¹

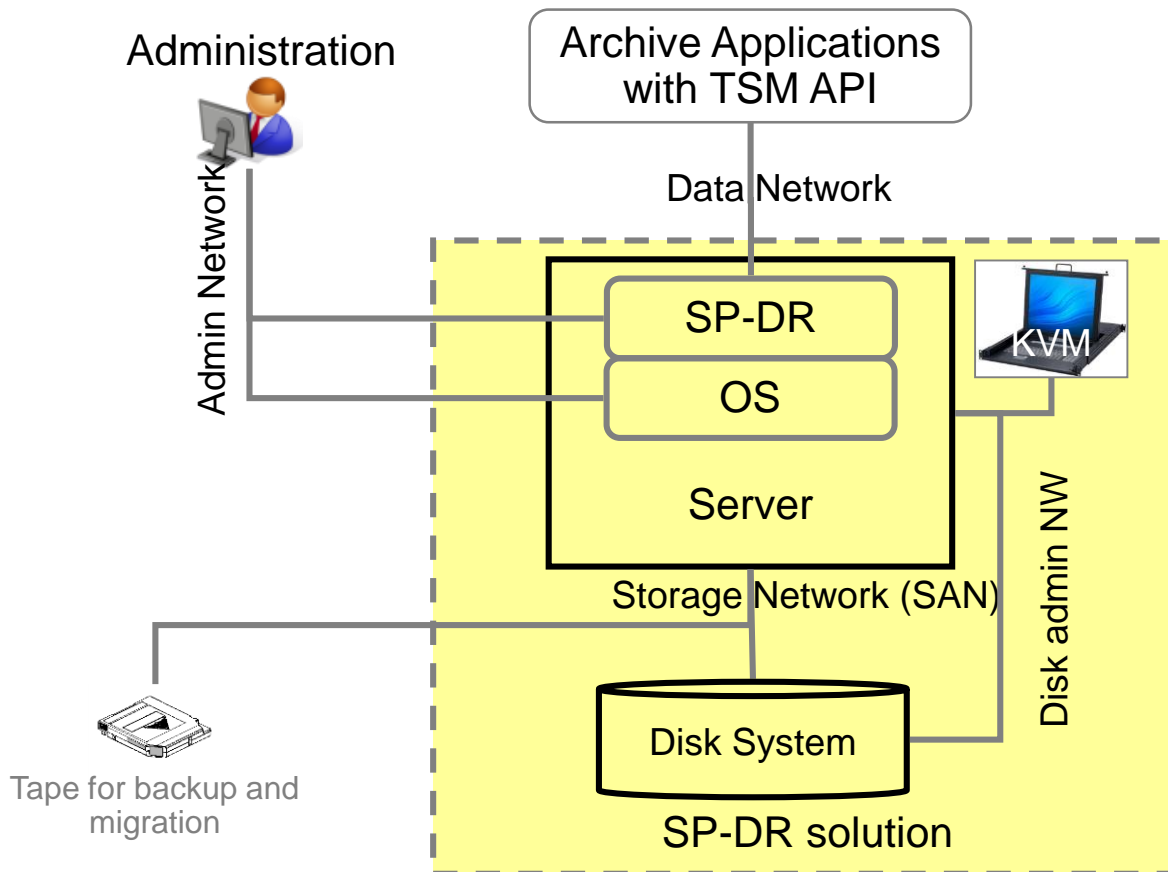
- Check with application vendor if they support SP-DR V8.1

SP-DR solution design and sizing

- Understand requirements in regard to performance and capacities
- Use Spectrum Protect blue prints to size server and storage ([link](#))
 - Consider placing SP-DR DB on fast storage when using deduplication
- Implement SP-DR solution according to best practices
 - Do not forget to activate data retention before archiving any data
 - Harden the server operating system
- General guidance
 - When using cloud storage pools as primary storage then take latency, retrieval cost and space reclamation limitations into account

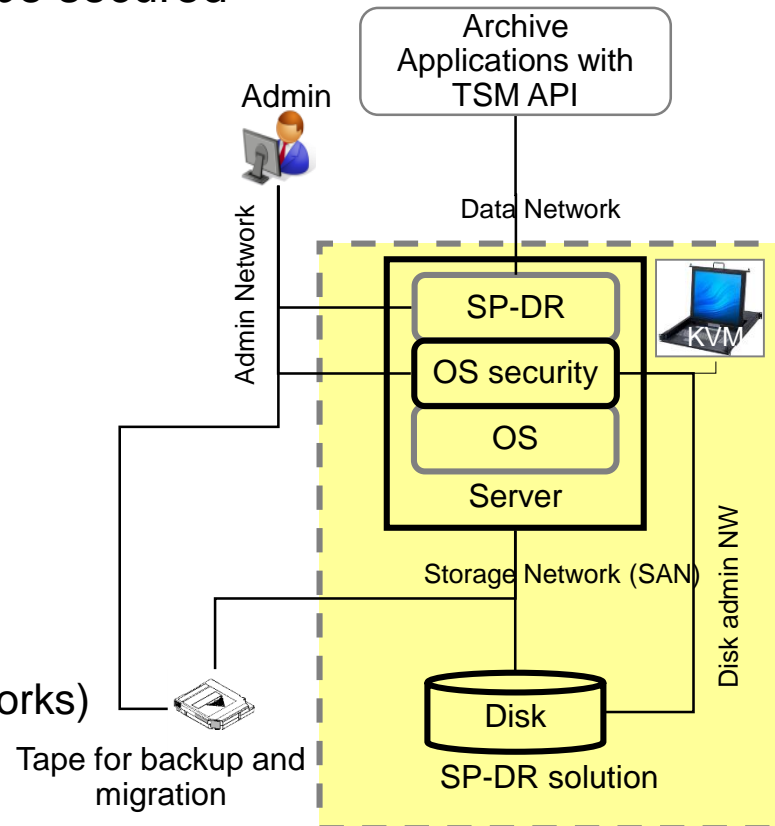
SP-DR solution - Building blocks

- SP-DR is software defined and provides flexibility for hardware deployments



SP-DR solution – System security

- While SP-DR prevent deletion and changes the entire solution with server, network and storage must be secured
- Common practices:
 - Use sudo to prevent direct root logon and facilitate named user logon
 - Log and audit OS admin activity
 - Use firewall to control TCP/IP ports
 - Use secure NTP source to protect server time
 - Log and audit SP-DR admin activities (actlog)
 - Backup SP-DR DB and STG
 - Use appropriate retention policies
 - Manage access to network and disk (private networks)
 - Monitor system health (operation center)



Migration path from SSAM 6.3 to SP-DR 8.1

- Upgrading from SSAM 6.3 to SP-DR 8.1 is a simple software upgrade
- Spectrum Protect cross platform migration is also possible ([link](#))
 - From AIX, HP-UX, Solaris to Linux
- Export server from SSAM 6.3 to SP-DR 8.1 is possible
 - However file space on source may be locked during migration causing read errors
 - Consider normal upgrade or cross-platform migration
 - DR550 and Information Archive can be migrated to SP-DR 8.1 using export server

Source	Target	Migration method
DR550, SSAM 5.x, IA	SP-DR 8.1	Export server
SSAM 6.3.x, 7.1.x	SP-DR 8.1, same platform	Software upgrade
SSAM 6.3.x, 7.1.x	SP-DR 8.1, other platform	Cross platform migration

Thank You

External References

- KPMG assessment for SP-DR 8.1:
<http://www.kpmg.de/bescheinigungen/RequestReport.aspx?56B00E998BA14B31AF2E0F0FB63F0034>
- KPMG assessment for SSAM 6.3:
 - German: <http://www.kpmg.de/bescheinigungen/RequestReport.aspx?38014>
 - English: <http://www.kpmg.de/bescheinigungen/RequestReport.aspx?38076>
- KPMG Certification TS1120 WORM Tape:
http://www.kpmg.de/bescheinigung/ibmdeutschland/link_wormtape.html
- KPMG Certification LTO-3 WORM Tape:
http://www.kpmg.de/bescheinigung/ibmdeutschland/link_wormtape_lto.html
- Cross platform migration with Spectrum Protect
<https://www.ibm.com/developerworks/community/wikis/home?lang=en#!/wiki/Tivoli%20Storage%20Manager/page/Migrating%20Tivoli%20Storage%20Manager%20Servers%20from%20one%20Operating%20System%20to%20another>
- Cloud provider supported by Spectrum Protect.
<https://www.ibm.com/developerworks/community/wikis/home?lang=en#!/wiki/Tivoli%20Storage%20Manager/page/Cloud-container%20storage%20pools%20FAQs>
- Spectrum Protect client and server compatibility
http://www-01.ibm.com/support/docview.wss?rs=663&context=SSGSG7&q1=client+server+compatibility&uid=swg21053218&loc=en_US&cs=utf-8&lang=en
- Spectrum Protect server blueprints
<https://www.ibm.com/developerworks/community/wikis/home?lang=en#!/wiki/Tivoli%20Storage%20Manager/page/IBM%20Spectrum%20Protect%20Blueprints>
- Whitepaper: Long term archiving with IBM Spectrum Protect for Data Retention
<http://www-01.ibm.com/support/docview.wss?uid=tss1wp102451>

References

- KPMG assessment for SP-DR 8.1:
<http://www.kpmg.de/bescheinigungen/RequestReport.aspx?56B00E998BA14B31AF2E0F0FB63F0034>
- KPMG assessment for SSAM 6.3:
German: <http://www.kpmg.de/bescheinigungen/RequestReport.aspx?38014>
English: <http://www.kpmg.de/bescheinigungen/RequestReport.aspx?38076>
- Reference Architecture for SSAM solutions:
IBM: <http://w3.ibm.com/support/techdocs/atmastr.nsf/WebIndex/WP102345>
BP: https://www-304.ibm.com/partnerworld/wps/servlet/ContentHandler/tech_WP102345
- Whitepaper: Solving the long term archiving challenges with IBM System Storage Archive Manager solutions
External: <http://www.ibm.com/support/techdocs/atmastr.nsf/WebIndex/WP102451>
IBM: <https://w3-connections.ibm.com/files/app#/file/d671a24b-c2ae-4414-a6c0-0096d3bf41b7>
- Introduction to migration from DR550 to SSAM 6.3:
IBM: <http://w3.ibm.com/support/techdocs/atmastr.nsf/WebIndex/PRS5049>
BP https://www-304.ibm.com/partnerworld/wps/servlet/ContentHandler/tech_PRS5049
- Introduction to migration from IA to SSAM 6.3:
IBM: <http://w3.ibm.com/support/techdocs/atmastr.nsf/WebIndex/PRS5092>
BP: https://www-304.ibm.com/partnerworld/wps/servlet/ContentHandler/tech_PRS5092
- Migration enablement service:
IBM: <http://w3.escc.mainz.de.ibm.com/ESCC4U/EUSTO128>
BP: email to: stg.labservices@de.ibm.com
- SSAM interoperability with applications:
<https://www-304.ibm.com/software/brandcatalog/ismlibrary/search#rc=TivoliSystemStorageArchiveManager:System%20Storage%20Archive%20Manager>
- KPMG Certification TS1120 WORM Tape:
http://www.kpmg.de/bescheinigung/ibmdeutschland/link_wormtape.html
- KPMG Certification LTO-3 WORM Tape:
http://www.kpmg.de/bescheinigung/ibmdeutschland/link_wormtape_lto.html
- Guidance for implementation with SnapLock:
https://www.ibm.com/developerworks/community/blogs/storageneers/entry/setting_up_system_storage_archive_manager_with_snaplock_storage_pools?lang=en

Disclaimer

- This information is provided on an "AS IS" basis without warranty of any kind, express or implied, including, but not limited to, the implied warranties of merchantability and fitness for a particular purpose. Some jurisdictions do not allow disclaimers of express or implied warranties in certain transactions; therefore, this statement may not apply to you.
- This information is provided for information purposes only as a high level overview of possible future products. PRODUCT SPECIFICATIONS, ANNOUNCE DATES, AND OTHER INFORMATION CONTAINED HEREIN ARE SUBJECT TO CHANGE AND WITHDRAWAL WITHOUT NOTICE.
- USE OF THIS DOCUMENT IS LIMITED TO SELECT IBM PERSONNEL AND TO BUSINESS PARTNERS WHO HAVE A CURRENT SIGNED NONDISCLOSURE AGREEMENT ON FILE WITH IBM. THIS INFORMATION CAN ALSO BE SHARED WITH CUSTOMERS WHO HAVE A CURRENT SIGNED NONDISCLOSURE AGREEMENT ON FILE WITH IBM, BUT THIS DOCUMENT SHOULD NOT BE GIVEN TO A CUSTOMER EITHER IN HARDCOPY OR ELECTRONIC FORMAT.

Important notes:

- IBM reserves the right to change product specifications and offerings at any time without notice. This publication could include technical inaccuracies or typographical errors. References herein to IBM products and services do not imply that IBM intends to make them available in all countries.
- IBM makes no warranties, express or implied, regarding non-IBM products and services, including but not limited to Year 2000 readiness and any implied warranties of merchantability and fitness for a particular purpose. IBM makes no representations or warranties with respect to non-IBM products. Warranty, service and support for non-IBM products is provided directly to you by the third party, not IBM.
- All part numbers referenced in this publication are product part numbers and not service part numbers. Other part numbers in addition to those listed in this document may be required to support a specific device or function.
- MHz / GHz only measures microprocessor internal clock speed; many factors may affect application performance. When referring to storage capacity, GB stands for one billion bytes; accessible capacity may be less. Maximum internal hard disk drive capacities assume the replacement of any standard hard disk drives and the population of all hard disk drive bays with the largest currently supported drives available from IBM.

IBM Information and Trademarks

- The following terms are trademarks or registered trademarks of the IBM Corporation in the United States or other countries or both: the e-business logo, IBM, system x, system p, System Storage
- EMC Centera is a registered trademark of EMC Corporation
- NetApp SnapLock is a registered trademark of NetApp Corporation
- Other company, product, and service names may be trademarks or service marks of others.