

IBM Maximo Asset Management  
Version 7 Release 5

*Content Installer Enabler Guide*



**Note**

Before using this information and the product it supports, read the information in Notices.

**First Edition**

This edition applies to version 7, release 5, modification 0, level 0 of IBM Maximo Asset Management and to all subsequent releases and modifications until otherwise indicated in new editions.

© Copyright IBM Corporation 2013.

US Government Users Restricted Rights – Use, duplication or disclosure restricted by GSA ADP Schedule Contract with IBM Corp.

---

## Contents

<b>Content Installer Overview. . . . .</b>	<b>1</b>
Configuring the content installer. . . . .	1
Content Installer application . . . . .	2
Creating a content source . . . . .	3

Downloading and installing additional content . . . .	3
---	---

<b>Notices . . . . .</b>	<b>9</b>
--------------------------	----------



---

## Content Installer Overview

The ISM Content Installer is an application that is included in some products that are based on version 7.5 and higher of Tivoli's process automation engine. The application provides a way to view optional content that is compatible with the products that you installed and to import content packages from the Integrated Service Management (ISM) Library into your environment.

The products that are supported on Tivoli's process automation engine use various types of optional content that consists of artifacts and configurations that are not required for the product applications to operate properly. However, such content provides significant value either as samples or as templates that you can refine to meet your specific business needs. Examples of optional content include job plans, reports, roles, escalations, and start centers.

Some content is delivered with the product. You can choose whether to install this content when you install or upgrade your product. The built-in content for each product is carefully designed, tested, and supported. It is recommended that you use the built-in content to ensure that you adhere to best practices.

Between product releases, more content can be downloaded from other sources, primarily the Integrated Service Management Library. The content is also based on best practices for the products, but it is provided on an as-is basis. It is intended primarily for test or development environments and is not designed for production environments.

You can use the Content Installer application to import content packages available on the Integrated Service Management Library. In addition, you can obtain the content packages from other sources or locations, place them in a local folder that is accessible to the product on the server side, then import the package from that local folder location on the server.

This document describes how to enable and configure the ISM Content Installer application for IBM® Maximo® Asset Management Version 7.5.0 and other industry solutions and add-on components for IBM Maximo Asset Management.

The following tasks are required to configure and use the Content Installer application:

1. Configure Maximo Asset Management to implement the Content Installer application.
2. In the ISM Content Installer application, specify the URL that is the source for Maximo Asset Management content in the ISM Library.
3. In the ISM Content Installer application, download and install optional content into your product.

---

## Configuring the content installer

Before you can use the ISM Content Installer application to add optional content to your development or test environment, download the Content Installer Enabler from the ISM Library and configure your product to use the content installer functions.

## About this task

To download the Content Installer Enabler and configure your environment to implement the content installer function for your environment, complete the following steps.

### Procedure

1. Go to the Maximo Asset Management page in the ISM Library, download the compressed file for the Content Installer Enabler to a temporary location on your administrative workstation (the workstation that contains the installed Maximo directory structure), and extract the contents of the compressed file.
2. Ensure that users are logged out of Maximo Asset Management, and then access the application server administrative console and stop the MXServer server.
3. Copy the files in the Content Installer Enabler package to the following directory in your Maximo installation folder structure: *install\_home\tools\maximo*. The files are cumulative. Files are added, but no files are deleted.
4. Copy the license file for the ISM Content Installer application, ISMContent.pkg, into the *install\_home\tools\maximo\tools\maximo* directory.
5. From the *install\_home\tools\maximo* directory, run the appropriate installation script for your operating system:
  - UNIX or Linux users, run the shell script **pkginstall.sh**
  - Microsoft Windows users, run the windows batch file script **pkginstall.bat**
6. Rebuild and redeploy the Maximo EAR files.
7. Restart the Maximo Server.
8. To verify that the ISM Content Installer application functions correctly, log in to Maximo Asset Management and go to **System Configuration > ISM Content Installer**. By default, the application is available to users that belong to the MAXADMIN security group.

### Results

After you download and install the Content Installer Enabler, you can use the ISM Content Installer application in Maximo Asset Management to download and install content packages from the ISM Library.

---

## Content Installer application

You can use the Content Installer application to locate, download, and install content that is available for your product.

The Content Installer application is available in the System Configuration module. It contains the following tabs:

**List** The List tab displays a list of the IBM products that you installed for which content packages are available. To view the content packages that are available to download for a product, click the name of the product.

**Content** The Content tab displays a list of the content packages available for the product that you selected. For each package, you can view the name and description, as well as check boxes that indicate whether the package was

installed and whether your environment satisfies the prerequisites for installing the package. You can download and install the packages from this tab.

---


## Creating a content source

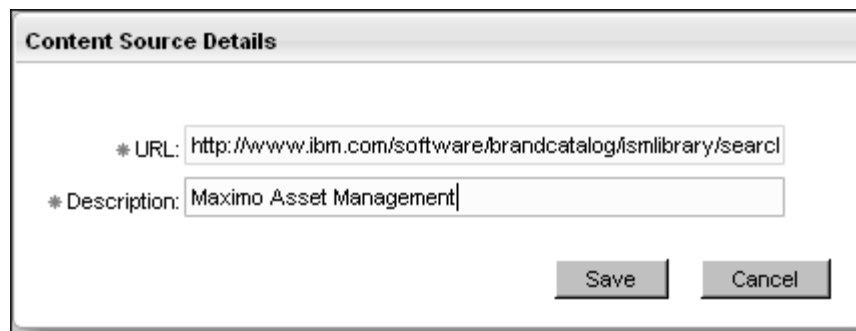
Before you can download content from the ISM Library, you have to create a content source. Creating a content source specifies the location for your product's content on the ISM Library site.

### About this task

To create a content source for your product, complete the following steps.

### Procedure

1. Log in to Maximo Asset Management as an administrator and select **System Configuration > ISM Content Installer** to open the ISM Content Installer application.
2. To create a content source, click .
3. In the **URL** field of the Content Source Details window, specify the URL for the catalog of the product whose content you want to download.



The image shows a dialog box titled "Content Source Details". It contains two text input fields. The first field is labeled "\* URL:" and contains the text "http://www.ibm.com/software/brandcatalog/ismlibrary/search". The second field is labeled "\* Description:" and contains the text "Maximo Asset Management". At the bottom right of the dialog box, there are two buttons: "Save" and "Cancel".

Use the following URL to find Maximo Asset Management content:

[http://www.ibm.com/software/brandcatalog/ismlibrary/resources/catalog?  
&client=IMAM&sortBy=update\\_ts\\_desc&rc=TivoliMaximoAssetManagement  
&rc=IBM\\_Tivoli\\_AssetType\\_ISMContentInstallerPack](http://www.ibm.com/software/brandcatalog/ismlibrary/resources/catalog?&client=IMAM&sortBy=update_ts_desc&rc=TivoliMaximoAssetManagement&rc=IBM_Tivoli_AssetType_ISMContentInstallerPack)

4. In the **Description** field, specify the name of the product catalog. This name is displayed in the ISM Content Installer application.
5. Save the content source.

---

## Downloading and installing additional content

You can use the ISM Content Installer application to locate, download, and install extra content from the ISM Library.

### About this task

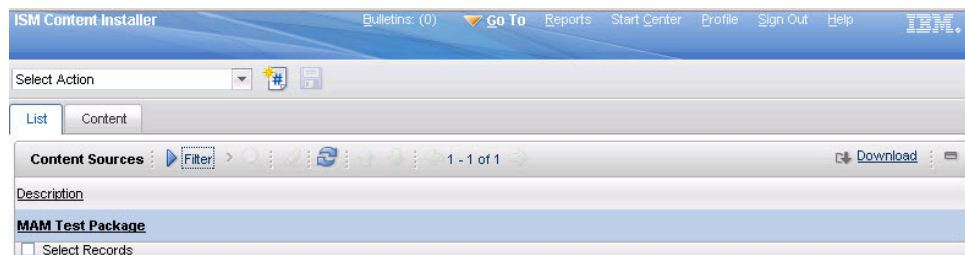
The following steps explain how to download and install content that is available for your product.

Installing a new version of content overwrites any previous versions. If you want to be sure not to overwrite existing content, you can specify a two-letter prefix for components on the **Replacements** tab. This prefix is prepended to the names of the components that are installed.

Make sure that you install content into a development or test environment and perform the necessary customization and verification to ensure that it is suitable for production use. Then, use your standard tools to move the tested content to your production environment.

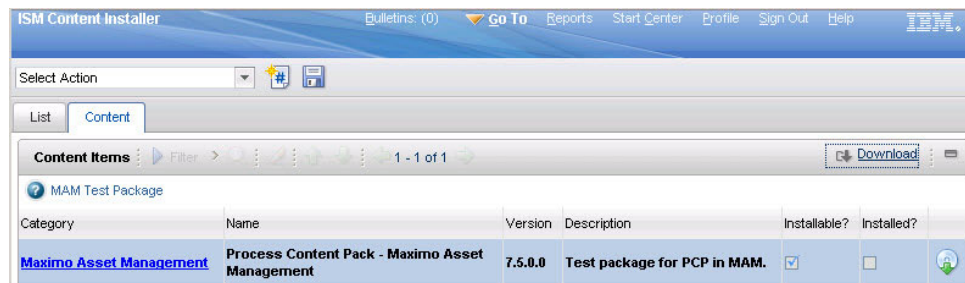
## Procedure


1. Click **System Configuration > ISM Content Installer** to open the ISM Content Installer application.
2. In the List tab of the ISM Content Installer application, click the name of the product for which you want to download content.



The Content tab displays a list of content packages available for the product.

3. Look at the **Installed** and **Installable** check boxes to verify that the package is not already installed and that your environment meets the package's prerequisites. A check in the **Installable** check box indicates that your installation meets the requirements for installing the content.



4. To download the content package, click the installation icon  on the for the package.
5. A warning message is displayed to remind you that installing this package might overwrite content that is already installed. Make sure that you backed up your data before you install new content. Click **Continue** on the warning panel when you are ready to proceed.





6. In the Install Content window, review the details about the content package and click **Download**.

**Install Content**

**Step 1**

Review the details of this package. When you are ready to begin the install process press the **Download** button.

**Package Information**

Name: Process Content Pack - Maximo Asset M

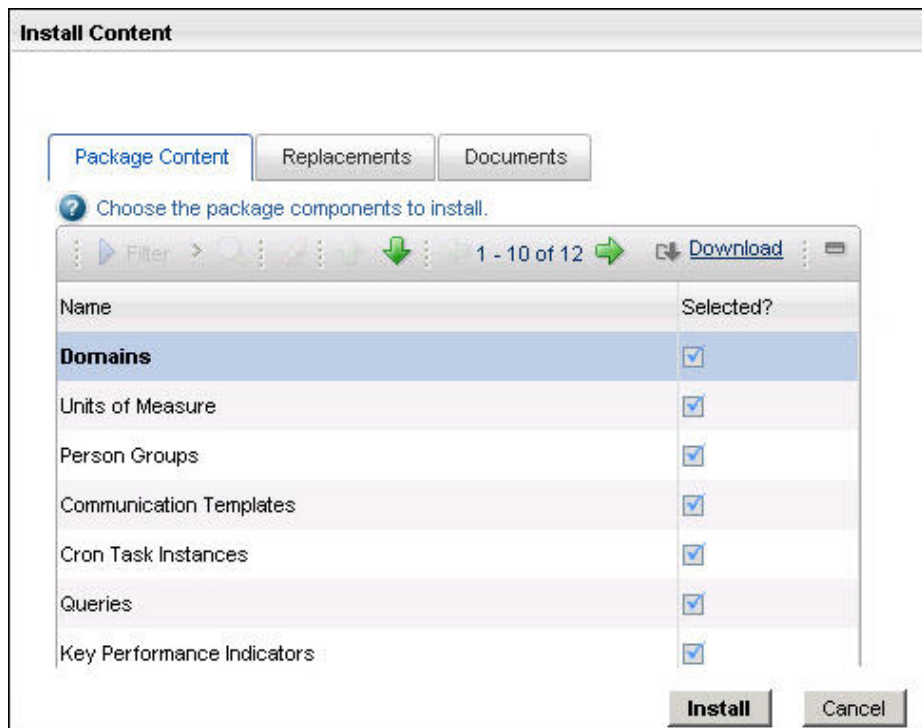
Version: 7.5.0.0

Description: Test package for PCP in MAM.

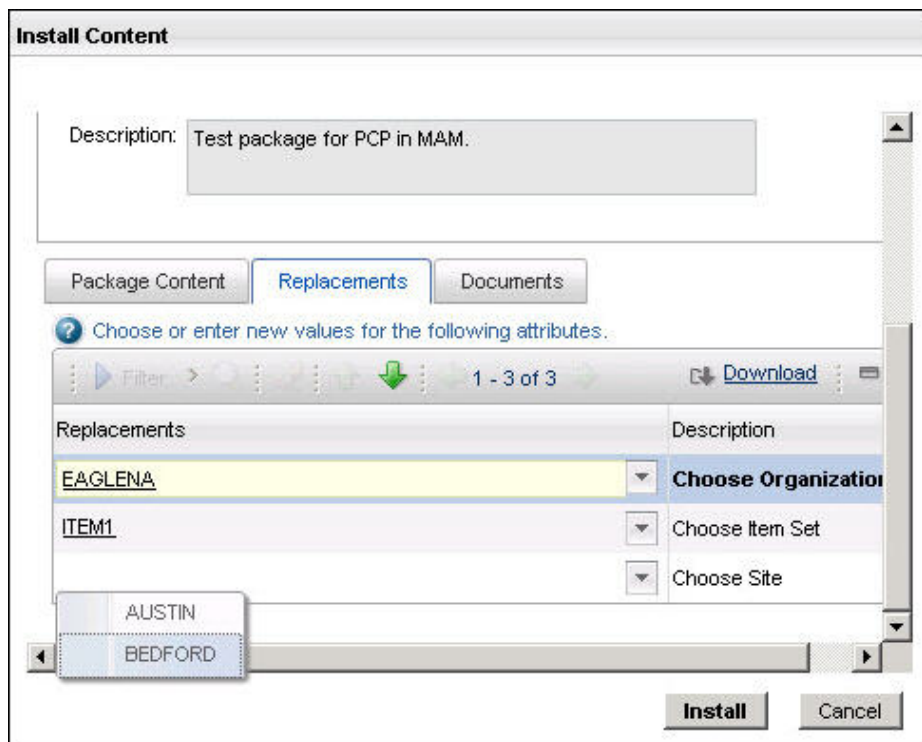
**Download** **Cancel**

Because some content packages require a license agreement, this panel might contain a license agreement. If it does, you must accept the agreement before you can download the package.

7. After the content is downloaded, in the Install Content window for Step 2, complete the following steps.
  - a. Some packages contain several components, and you can decide which components to install. If multiple components are displayed on the Package Content tab, clear the **Selected** check boxes for the components that you do not want to install.



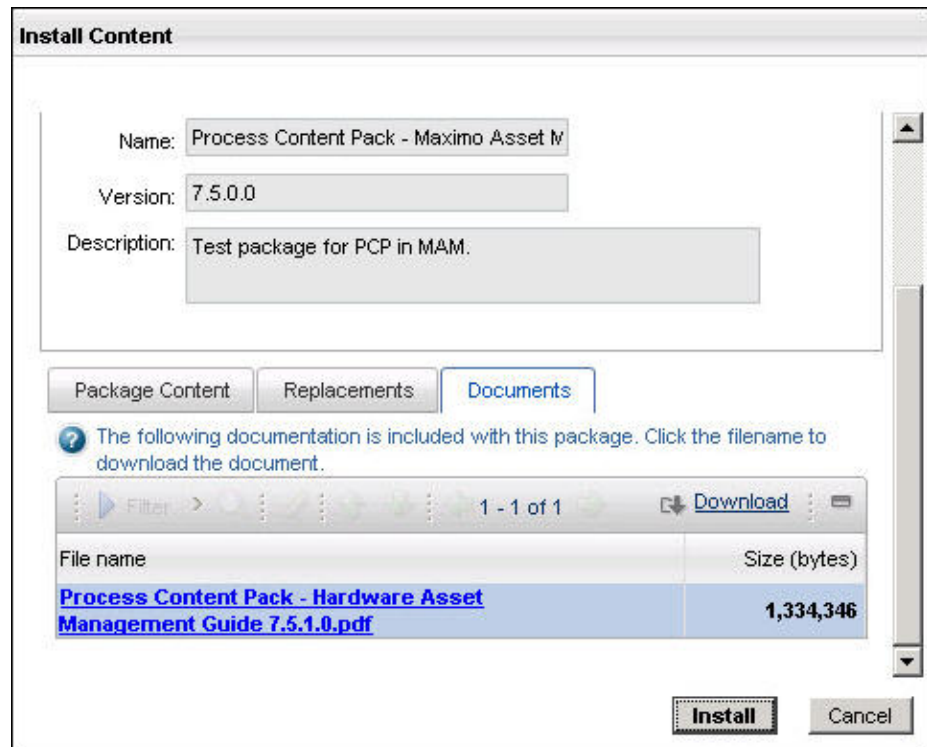
- b. On the Replacements tab, specify replacement values for attributes as needed.



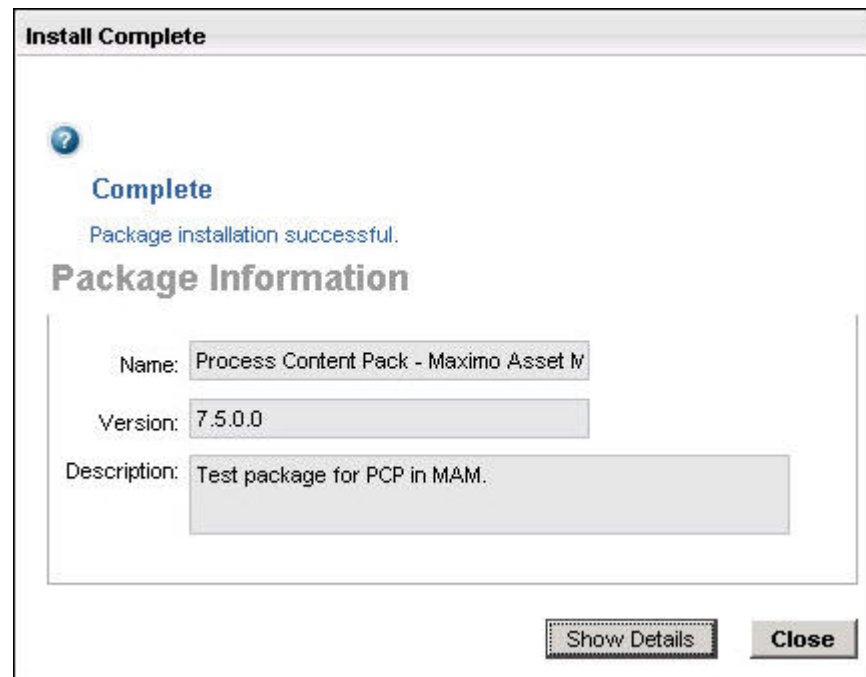
Some packages allow replacement values for content columns. This replacement is based on a pattern defined in the package xml file. A full replacement of an existing value or a partial pattern replacement (for example, a prefix) is possible. You can select from a predefined list of values, which is populated by a supplied SQL query, or you can specify a

value manually. The description column on the Replacements tab provides more information about the replacement option.

- c. On the Documents tab review and download documents as needed.



- d. After you complete the required actions on the Install Content window, click **Install** to install the selected components of the package. When the installation is complete, the Install Complete window is displayed.



- e. To view information about the installation, click **Show Details**. A message is displayed to specify what content was selected and whether any errors

occurred during installation. If an item of content fails to install successfully, all items belonging to that transaction are rolled back.

---

## Notices

This information was developed for products and services offered in the U.S.A. IBM may not offer the products, services, or features discussed in this document in other countries. Consult your local IBM representative for information on the products and services currently available in your area. Any reference to an IBM product, program, or service is not intended to state or imply that only that IBM product, program, or service may be used. Any functionally equivalent product, program, or service that does not infringe any IBM intellectual property right may be used instead. However, it is the user's responsibility to evaluate and verify the operation of any non-IBM product, program, or service.

IBM may have patents or pending patent applications covering subject matter described in this document. The furnishing of this document does not give you any license to these patents. You can send license inquiries, in writing, to:

IBM Director of Licensing  
IBM Corporation  
North Castle Drive  
Armonk, NY 10504-1785 U.S.A.

For license inquiries regarding double-byte (DBCS) information, contact the IBM Intellectual Property Department in your country or send inquiries, in writing, to:

Intellectual Property Licensing  
Legal and Intellectual Property Law  
IBM Japan, Ltd.  
19-21, Nihonbashi-Hakozakicho, Chuo-ku  
Tokyo 103-8510, Japan

**The following paragraph does not apply to the United Kingdom or any other country where such provisions are inconsistent with local law :**

INTERNATIONAL BUSINESS MACHINES CORPORATION PROVIDES THIS PUBLICATION "AS IS" WITHOUT WARRANTY OF ANY KIND, EITHER EXPRESS OR IMPLIED, INCLUDING, BUT NOT LIMITED TO, THE IMPLIED WARRANTIES OF NON-INFRINGEMENT, MERCHANTABILITY OR FITNESS FOR A PARTICULAR PURPOSE.

Some states do not allow disclaimer of express or implied warranties in certain transactions, therefore, this statement might not apply to you.

This information could include technical inaccuracies or typographical errors. Changes are periodically made to the information herein; these changes will be incorporated in new editions of the publication. IBM may make improvements and/or changes in the product(s) and/or the program(s) described in this publication at any time without notice.

Any references in this information to non-IBM Web sites are provided for convenience only and do not in any manner serve as an endorsement of those Web sites. The materials at those Web sites are not part of the materials for this IBM product and use of those Web sites is at your own risk.

IBM may use or distribute any of the information you supply in any way it believes appropriate without incurring any obligation to you.

Licensees of this program who wish to have information about it for the purpose of enabling: (i) the exchange of information between independently created programs and other programs (including this one) and (ii) the mutual use of the information which has been exchanged, should contact:

IBM Corporation  
2Z4A/101  
11400 Burnet Road  
Austin, TX 78758 U.S.A.

Such information may be available, subject to appropriate terms and conditions, including in some cases payment of a fee.

The licensed program described in this document and all licensed material available for it are provided by IBM under terms of the IBM Customer Agreement, IBM International Program License Agreement or any equivalent agreement between us.

Any performance data contained herein was determined in a controlled environment. Therefore, the results obtained in other operating environments may vary significantly. Some measurements may have been made on development-level systems and there is no guarantee that these measurements will be the same on generally available systems. Furthermore, some measurement may have been estimated through extrapolation. Actual results may vary. Users of this document should verify the applicable data for their specific environment.

Information concerning non-IBM products was obtained from the suppliers of those products, their published announcements or other publicly available sources. IBM has not tested those products and cannot confirm the accuracy of performance, compatibility or any other claims related to non-IBM products. Questions on the capabilities of non-IBM products should be addressed to the suppliers of those products.

All statements regarding IBM's future direction or intent are subject to change or withdrawal without notice, and represent goals and objectives only.





Printed in USA