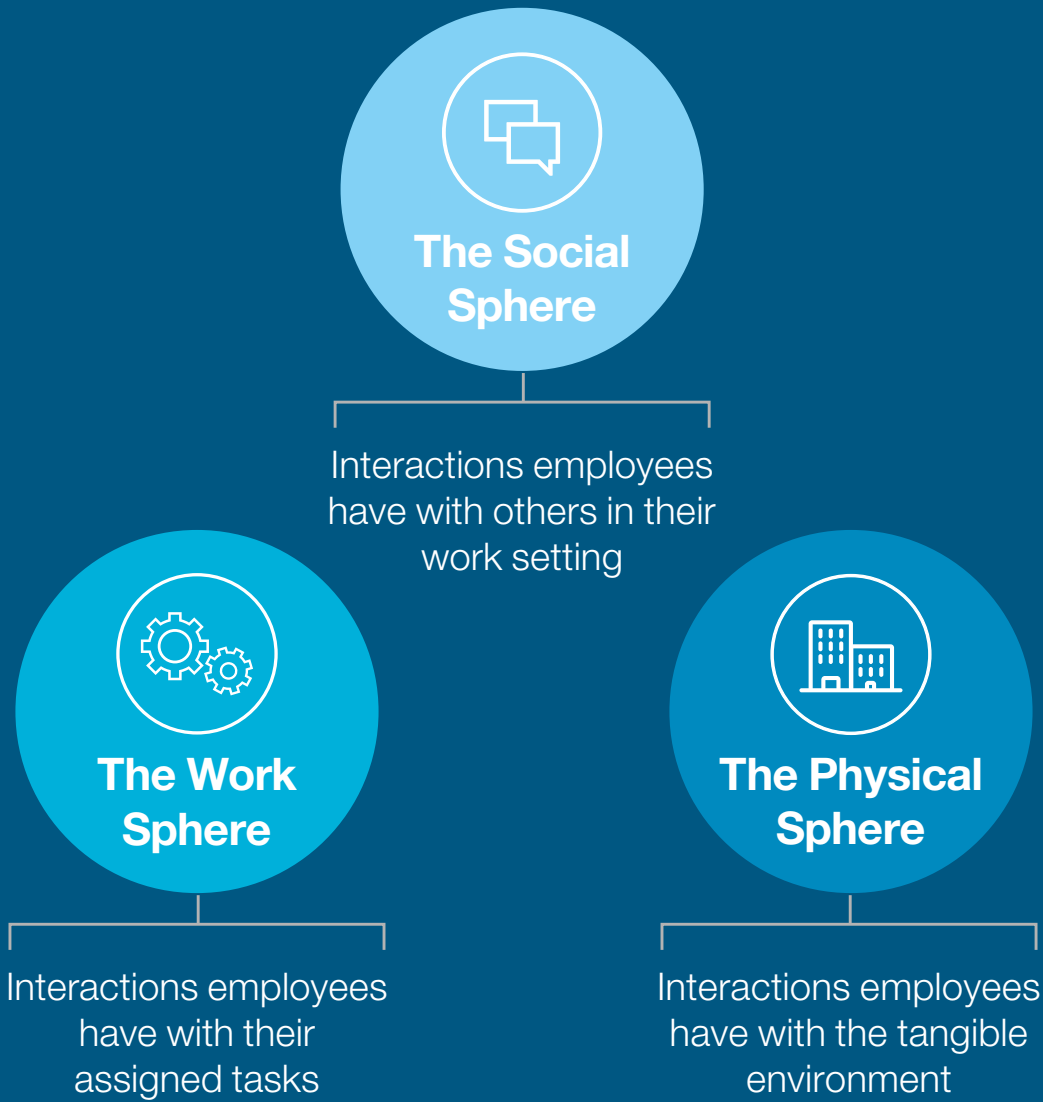


# Designing employee experience

Enhance engagement and productivity with a unified approach

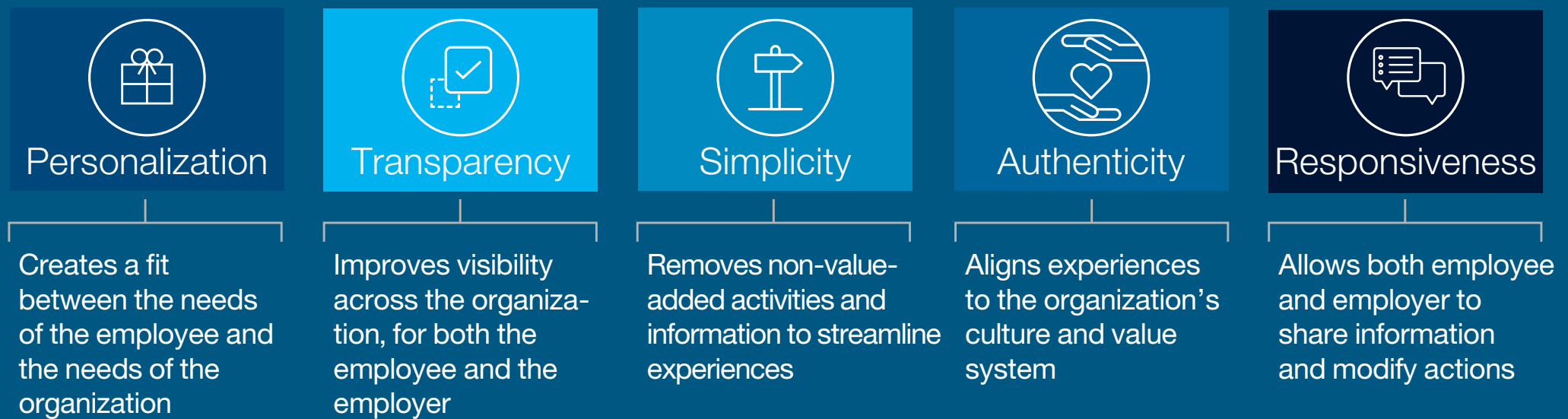
## 3 spheres of employee experience



## Spheres overlap to create unique facets of employee experience



## 5 strategies for improving employee experience



## Getting started in your organization

- 1** Tune in to the voice of the employee using analytics
- 2** Invest in key milestones where employee experience has a unique impact
- 3** Build an employee experience coalition that crosses traditional silos
- 4** Design employee experiences using rapid, iterative design principles

**Make the most of your employee experience:**  
[ibm.com/business/value/employee\\_experience](http://ibm.com/business/value/employee_experience)

**Find resources to build an engaged workforce:**  
[ibm.com/services/us/business-consulting/talent-change-management](http://ibm.com/services/us/business-consulting/talent-change-management)