

# IBM Supply Chain Intelligence Suite

Apply the power of AI and the speed of automation to improve supply chain resiliency

Improve supply chain resiliency and transparency while demonstrating meaningful progress against public sustainability commitments.

## Featured Highlights

### Common situational awareness

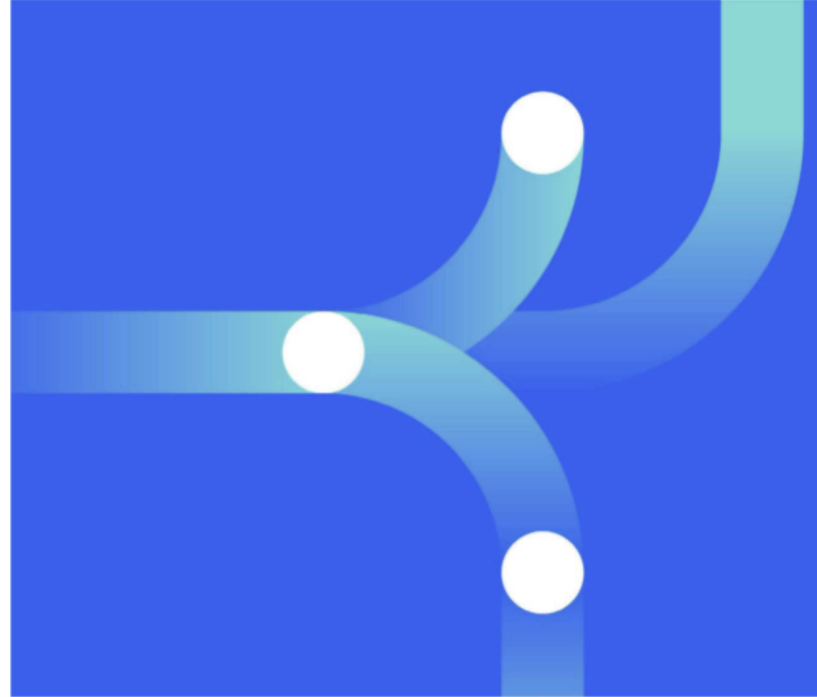
Share the same critical supply chain information across all operational functions and external supply chain participants with a unified view of supply chain data. Quickly explore information across your extended supply chain and understand business health using configurable dashboards.

### Actionable workflows

Refine, improve or reinvent supply chain process flows. Identify, prioritize and resolve issues faster using business rules, work queues, and workflows. Assign tasks across teams or use automation to streamline and scale decision making across the organization.

### Transparency

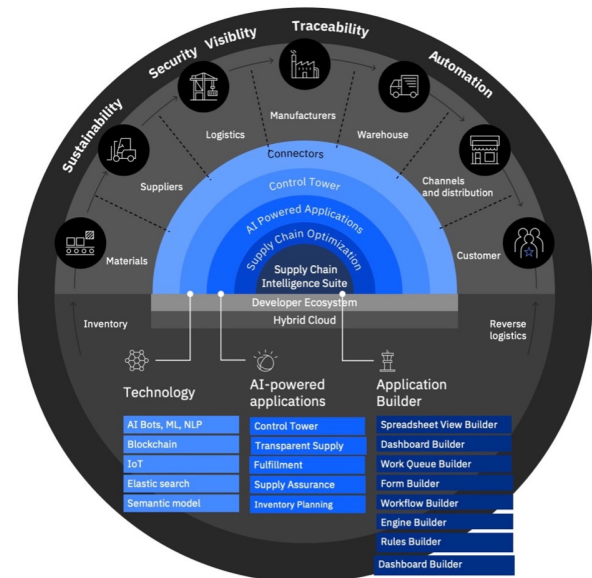
Provide goods-specific transparency across multiple supply chain partners, enabling analytics by company, location, product movement and condition. Meet regulatory and compliance requirements becoming more prevalent in industries such as Food, Apparel, Beauty and Pharma. Increase trust by connecting end consumers with permissioned data about a product's origin or standard of quality during production via QR codes and a mobile app.



### Operationalize sustainability goals

Turn sustainability ambition into action and achieve net zero goals by compiling supplier data to drive Scope 3 accuracy, improve circularity by reducing waste and risk, and inform end consumers of carbon and other ESG impacts to increase brand trust.

## Propel your digital supply chain transformation



IBM's smarter supply chain can help you respond today and prepare for the future, delivering better business outcomes



## Suite common services

**Data Explorer:** Access, search, filter and share cross - functional data.

**Dashboards:** Configurable dashboards aligned with supply chain data objects such as inventory, suppliers, shipments.

**Work Queues:** Prioritized list of issues that can be assigned to users to act on and track to resolution.

**Builders:** Create and configure dashboards, cards, work queues, resolutions, research topics, rules, and criteria

## Suite applications

### IBM Supply Chain Control Tower

This next generation supply chain control tower helps you identify and resolve critical supply chain issues faster with end-to-end visibility, advanced analytics, and actionable workflows. By leveraging the power of open platforms, AI, automation, and customized workflows, you are better able to predict, plan for and respond to today's complex supply chain operational challenges.

### IBM Blockchain Transparent Supply

Supply chain transparency enables companies to know what is happening both upstream and downstream in the supply chain and to take action on this knowledge both internally and externally. The IBM Transparent Supply application provides a blockchain platform that enables companies to join or build their own data-sharing ecosystem with trusted supply chain partners.

### IBM MRO Inventory Optimization

MRO Inventory Optimization is an award-winning application, designed for the unique challenges of optimizing inventory in MRO asset-intensive industries, including oil and gas, mining, transportation, utilities, and process manufacturing. MRO Inventory Optimization combines statistical analyses, prescriptive analytics, and optimization algorithms to provide an accurate and detailed picture of MRO inventory performance. It offers powerful analytical capabilities to help organizations make informed decisions that balance cost and risk.

## Use cases

- **Inventory exception management** - Detect out-of-stock and proactively take action to avoid fulfillment delays
- **Manage outbound logistics** - Detect and respond faster to shipment delays to mitigate customer impact
- **Manage product recalls** - Trace and communicate product history more effectively to control impact
- **Eliminate inventory spoilage** - Monitor and alert on inventory age in real-time to maintain inventory freshness
- **Protect brand reputation** - Track product authenticity and quality from origin to consumption to preserve brand equity
- **Reduce supplier risk** - Manage compliance by tracking agreements, contracts, policies, and credentials to reduce exposure from third parties
- **Manage inbound supply disruptions** - Detect upcoming delays in supply shipments due to weather and other risk events, to minimize line outages, manufacturing delays, and lost revenue.
- **Drive Scope 3 accuracy** - Inform ESG systems with comprehensive supplier data. Act on supplier ESG initiatives with operational dashboards.

Hear from IBM experts and see the IBM Supply Chain Intelligence Suite in action with product demos highlighting key use cases.

[Schedule a Consult →](#)

