



IBM Maximo Application Suite

Highlights:

- Extend the life expectancy of a high value asset through AI-based predictive maintenance - therefore eliminating the carbon footprint and associated GHG Scope 3 emissions from not having to build and fit a replacement asset.
- Modernize to IBM Maximo Application Suite to unleash AI capabilities to accurately predict and avoid asset failure.
- IBM Technology Expert Labs has extensive experience in advancing clients of all sizes across industries toward their condition-sustainability goals.
- Maximo service offerings provide a modular approach, within a trusted structured framework. Each element is designed to be consumable, with a constant eye on the modernization end goal.

Accelerate your sustainability journey with IBM Technology Expert Labs

What if you could extend the life expectancy of high value assets through AI-based predictive maintenance?

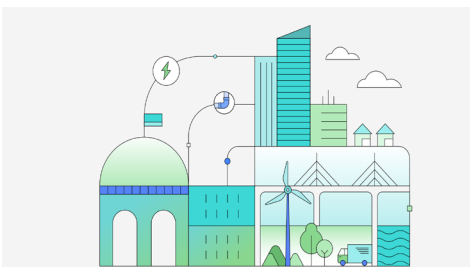
What if you could monitor, manage, and maintain operations in ways that encourage sustainability across the asset lifecycle? With IBM® Maximo®, an integrated asset and reliability management platform, you can:

- Extend asset life through predictive maintenance and asset health capabilities
- Reduce waste by extending asset lifecycles and reducing inventories
- Enable energy efficiency by optimizing asset and resource performance
- Reach carbon footprint goals with monitoring and measurement at an asset level

IBM Technology Expert Labs is an extension of IBM Sustainability Software Labs. IBM Technology Expert Labs is a professional services team with a deep product knowledge of Maximo Application Suite and has proven methodologies to modernize your existing IBM Maximo environment in readiness for embarking on your sustainability journey.

Why modernize?

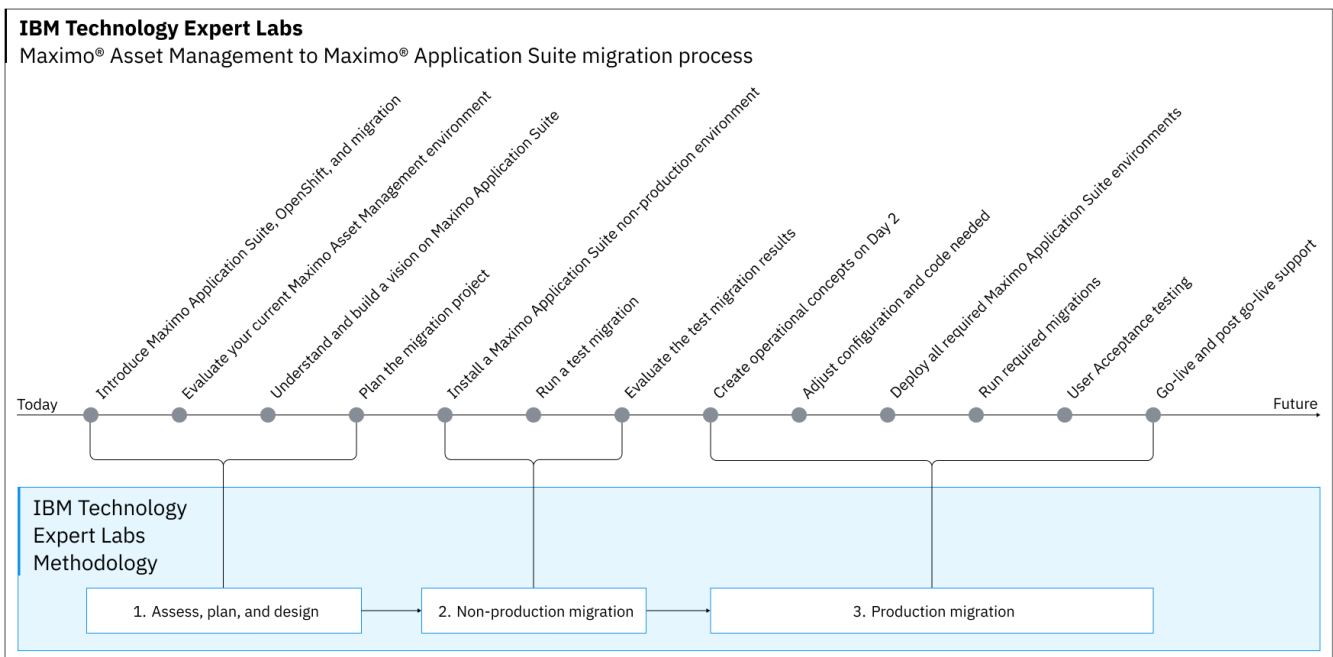
Organizations have many reasons to modernize their Maximo solution. These include environmental and maintenance legislation, equipment needs, reduction in energy costs, and attainment of carbon footprint goals.



How to modernize

For clients who are considering Maximo Application Suite, Expert Labs is the insurance policy that ensures you can capitalize on the full value of your investment. Expert Labs can help you save time and money on implementation and training in-house resources by bringing in a team of highly experienced experts to create a seamless modernization journey.

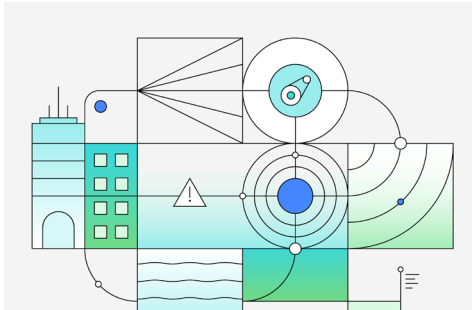
The Maximo Application Suite Modernization Service offerings with Expert Labs provide a modular services approach that occurs within a trusted structured framework. Each element is consumable, with a constant eye on the end goal.



Expert Labs follows 3 steps to implement the modernization process:

1. **Assess, plan and design:** This step provides a deep-dive technical review, a detailed design of the future environment and a deployment project plan with actionable recommendations.
2. **Pilot migration:** This step moves existing the existing Maximo solution along with existing client data to a new, non-production Maximo Application Suite instance and validates key solution components.
3. **Main migration:** This step provides a full-scale rollout and post go-live assistance.

IBM Technology Expert Labs Solution Brief



During the modernization process, Expert Labs provides:

- A comprehensive assessment
- An architecture and design of the to-be environment
- Expertise on Red Hat® OpenShift®
- 360-degree view of your solution.
- Risk mitigation recommendations
- Ability to work with existing Business Partners and implementation partners

IBM Technology Expert Labs has the experts to ensure your success. Accelerate your adoption today!

For more information

To learn more about IBM Technology Expert Labs, please contact your IBM representative or see www.ibm.com/products/expertlabs

Authors:

Simon Melia, WW Sustainability Delivery Leader, Asset Management, IBM Technology Expert Labs

Kiely Kuligowski, Sustainability Product Manager, IBM Technology Expert Labs



© Copyright IBM Corporation 2024

IBM Corporation
New Orchard Road
Armonk, NY 10504
U.S.A.

Produced in the United States of America
May 2024

IBM, the IBM logo, ibm.com, Maximo are trademarks of International Business Machines Corp., registered in many jurisdictions worldwide. Red Hat and OpenShift are registered trademarks of Red Hat, Inc. or its subsidiaries in the United States and other countries. Other product and service names might be trademarks of IBM or other companies. A current list of IBM trademarks is available on the Web at “Copyright and trademark information” at: ibm.com/legal/copytrade.shtml

This document is current as of the initial date of publication and may be changed by IBM at any time. Not all offerings are available in every country in which IBM operates.

THE INFORMATION IN THIS DOCUMENT IS PROVIDED “AS IS” WITHOUT ANY WARRANTY, EXPRESS OR IMPLIED, INCLUDING WITHOUT ANY WARRANTIES OF MERCHANTABILITY, FITNESS FOR A PARTICULAR PURPOSE AND ANY WARRANTY OR CONDITION OF NON-INFRINGEMENT.

IBM products are warranted according to the terms and conditions of the agreements under which they are provided.
