

# IBM Wazi as a Service

Cloud native development and testing for  
z/OS on IBM Cloud

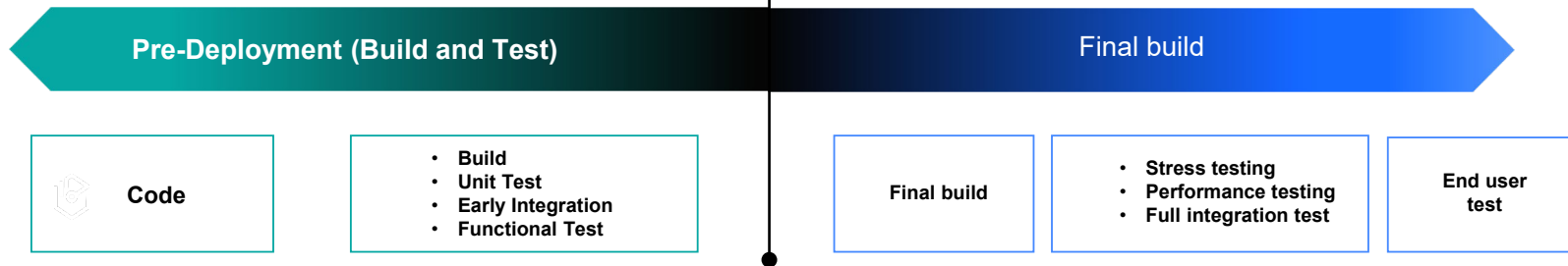
September 2022



# Wazi aaS – z/OS dev and test



IBM Cloud®



# 33%

of developers see a lack of skills or resource allocation inhibiting their productivity<sup>1</sup>

# 36%

of developers view a lack of collaboration between development and IT operations as inhibiting their productivity<sup>2</sup>

# 3rd

year in a row, a majority of Gitlab survey takers resoundingly pointed to testing as the area most likely to cause delays<sup>3</sup>

# Wazi aaS – Benefits

## Cloud-native development and test for z/OS® applications

Accelerate DevOps practices with flexible, consumption-based pricing



### Speed to Market

Accelerate development and testing with on-demand access to z/OS system

- **Eliminate wait times** involved in exclusive access to environments
- **Improved developer productivity** resulting in accelerated release cycle



### Improved Software Quality

Shift left and start testing as early as your code phase with access to isolated development environment

- Create your development environment with **automated deployment** of custom application
- Hybrid application development with **standard CI/CD pipeline**



### Flexible pricing

Infrastructure as a Service enabling access to z/OS system and pay for what you use

- **Pay for what you use** on hourly basis
- Additional discount based on period and usage



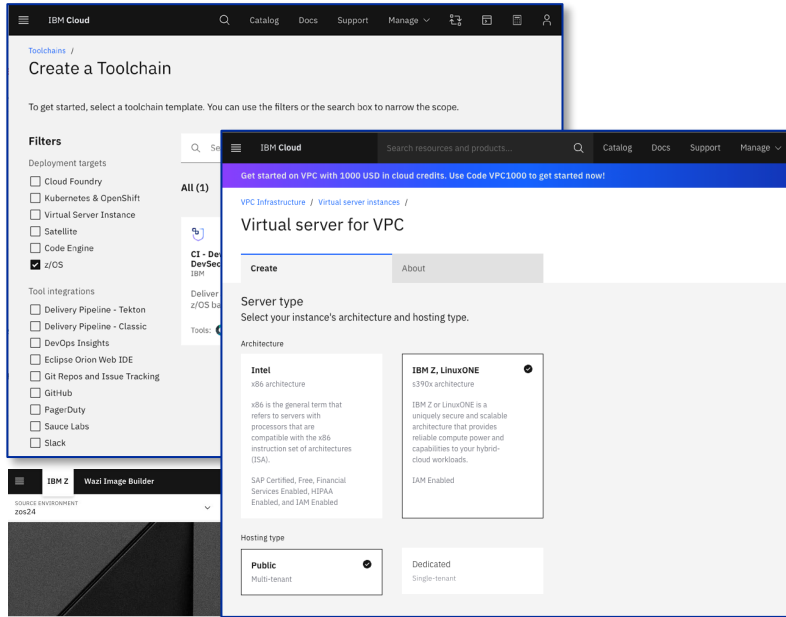
### Innovate with Freedom

Innovate at scale with Wazi z/OS Dev and Test system with pre-installed software's

- **Deploy a stock image** with preinstalled software's onto z/OS Virtual server
- Innovate at scale and **deploy with confidence**

# IBM Wazi aaS

## Cloud-native development and test for z/OS on IBM Cloud



### Wazi - z/OS Dev and Test system in your Virtual Private Cloud (VPC)

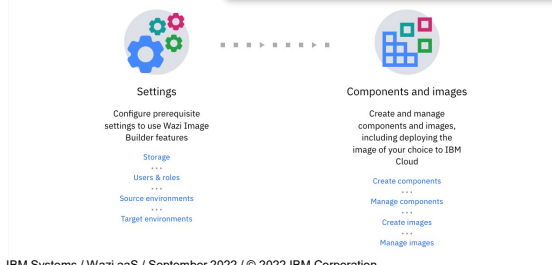
- Dedicated and Isolated environment reducing conflicts
- Stock image with pre-installed and customized software
- Manage virtual machine-based compute, storage and networking resources in a private, secure space you define
- Infrastructure as a Service with flexible consumption model

### Wazi Image Builder:

- Create custom images from your on-premises LPAR
- Web UI and REST APIs to automate the deploy to IBM Cloud

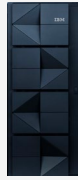
### Continuous Integration: (Experimental)

- Use z/OS templates that extend IBM Continuous Delivery Service to automate builds, tests, deployments and more, in secure DevSecOps toolchains.



## Key features

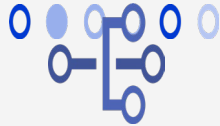
- Isolated and on-demand z/OS Dev and Test system
- IBM Cloud VPC
- Wazi Image Builder
- Common CI/CD Pipeline in a Hybrid Cloud environment



IBM Cloud

- On-demand z/OS Dev and Test System in IBM Cloud VPC
- Launch a z/OS Virtual server in just Minutes
- Choose between a stock Image or Bring your own Image

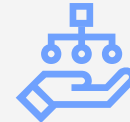
### IBM Cloud Virtual Private Cloud (VPC)



**A virtual network** on top of the cloud software-defined data center infrastructure



**Easy to use API for managing resources** across Availability Zones (also managed through Console and CLI)



Industry standard models for **Network Security Groups and Access Control Lists** to provide network security

## Highlights

**Rapid on-demand access to z/OS System**

**No Specialized z/OS skills required**

**Automation with Ansible or Terraform**

## Key features

- Isolated and on-demand z/OS Dev and Test system
- IBM Cloud VPC features
- Wazi Image Builder
- Common CI/CD Pipeline in a Hybrid Cloud environment

## IBM Cloud Virtual Private Cloud (VPC) features

### Network



#### VPN-as-a-Service

- Secure connection via an encrypted tunnel between customer and VPC or VPC to VPC
- Adheres to common protocol and encryption standards



#### Direct Link via Classic Access

- Private connectivity for maximum speed, security and resiliency
- Variety of connectivity options and port speeds from 50Mbps to 10 Gbps



#### Transit Gateway

- VPC to Classic
- VPC to VPC

### Compute



#### Virtual Server Instances

- Profiles of pre-defined vCPU/RAM Configurations
- Basic monitoring and logging

#### Stock OS options – s390X:

- z/OS Dev and Test – *Stock Image*
- Custom Image – *BYO-Image*

### Block Storage

- Boot volumes are required to boot VSI's within a VPC
- Customers who need additional storage beyond a boot disk for VSI can attach additional storage to support their workloads

## Key features

– Isolated and on-demand z/OS Dev and Test system

– IBM Cloud VPC

– Wazi Image Builder

– Common CI/CD Pipeline in a Hybrid Cloud environment



- Create custom images from your on-prem LPAR using Wazi Image Builder
- Web UI with role-based access control and REST APIs.
- Web UI or REST APIs allows you to perform tasks including but not limited to:
  - ✓ Extract artifacts, to begin with as volumes from existing IBM Z<sup>®</sup> platforms to create components
  - ✓ Build an image from components



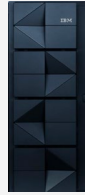
- Deploy the Image to IBM's Cloud Object Storage
- Automate deployment with Ansible and/or Terraform
- Added flexibility with the option of using your existing ZD&T image for deployment to IBM Cloud

## Highlights

Create a z/OS Virtual server with the custom Image of your application and related components in just minutes

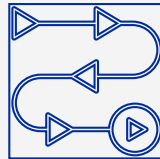
## Key features

- Isolated and on-demand z/OS Dev and Test system
- IBM Cloud VPC
- Wazi Image Builder
- Common CI/CD Pipeline for Hybrid Application development



Use your choice of DevOps solutions to integrate with your common CI/CD pipeline

- IBM Z And Cloud Modernization stack running on-prem or on Cloud in an OpenShift® environment
- IBM Wazi aaS with cloud-native capabilities available as a service in IBM public cloud



## Highlights

Flexibility to build a Custom and Hybrid CI/CD pipeline running on-prem and/or on Cloud

Automated deployment back to real IBM Z LPAR



Contact your IBM representative to participate in the Closed experimental of Wazi as a Service and realize the benefits of:

- Speed to Market
- Improved Software Quality
- Innovate with Freedom
- Flexible pricing



**Solution Web page:**

[Link](#)

Kirk Chadrick, Global Sales Executive, [ktchadri@us.ibm.com](mailto:ktchadri@us.ibm.com)

Eapen Valakuzhy  
Global IBM Public Cloud Sales  
[Eapen.Valakuzhy.Eapen@ibm.com](mailto:Eapen.Valakuzhy.Eapen@ibm.com)

**Maha Masri**  
Product Manager  
[masri@ca.ibm.com](mailto:masri@ca.ibm.com)

## Resource type

Announcement

[Link](#)

Technical Blog

[Link](#)

Quick technical demos

[Link](#)

## Resource type

Webinar - Getting started securing your z/OS app dev & test in IBM Cloud

[Link](#)

IBM documentation

[Link](#)

[Explore Z and Cloud Modernization Center](#)

## Join the community

IBM Cloud Native Developer Community

[Link](#)

# Thank You

© Copyright IBM Corporation 2022. All rights reserved. The information contained in these materials is provided for informational purposes only, and is provided AS IS without warranty of any kind, express or implied. Any statement of direction represents IBM's current intent, is subject to change or withdrawal, and represent only goals and objectives. IBM, the IBM logo, ibm.com, IBM Cloud, IBM Z and z/OS are trademarks of IBM Corp., registered in many jurisdictions worldwide. Other product and service names might be trademarks of IBM or other companies. A current list of IBM trademarks is available at [Copyright and trademark information](#).