

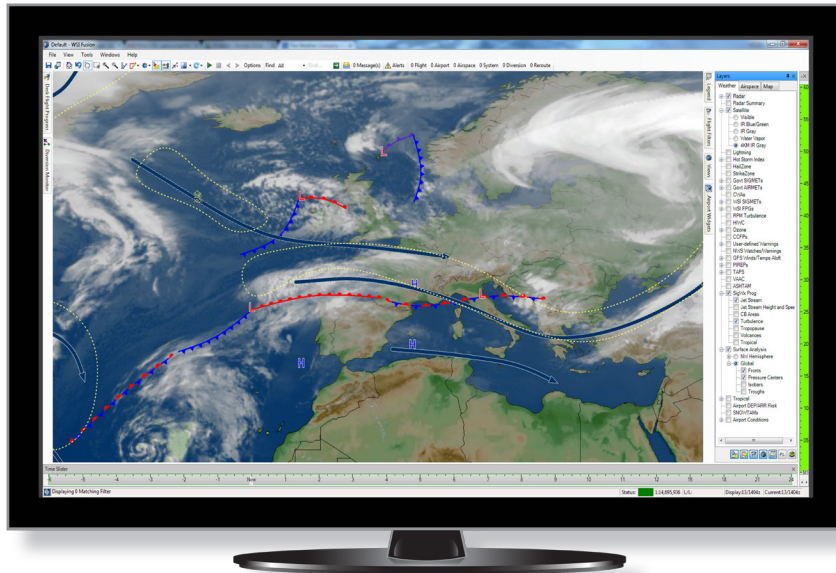
WSI Fusion

Global Flight Operations Management for Business Jet Operators



The Weather Company, an IBM business, delivers WSI Fusion, a proactive flight following solution that provides early insight into changing flight, airport, and airspace conditions enabling customers to carefully track aircraft, optimize operations, and mitigate the impacts of disruptive events. The Fusion platform provides streamlined access to information and alerts affecting specific flights as well as broader airspace situational awareness.

Predict and react to disruptions, enabling operations to get executives and VIPs to their destination comfortably, conveniently and safely.



**Predict and react
to disruptions,
enabling you to get
executives and
VIPs to their
destination
comfortably,
conveniently &
safely**

WSI Fusion's intelligent alerting engine continuously monitors conditions to identify and promptly notify operations personnel of potential problems that warrant attention and possible action. The ability to manage by exception and receive advance warning of potential problems significantly improves operational flexibility and safety.

WSI Fusion enables operators to quickly resolve problems and communicate relevant information to an aircraft's crew. Bringing together the relevant operational data into a single interface, which improves decision effectiveness and speed even in the most challenging conditions.

WSI Fusion is uniquely positioned to help dispatchers, operations personnel, and managers stay aware and ahead of changing conditions, mitigate the impact of disruptive events, and ultimately improve safety, situational awareness, fuel planning, productivity and operational performance.



Monitor Flight Progress With Global Flight Tracking

- Offers new FAA high-quality System Wide Information Management (SWIM) data feed for US and UK flight following.
- With new Global Surveillance The Weather Company now offers a new blended data source: WSI Blend + Surveillance.
- Incorporates EUROCONTROL Electronic Flight Data (EFD) for European flight watch.
- Projects flight position in areas where actual position reports may be unavailable.
- Provides airport surface tracking reports that include aircraft position and movement data. These reports enable operations teams to monitor taxi times, runway congestion and gate traffic. Data is only available for selected airports.

Ensure Safety Of Flight With Global Weather Content

- Displays operationally required content including winds aloft, temperatures, SIGMETs and AIRMETs for preflight analysis.
- Incorporates premium Enroute Hazards and terminal area forecast services issued by The Weather Company's Global Forecast Center.
- Depicts convective activity worldwide with real-time global lightning data* and SATrad for areas where radar may be lacking.
- Provides early insight into operational restrictions with proprietary Forecast precipitation.

Improve Operational Efficiency With Traffic Flow Management Tools

- Highlights operational irregularities such as route deviations and diversions.
- Features proprietary flow pattern recognition for early detection of airborne holding.
- Includes domestic and premium international NOTAMs for terminal and airspace restrictions.
- Provides pre-flight and enroute route analysis including FAA Reroute Advisories, Preferred Routes, CDRs, and oceanic tracks.
- Integrates graphical RAIM and route analysis to allow users to take advantage of advanced navigational procedures.
- Monitors FAA Temporary Flight Restrictions, Flow Constrained & Evaluation Areas, Airspace Flow Programs, and airport traffic management initiatives.
- Provides Predictive Airport Analytics for congestion, taxi times and runway configurations to allow operations to make informed, data-based decisions.

**WSI Fusion
is a Proactive
Flight-
Operations
Management
Solution**

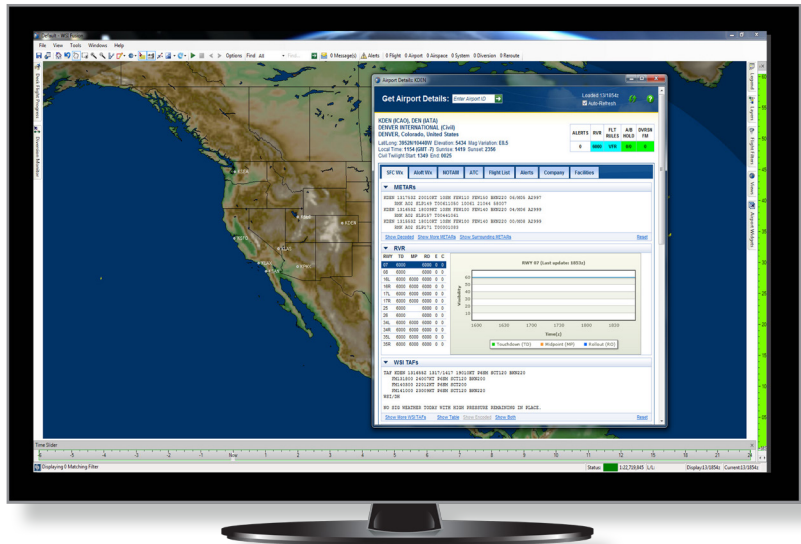
*Data is from Vaisala's National Lightning Detection Network and GLD360.

Proactively Manage Operations With Intelligent Alerting

- Provides graphical depiction of airport restrictions based on airport weather conditions.
- Detects terminal meteorological restrictions and traffic delays.
- Manages by exception by detecting route of flight hazard intersection.
- Focuses on dynamic constraints through user-defined warning areas.

Streamline Workflow To Maintain Situational Awareness

- Highly configurable, based on centrally stored user preferences.
- Allows users to manage and share settings such as alerting rules, flight filters, maps, and flight list views.
- Reduces complexity by offering a single mission critical source for global flight, weather, and airspace content.
- Offers enterprise integration with flight planning, flight scheduling and many other solutions.
- Promotes common situational awareness through common content used by air crew and airport operations.
- Relies on an Active / Active system architecture keeping primary and disaster recovery systems running concurrently.



The Weather Company
400 Minuteman Road
Andover, MA 01810
United States

Weather Services International, Limited
Edgbaston House
3 Duchess Place, Hagley Road
Birmingham, B16 8HN
United Kingdom

[Learn more](#)