



# Fight Compliance Drift and Accelerate Audit Readiness on IBM Z

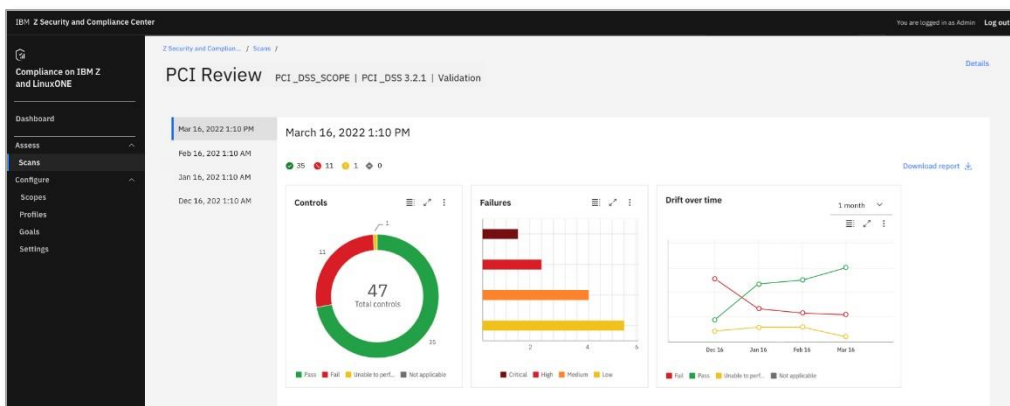
## Introducing the *IBM Z Security and Compliance Center*

Still spending months configuring your mainframe for compliance, weeks searching for compliance facts, and days explaining enterprise IT terminology to your auditors? Ready to strive for regulatory compliance of your IBM z/OS and Linux on Z ecosystems in an automated, vigilant, and time-saving fashion?

IBM Z Security and Compliance Center helps take the complexity out of your IBM Z compliance workflow and the ambiguity out of audits through automated fact collection and mapping to help you comply with security standards PCI DSS and NIST SP800-53.

### Highlights

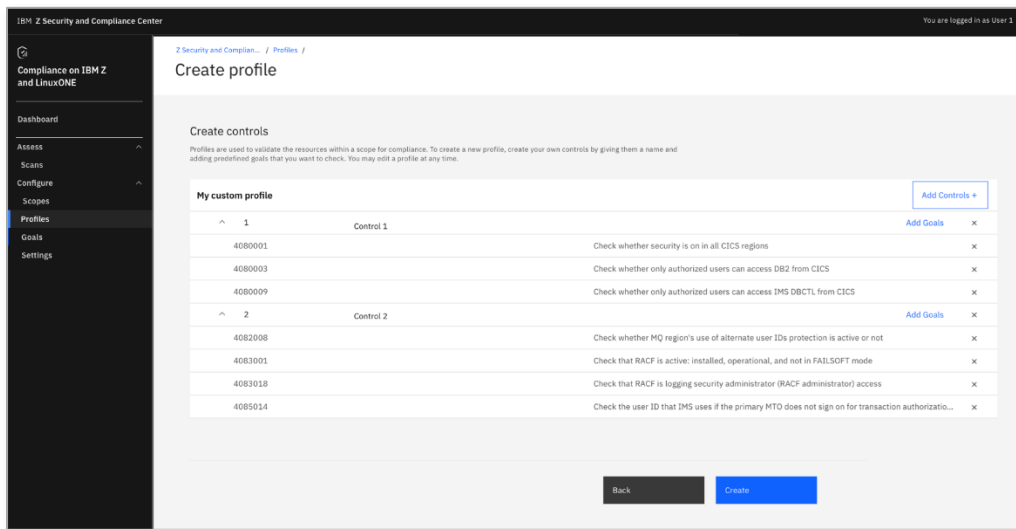
- Tracks compliance drift over time with dashboard style visualizations which display historical compliance scores
- IBM Z clients surveyed anticipate they can potentially reduce audit preparation timelines from one month to one week



The IBM Z Security and Compliance Center dashboard is simple and comprehensive



Whether you are a [security officer](#) ensuring an overall compliance posture, a [line-of-business owner](#) navigating the constant evolution of regulations and their remediation, an [engineer](#) gathering facts, or an [auditor](#) interpreting and validating the facts provided, you need an efficient, consistent way to collect, measure, report, and examine your compliance in a timely manner. Some of our IBM Z clients have reported that it can take dozens of IT professionals with specialized knowledge to help in a single audit.



Creating profiles in the IBM Z Security and Compliance Center

With both pre-defined and your custom regulatory profiles, IBM Z Security and Compliance Center provides a simple, flexible browser-based application for your compliance capability mapping, fact collection, and validation without a high level of expertise.

Getting started with the one-stop, web-based user interface is even easier if you've already implemented the [IBM Cloud Security and Compliance Center](#); they share a similar look and feel, mitigating ramp-up overhead.

We've tapped industry-specific professionals from auditing firms, our own Office of the CIO, and our Lab Services teams to review our capability mapping. Plus, we are publishing Z-specific Center for



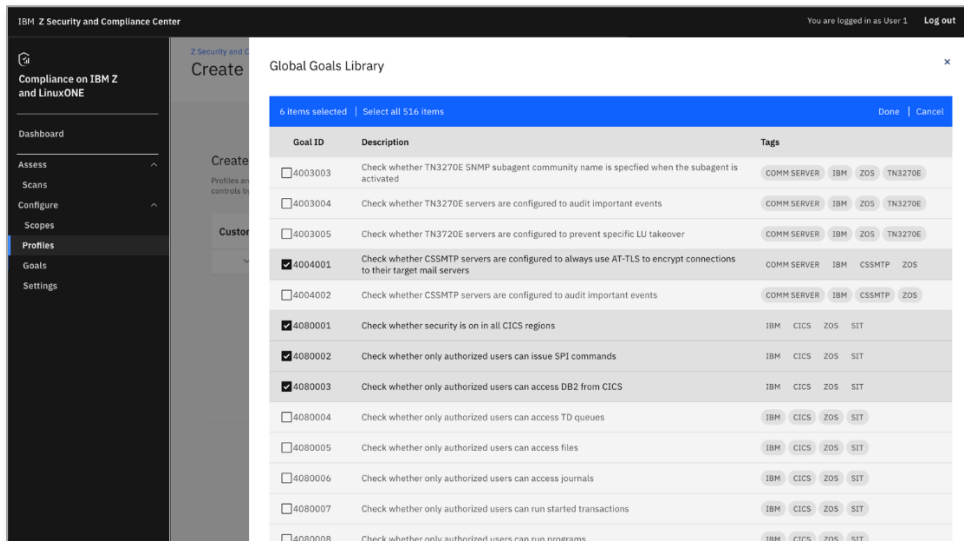
Internet Security (CIS) benchmarks to help you protect your z/OS, middleware, and Db2 infrastructure even better.

## For the security officer

The regulatory landscape is a slippery slope. As the security officer for your organization, you are under pressure to ensure the continuous compliance posture of your infrastructure, but the regulations are constantly changing. Your infrastructure is growing, and moving across many spectrums in platforms and operating systems; for example, How's your IBM Z expertise? Do you know the regulations for z/OS and Linux on Z?

From the mainframe perspective, we've designed the IBM Z Security and Compliance Center to help with:

- Translation of regulations to IBM Z-specific technical controls
- Centralized, interactive dashboard for a consolidated view of baseline standards for IBM Z environment
- System generated time-stamped evidence that can be used for compliance audits for a variety of industry regulations.



Choosing from goals library in the IBM Z Security and Compliance Center



## **For the line-of-business owner**

They are the life blood of your business: internal and external customers, and profitability. But navigating the constant evolution of industry security regulations and their remediation? Not so much.

Compliance is still a burden that you share with your technical and security colleagues. In fact, it's likely that the very agility you foster, the—build this, buy that, or partner for it—tactics that drive your business, put the lion's share of strain on your organization's continuous compliance.

What you need to be a good stakeholder citizen is help tracking how specific regulations affect the mainframe support your line of business requires, today and in the future.

We've designed the IBM Z Security and Compliance Center to help with:

- Understanding of how your new or changing business requirements could affect regulation compliance
- Clear, jargon-less mapping to the regulations that control your business' infrastructure
- Centralized, interactive dashboard for a consolidated view of baseline standards for IBM Z environment and to help identify drift from those standards.

## **For the engineer**

It's a giant technical scavenger hunt, staying up-to-date with the latest regulatory developments and gathering compliance evidence for reporting. You must demonstrate how your mainframe capabilities meet or exceed existing industry security controls. You may have to configure technical controls to meet compliance requirements. Plus, during the review process, you may be interviewed by the auditors

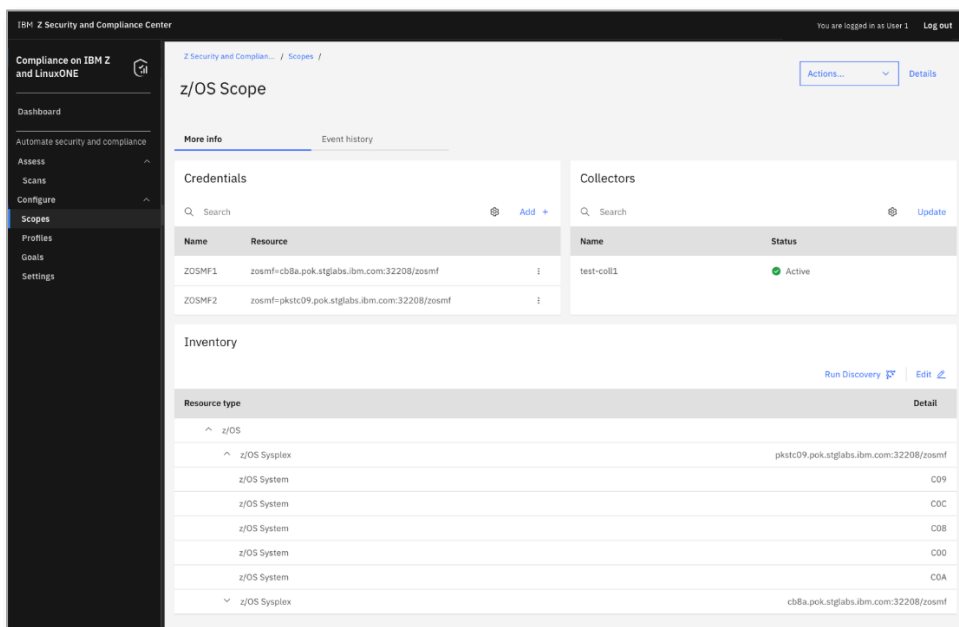


who are responsible for remediation to ensure complete understanding and agreement.

Add these responsibilities to the fact that: (A) you must understand how standards and regulations, written for distributed environments, apply to IBM Z; (B) auditors are human—they interpret regulations differently, focusing more heavily on different facets of the environment; and (C) your scavenger hunt can be terribly time consuming.

We've designed the IBM Z Security and Compliance Center to help with:

- Clear mappings of security regulations and the appropriate Z capabilities
- Clarity regarding how different regulations overlap or differ when it comes to security controls
- Ways to expedite (automate) the data-gathering process to save time.



Establishing scope for your PCI DSS audits in the IBM Z a



## For the auditor

Validation is your binary focus: Do the collected facts indicate compliance or not? But it's not easy. You may have to do this for a completely different organization every week. You must get in, identify key players, and evidence providers, review multiple audit findings to assess compliance, and even months after the audit is complete, implement a remediation plan.

Plus, the regulations can be broad and complex, and written in legal language without translation. You may not be familiar with IBM Z. And the facts that you're dealing with are often from one point-in-time, which doesn't help combat compliance drift.

We've designed the IBM Z Security and Compliance Center to help with:

- Capability to quickly gather evidence that is trustworthy (time-stamped, and from a clear source)
- Tracking an environment's compliance posture with a tool that "runs silently" collecting and archiving evidence over time

## Compliance drift...not worth the risk

Performance measurement specialist and author, [Stacey Barr](#), writes "...compliance is important to reduce or limit the risks that an organization is exposed to, like fines, lawsuits, and work stoppages. Fundamentally, compliance is about meeting the basic promises and expectations of all stakeholders in the organization."

IBM Z supports billions of business transactions per day. Attempting to maintain your mainframe compliance in an antiquated, periodic, labor-intensive fashion is not worth the risk.

Let's fight mainframe "compliance drift" together!



## Why IBM?

IBM Security offers one of the most advanced and integrated portfolios of enterprise security products and services. The portfolio, supported by world-renowned IBM X-Force® research, provides security solutions to help organizations drive security into the fabric of their business so they can thrive in the face of uncertainty.

IBM operates one of the broadest and deepest security research, development, and delivery organizations. Monitoring more than one trillion events per month in more than 130 countries, IBM holds over 3,000 security patents. To learn more, visit [ibm.com/security](http://ibm.com/security).

---

© Copyright IBM Corporation 2022.

IBM, the IBM logo, and [ibm.com](http://ibm.com) are trademarks of International Business Machines Corp., registered in many jurisdictions worldwide. Other product and service names might be trademarks of IBM or other companies. A current list of IBM trademarks is available on the Web at <https://www.ibm.com/legal/us/en/copytrade.shtml>, and select third party trademarks that might be referenced in this document is available at [https://www.ibm.com/legal/us/en/copytrade.shtml#section\\_4](https://www.ibm.com/legal/us/en/copytrade.shtml#section_4).

This document contains information pertaining to the following IBM products which are trademarks and/or registered trademarks of IBM Corporation:



All statements regarding IBM's future direction and intent are subject to change or withdrawal without notice and represent goals and objectives only.

## For more information

To learn more about IBM Z Security and Compliance Center, please contact your IBM representative or IBM Business Partner, or visit the following website:

[www.ibm.com/products/z-security-and-compliance-center](http://www.ibm.com/products/z-security-and-compliance-center)