



# SmartCloud Milestones

## 2013

IBM closes acquisition of [SoftLayer Technologies, Inc.](#)

Jul 8

IBM announces intent to acquire [SoftLayer Technologies, Inc.](#)

Jun 4

IBM launches its [Watson Engagement Advisor](#) as a cloud offering

May 21

IBM announces that all of its [cloud offerings will be open standards-based with OpenStack](#)

Mar 4

IBM creates one of the world's [largest private cloud](#) for analytics; from January to May, IBM announces more than 30 cloud wins worldwide and five strategic partnerships, including: [L'Oreal](#), [Itella](#) (Europe) and the [City of Bunbury](#) (Australia)

May

IBM [cloud revenue](#) up 70% percent

1Q

IBM [extends its managed cloud service](#) to 10 cloud centers on 5 continents

Jan 29

## 2012

IBM [cloud revenue](#) grows by 80 percent in 2012

Throughout 2012, IBM acquires [DemandTec](#), [Emptoris](#), [Varicent](#) and [Kenexa](#)

IBM launches an [AT&T joint offering](#) to deliver cloud services based on private networks

Oct 8

IBM launches its [PaaS](#)

Oct 1

IBM launches [Global Initiatives](#) to help MSPs; now more than 4,000 MSPs in IBM's ecosystem

Sep 26

IBM launches [SmartCloud Delivery for Electronics Industry](#)

Aug 3

IBM announces that [South Bend, IN](#) is the first city in the world to manage its water systems in the cloud

Jun 27

IBM launches [PureSystems](#) for expertly integrated clouds in a box

Apr 12

## 2011

IBM launches its [private cloud offerings](#) as a portfolio, [SmartCloud Foundations](#), and announces the availability of [IBM SmartCloud Enterprise+](#)

Oct 12

IBM Launches SmartCloud for [Disaster Recovery and Data Archive](#)

Jun 10

IBM and 45 organizations launch the [Cloud Standards Customer Council](#) for the open cloud, growing to 400 companies in 2013

Apr 7

IBM announces a US \$38M investment in a new [IBM Asia Pacific Cloud Computing Data Center](#)

Mar 7

## 2010

Cloud is named [one of IBM's four growth plays](#)

Throughout 2010, IBM acquires [Cast Iron](#), [Coremetrics](#), [Sterling Commerce](#) and [Unica](#)

IBM announces largest enterprise cloud deployment in history with [Panasonic](#) win

Jan 14

IBM launches their [Academic Skills Cloud](#)

Feb

## 2009

IBM launches [Dev Test Cloud](#), the industry's first set of commercial cloud services for the enterprise

Jun 16

IBM establishes [Blue Cloud](#) labs around the world

Feb 10

## 2008

IBM offers its first [industry specific cloud services](#)

Nov 24

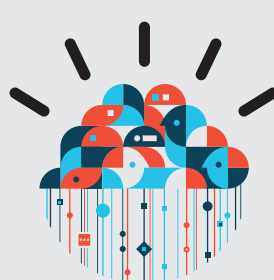
IBM invests nearly \$400 million on [cloud computing centers in the U.S. and Japan](#) and opens cloud centers in [Africa and China](#)

Aug 1

## 2007

IBM and Google create an [Academic Cloud](#)

Oct 8



[ibm.com/smartcloud](http://ibm.com/smartcloud)